

CORNER RECORD

Agency Index CR-22-035

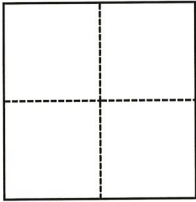
Document Number _____

City of Stockton County of San Joaquin, California

Brief Legal Description Found monument as noted, referenced and left as found.

CORNER TYPE

COORDINATES (Optional)



- Government Corner
- Meander
- Rancho
- Control
- Property
- Other

N. _____ E. _____

Elevation _____

Units Metric U.S. Survey Foot

Horizontal Datum _____

Zone _____ Epoch Date _____

Vertical Datum _____

Complies with Public Resources Code §§8801-8819

Complies with Public Resources Code §§8890-8902

PLS Act Ref.: 8765(d) 8771 8773 Other:

Corner/Monument: Left as found Established Rebuilt Pre-Construction

Found and tagged Reestablished Referenced Post-Construction

Narrative of corner identified and monument as found, set, reset, replaced, or removed:

See sheet #2 for description(s):

Found a cut cross in the concrete sidewalk of the northeast return at the intersection of Miner Ave and El Dorado St. Set four (4) reference points, as noted on the reverse, outside of the construction limits.

SURVEYOR'S STATEMENT

This Corner Record was prepared by me or under my direction in conformance with

the Professional Land Surveyors' Act on January 31, 2022

Signed James N. Landrum P.L.S. or R.C.E. No. 5837



COUNTY SURVEYOR'S STATEMENT

This Corner Record was received February 1, 2022

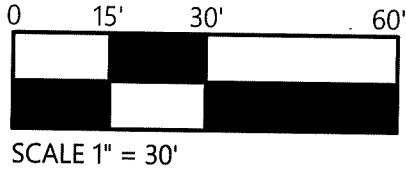
and examined and filed February 14, 2022

Signed James E. Hart P.L.S. or R.C.E. No. 8657

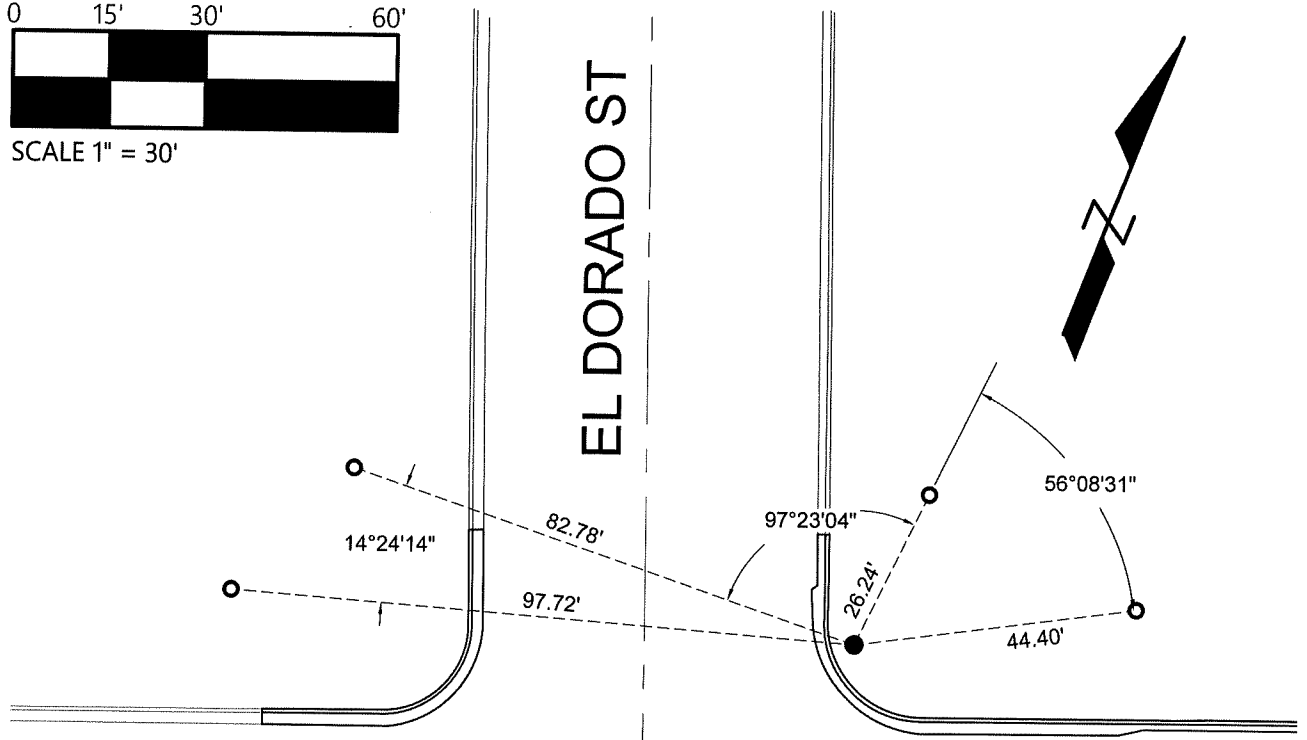
Title County Surveyor

County Surveyor's Comment

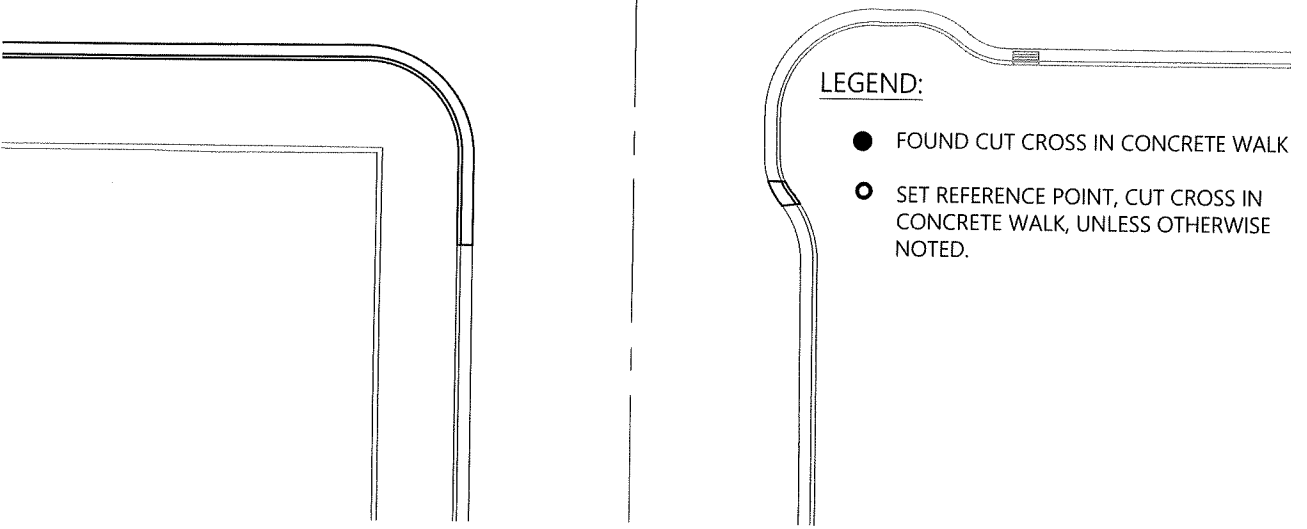




EL DORADO ST



MINER AVE



LEGEND:

- FOUND CUT CROSS IN CONCRETE WALK
- SET REFERENCE POINT, CUT CROSS IN CONCRETE WALK, UNLESS OTHERWISE NOTED.