

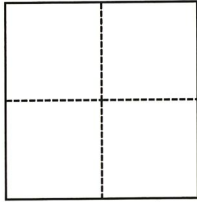
CORNER RECORD

Agency Index CR-22-034
Document Number _____

City of Stockton County of San Joaquin, California
Brief Legal Description Found monument as noted, referenced and left as found.

CORNER TYPE

COORDINATES (Optional)



- Government Corner
- Meander
- Rancho
- Control
- Property
- Other

N. _____ E. _____
 Elevation _____
 Units Metric U.S. Survey Foot
 Horizontal Datum _____
 Zone _____ Epoch Date _____
 Vertical Datum _____
 Complies with Public Resources Code §§8801-8819
 Complies with Public Resources Code §§8890-8902

Date of Survey September 12, 2020

- PLS Act Ref.: 8765(d) 8771 8773 Other:
- Corner/Monument: Left as found Established Rebuilt Pre-Construction
 Found and tagged Reestablished Referenced Post-Construction

Narrative of corner identified and monument as found, set, reset, replaced, or removed:
 See sheet #2 for description(s):

Found a cut cross in the concrete sidewalk of the northwest return at the intersection of Miner Ave and El Dorado St. Set four (4) reference points, as noted on the reverse, outside of the construction limits.

SURVEYOR'S STATEMENT

This Corner Record was prepared by me or under my direction in conformance with
 the Professional Land Surveyors' Act on January 31, 2022
 Signed [Signature] P.L.S. or R.C.E. No. 5837

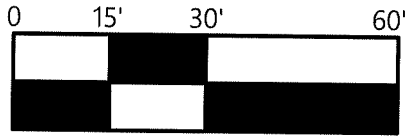


COUNTY SURVEYOR'S STATEMENT

This Corner Record was received February 1, 2022
 and examined and filed February 14, 2022
 Signed [Signature] P.L.S. or R.C.E. No. 8657
 Title County Surveyor

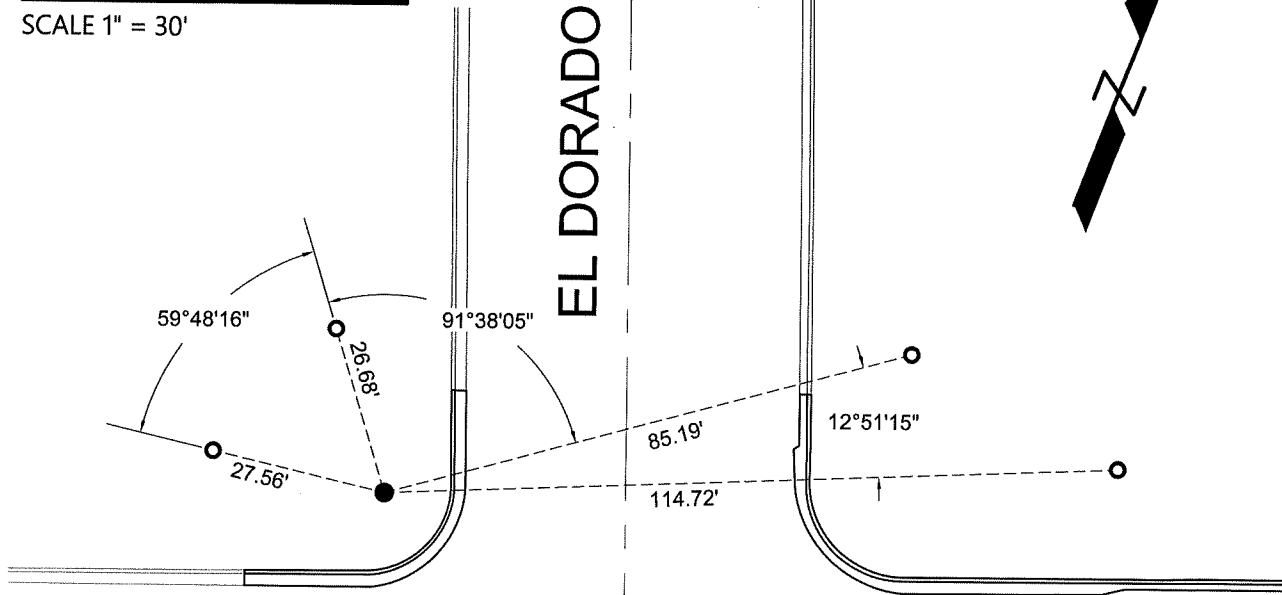


County Surveyor's Comment



SCALE 1" = 30'

EL DORADO ST



MINER AVE

LEGEND:

- FOUND CUT CROSS IN CONCRETE WALK
- SET REFERENCE POINT, CUT CROSS IN CONCRETE WALK, UNLESS OTHERWISE NOTED.