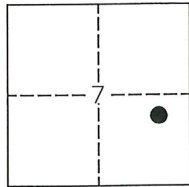


CORNER RECORD

Agency Index: CR-22-028
 Document Number: _____
 County of SAN JOAQUIN, California

City of STOCKTON
 Brief Legal Description MONUMENT ON KIMBROUGH COURT



T.2N, R.6E

CORNER TYPE

- Government Corner Control
 Meander Property
 Rancho Other

Date of Survey 01-03-2022

COORDINATES (Optional)

N. _____ E. _____
 Elevation _____
 Units Metric U.S. Survey Foot
 Horizontal Datum _____
 Zone _____ Epoch Date _____
 Vertical Datum _____
 Complies with Public Resources Code SS8801-8819
 Complies with Public Resources Code SS8890-8902

PLS Act Ref: 8765(d) 8771 8773 Other:
 Corner/
 Monument: Left as found Established Rebuilt Pre-Construction
 Found and Tagged Reestablished Referenced Post-Construction

Narrative of corner identified and monument as found, set, reset, replaced, or removed:

See sheet #2 for description(s):

FOUND ONE (1) MAG NAIL WITH BRASS WASHER STAMPED "L.S. 6953" ON KIMBROUGH COURT; FOUND TWO
(2) 5/8" REBARS IN MONUMENT WELLS ALONG THE CENTERLINE OF KIMBROUGH COURT, ALL AS SHOWN
ON CORNER RECORD NO. 21-228 S.J.C.S.R. SET ONE (1) CONCRETE NAIL WITH BRASS TAG "L.S. 6953",
ALL AS SHOWN ON PAGE 2.

SURVEYOR'S STATEMENT

This Corner Record was prepared by me or under my direction in conformance with the Land Surveyors' Act on JANUARY 14, 2022,



Signed [Signature] P.L.S. or R.C.E. Number 6953

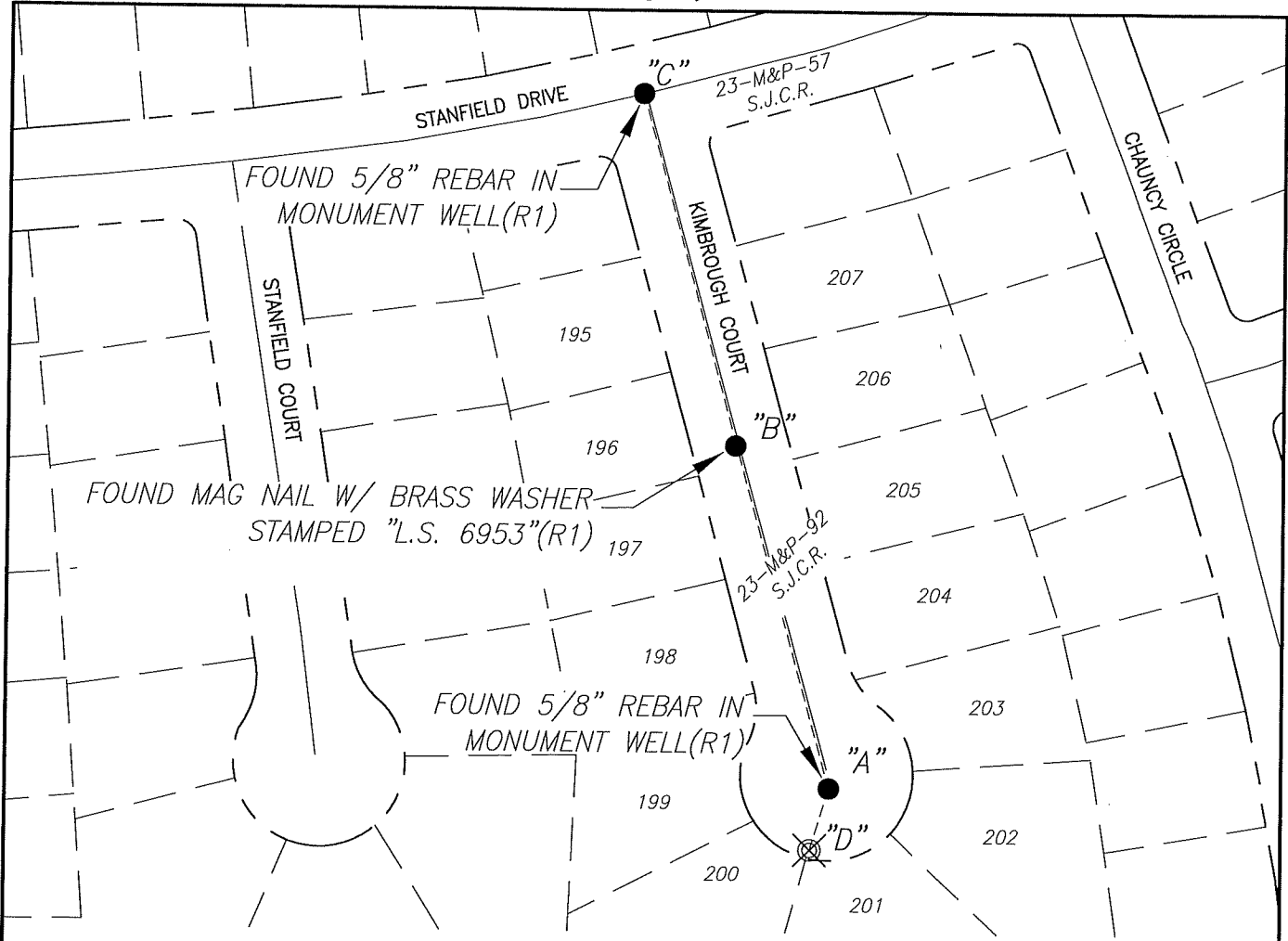
COUNTY SURVEYOR'S STATEMENT

This Corner Record was received January 20, 2022 and examined and filed February 7, 2022

Signed James E. Hart P.L.S. or R.C.E. No. 8657
 Title County Surveyor



County Surveyor's Comment _____





| X AND DISTANCE TABLE | | |
|----------------------|------------|----------------|
| BS-@-FS | X | FS DISTANCE |
| C-A-B | 00°00'00" | 208.24'(M)(R1) |
| C-A-C | 00°00'00" | 413.19'(M)(R1) |
| C-A-D | 212°24'40" | 42.00'(M)(R1) |



NOT TO SCALE

LEGEND:

-  SET CONCRETE NAIL WITH BRASS TAG "L.S. 6953"
-  FOUND MONUMENT AS NOTED
- S.J.C.S.R. SAN JOAQUIN COUNTY SURVEYOR'S RECORDS
- C.R. CORNER RECORD
- (M) MEASURED DISTANCE. ALL DISTANCES ARE MEASURED UNLESS NOTED OTHERWISE.

REFERENCE:

(R1) C.R. 21-228, S.J.C.S.R.