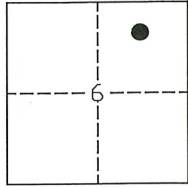


CORNER RECORD

Agency Index: CR-22-027
Document Number: _____
County of SAN JOAQUIN, California

City of STOCKTON
Brief Legal Description MONUMENT ON ALPINE AVENUE



CAMPO DE
LOS FRANCESES

CORNER TYPE

- Government Corner
- Meander
- Rancho
- Control
- Property
- Other

Date of Survey 01-03-2022

COORDINATES (Optional)

N. _____ E. _____
 Elevation _____
 Units Metric U.S. Survey Foot
 Horizontal Datum _____
 Zone _____ Epoch Date _____
 Vertical Datum _____
 Complies with Public Resources Code SS8801-8819
 Complies with Public Resources Code SS8890-8902

PLS Act Ref: 8765(d) 8771 8773 Other:

Corner/
Monument: Left as found Established Rebuilt Pre-Construction
 Found and Tagged Reestablished Referenced Post-Construction

Narrative of corner identified and monument as found, set, reset, replaced, or removed:

See sheet #2 for description(s):

FOUND THREE (3) CONCRETE NAILS WITH BRASS TAG "L.S. 6953" ON THE SOUTH SIDE OF ALPINE AVENUE
AS SHOWN ON CORNER RECORD NO. 21-233, S.J.C.S.R. SET ONE (1) CONCRETE NAIL WITH BRASS TAG
"L.S. 6953" ON THE SOUTH SIDE OF ALPINE AVENUE, ALL AS SHOWN ON PAGE 2.

SURVEYOR'S STATEMENT

This Corner Record was prepared by me or under my direction in conformance with the Land Surveyors' Act on JANUARY 11, 2022,



Signed [Signature] P.L.S. or R.C.E. Number 6953

COUNTY SURVEYOR'S STATEMENT

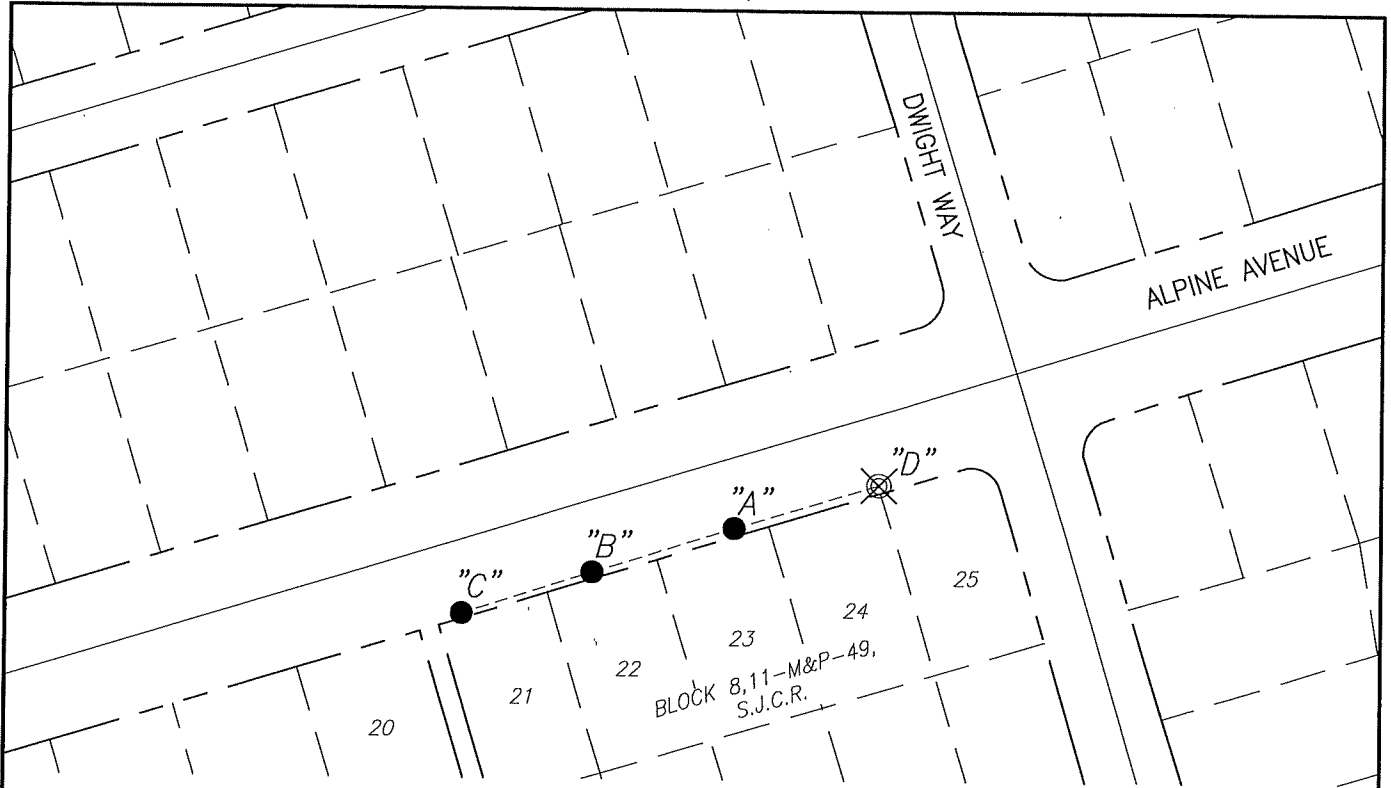
This Corner Record was received January 20, 2022
and examined and filed February 7, 2022

Signed James E. Hart P.L.S. or R.C.E. No: 8657

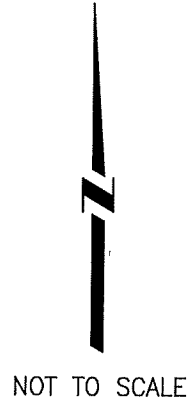
Title County Surveyor



County Surveyor's Comment _____



∠ AND DISTANCE TABLE		
BS-@-FS	∠	FS DISTANCE
C-A-B	00°00'00"	80.68'(M)(R1)
C-A-C	00°00'00"	156.34'(M)(R1)
C-A-D	180°26'38"	81.64'(M)(R1)



LEGEND:

- ⊗ SET CONCRETE NAIL WITH BRASS TAG "L.S. 6953"
- FOUND CONCRETE NAIL WITH BRASS TAG "L.S. 6953"(R1)
- S.J.C.S.R. SAN JOAQUIN COUNTY SURVEYOR'S RECORDS
- C.R. CORNER RECORD
- (M) MEASURED DISTANCE. ALL DISTANCES ARE MEASURED UNLESS NOTED OTHERWISE.

REFERENCE:

(R1) C.R. 21-233, S.J.C.S.R.