

CORNER RECORD

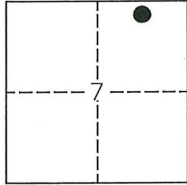
Agency Index: CR-22-026

Document Number: _____

City of STOCKTON

County of SAN JOAQUIN, California

Brief Legal Description MONUMENT ON TIMBERLANE DRIVE



T.2N, R.6E

CORNER TYPE

- Government Corner Control
 Meander Property
 Rancho Other

Date of Survey 01-03-2022

COORDINATES (Optional)

N. _____ E. _____

Elevation _____

Units Metric U.S. Survey Foot

Horizontal Datum _____

Zone _____ Epoch Date _____

Vertical Datum _____

Complies with Public Resources Code SS8801-8819

Complies with Public Resources Code SS8890-8902

PLS Act Ref: 8765(d) 8771 8773 Other:

Corner/
 Monument: Left as found Established Rebuilt Pre-Construction
 Found and Tagged Reestablished Referenced Post-Construction

Narrative of corner identified and monument as found, set, reset, replaced, or removed:

See sheet #2 for description(s):

FOUND ONE (1) CHISELED CROSS IN SIDEWALK ON THE SOUTH SIDE OF TIMBERLANE DRIVE; FOUND (3)
CONCRETE NAILS WITH BRASS TAG "L.S. 6953" ON THE NORTH SIDE OF TIMBERLANE DRIVE, ALL AS SHOWN
ON CORNER RECORD NO. 21-234, S.J.C.S.R. SET ONE (1) CONCRETE NAIL WITH BRASS TAG "6953" ON
THE SOUTH SIDE OF TIMBERLANE DRIVE, ALL AS SHOWN ON SHEET 2.

SURVEYOR'S STATEMENT

This Corner Record was prepared by me or under my direction in conformance with
 the Land Surveyors' Act on JANUARY 14, 2022,



Signed [Signature] P.L.S. or R.C.E. Number 6953

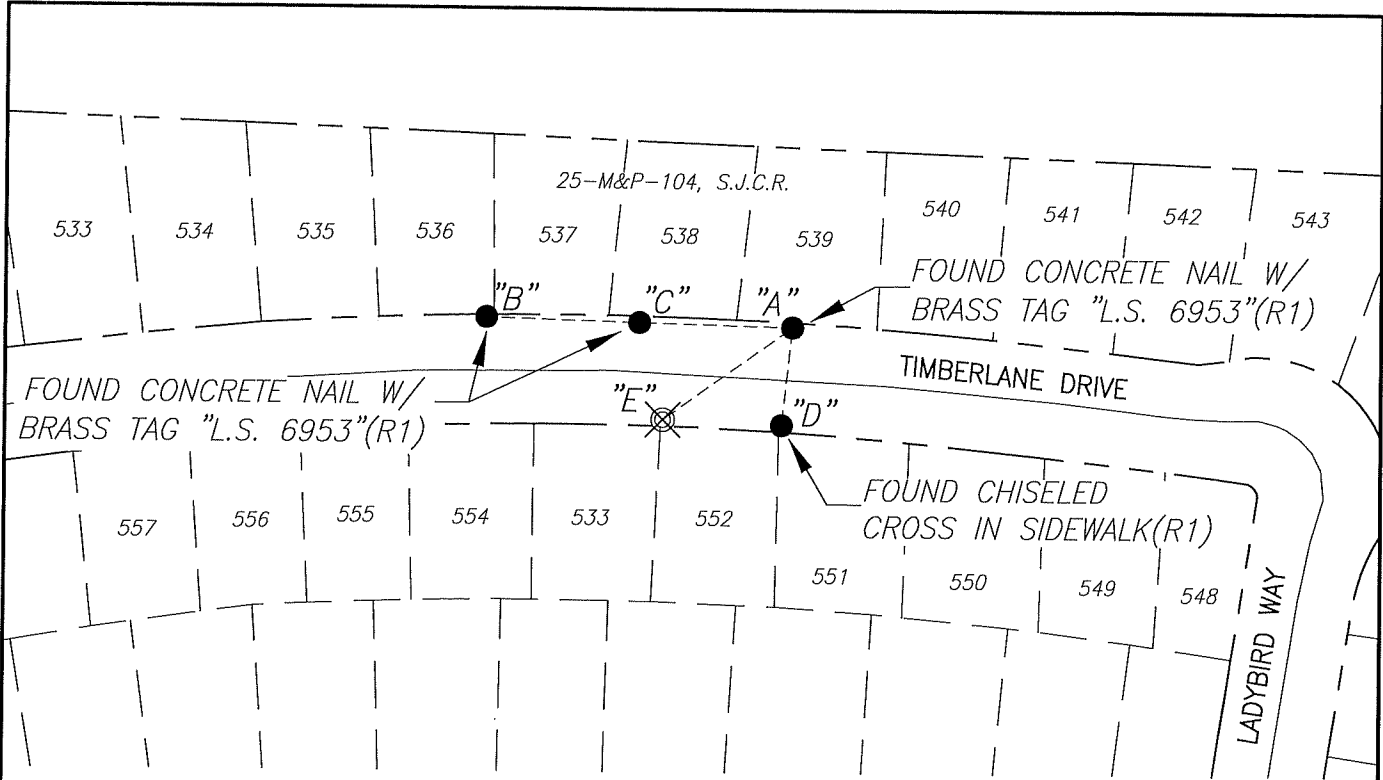
COUNTY SURVEYOR'S STATEMENT

This Corner Record was received January 20, 2022
 and examined and filed February 7, 2022

Signed James E. Hart P.L.S. or R.C.E. No: 8657
 Title County Surveyor



County Surveyor's Comment _____



X AND DISTANCE TABLE		
BS-@-FS	X	FS DISTANCE
B-A-B	00°00'00"	166.95'(M)(R1)
B-A-C	00°00'00"	83.58'(M)(R1)
B-A-D	276°42'48"	48.23'(M)(R1)
B-A-E	326°58'12"	86.64'(M)(R1)



NOT TO SCALE

LEGEND:

- ⊗ SET CONCRETE NAIL WITH BRASS TAG "L.S. 6953"
- FOUND MONUMENT AS NOTED
- S.J.C.S.R. SAN JOAQUIN COUNTY SURVEYOR'S RECORDS
- C.R. CORNER RECORD
- (M) MEASURED DISTANCE. ALL DISTANCES ARE MEASURED UNLESS NOTED OTHERWISE.

REFERENCE:

(R1) C.R. 21-234, S.J.C.S.R.