

CORNER RECORD

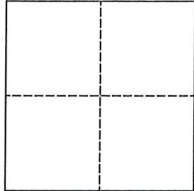
Agency Index CR-22-020

Document Number _____

City of _____ County of San Joaquin, California

Brief Legal Description Castle Road 2872± north of Northland Road

Within Sec. 16, T1S, R7E, Mount Diablo Base & Meridian



CORNER TYPE

- Government Corner Control
 Meander Property
 Rancho Other

Date of Survey October 07, 2021

COORDINATES (Optional)

N. _____ E. _____

Elevation. _____

Units Metric U.S. Survey Foot

Horizontal Datum _____

Zone _____ Epoch Date _____

Vertical Datum _____

Complies with Public Resources Code §§8801-8819

Complies with Public Resources Code §§8890-8902

PLS Act Ref.: 8765(d) 8771 8773 Other:

Corner/Monument: Left as found Established Rebuilt Pre-Construction

Found and tagged Reestablished Referenced Post-Construction

Narrative of corner identified and monument as found, set, reset, replaced, or removed:

See sheet #2 for description(s):

SURVEYOR'S STATEMENT

This Corner Record was prepared by me or under my direction in conformance with

the Professional Land Surveyor's Act on December 5, 2021

Signed James E. Hart P.L.S. or R.C.E. No. 8657



COUNTY SURVEYOR'S STATEMENT

This Corner Record was received December 16, 2021

and examined and filed December 30, 2021

Signed James E. Hart P.L.S. or R.C.E. No. 8657

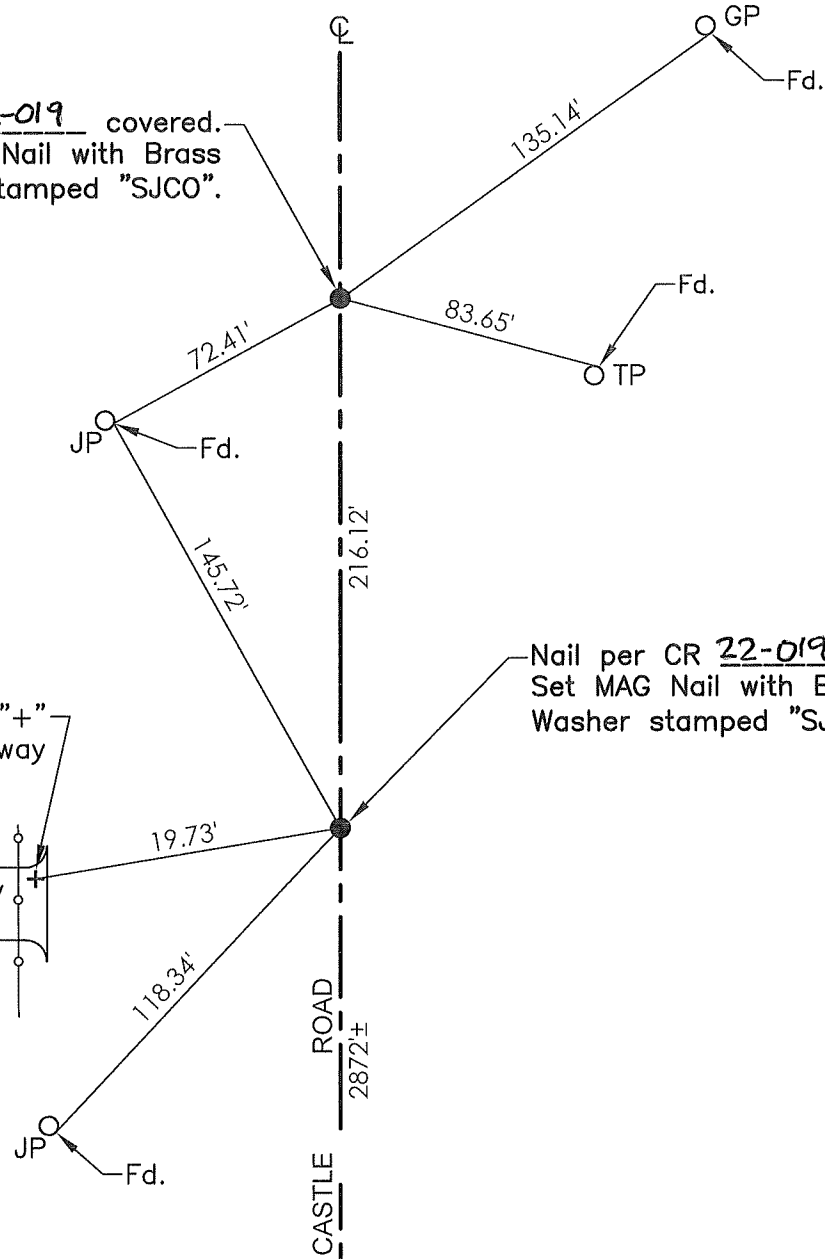
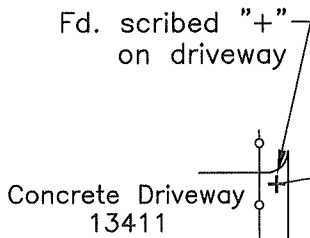
Title County Surveyor



County Surveyor's Comment



Nail per CR 22-019 covered.
Set MAG Nail with Brass
Washer stamped "SJCO".



Nail per CR 22-019 covered.
Set MAG Nail with Brass
Washer stamped "SJCO".

- TR=Tree
- MB=Mailbox
- BM=Bench Mark
- EP=Edge of Pavement
- YL=Yellow Line
- FH=Fire Hydrant
- CR=Corner Record
- FP=Fence Post
- JP=Joint Pole
- LP=Light Pole
- PP=Power Pole
- GP=Guy Pole
- SP=Service Pole
- TP=Telephone Pole
- S.F.N.=Searched Found Nothing
- N.T.S.=Not To Scale
- M&P=Maps & Plats
- PM=Parcel Map
- RS=Record of Survey
- FB=Field Book
- N=North
- SDI=Storm Drain Inlet
- TOC=Top of Curb
- PCC=Portland Cement Concrete

Set=Conc. Nail with Brass Washer stamped
"S.J. Co.", unless otherwise noted
Fd.=Found Conc. Nail with Brass Washer stamped
"S.J. Co.", unless otherwise noted
Note: Found Monuments are not tagged unless
otherwise noted.

"No attempt was made to verify the Monument(s)"