

CORNER RECORD

Agency Index

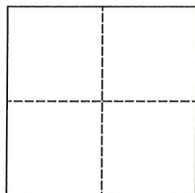
CR-22-018

Document Number

City of _____ County of San Joaquin, CaliforniaBrief Legal Description Castle Road 1515'± north of Northland RoadWithin Sec. 21, T1S, R7E, Mount Diablo Base & Meridian

CORNER TYPE

COORDINATES (Optional)

Government Corner ☐ Control ☐Meander ☐ Property ☐Rancho ☐ Other ☒

N. _____ E. _____

Elevation. _____

Units Metric ☐ U.S. Survey Foot ☒

Horizontal Datum _____

Zone _____ Epoch Date _____

Date of Survey October 07, 2021

Vertical Datum _____

☐ Complies with Public Resources Code §§8801-8819☐ Complies with Public Resources Code §§8890-8902

PLS Act Ref.:

☐ 8765(d)☒ 8771☐ 8773☐ Other:Corner/
Monument:☐ Left as found☐ Established☐ Rebuilt☐ Pre-Construction☐ Found and tagged☒ Reestablished☐ Referenced☒ Post-Construction

Narrative of corner identified and monument as found, set, reset, replaced, or removed:

☒ See sheet #2 for description(s):

SURVEYOR'S STATEMENT

This Corner Record was prepared by me or under my direction in conformance with

the Professional Land Surveyor's Act on December 5, 2021Signed James E. Hart P.L.S. or R.C.E. No. 8657

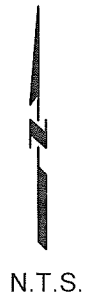
COUNTY SURVEYOR'S STATEMENT

This Corner Record was received December 16, 2021and examined and filed December 30, 2021Signed James E. Hart P.L.S. or R.C.E. No. 8657

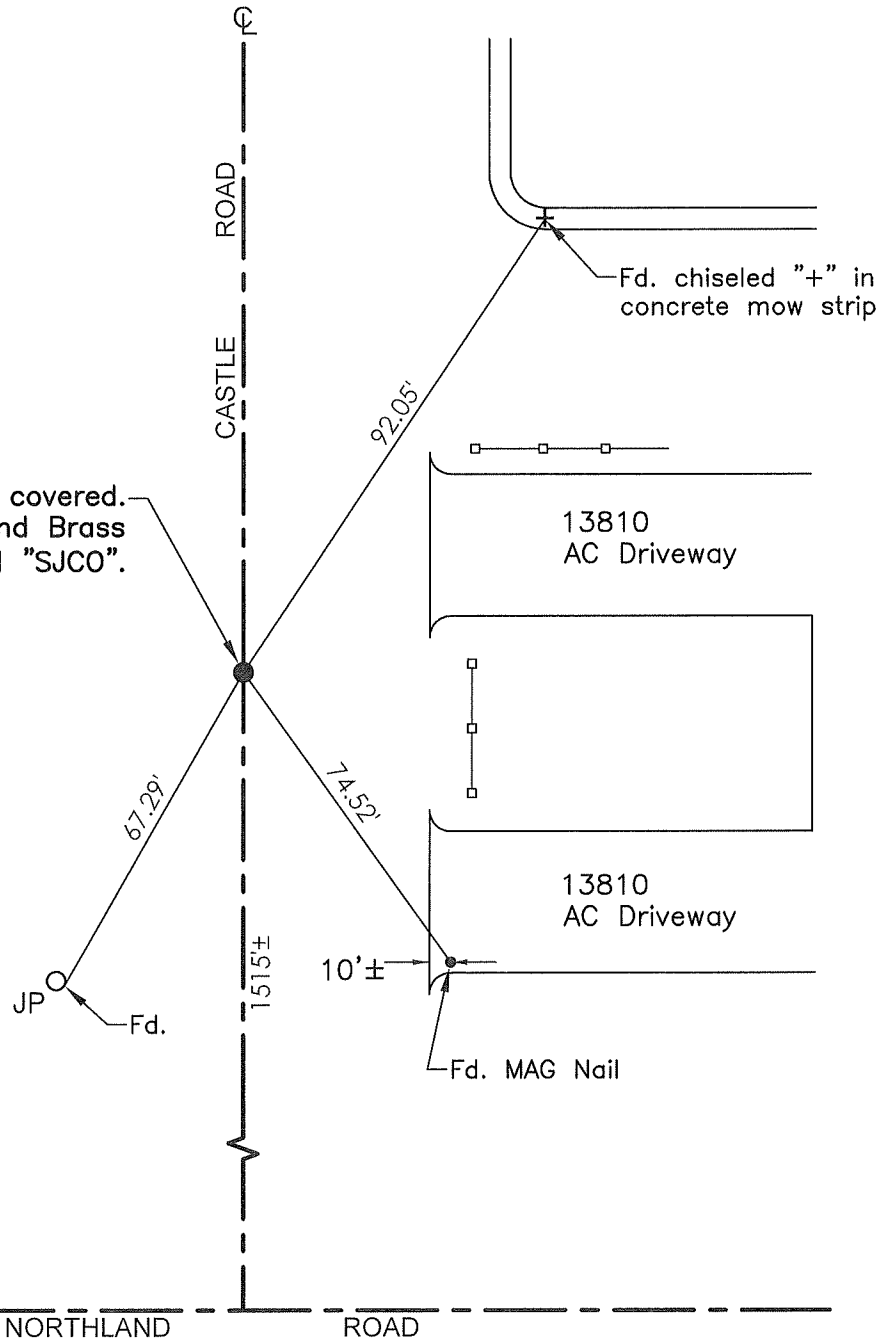
Title _____ County Surveyor

County Surveyor's Comment





Nail per CR 21-09 covered.
Set MAG Nail and Brass
Washer stamped "SJCO".



Set=Conc. Nail with Brass Washer stamped
"S.J. Co.", unless otherwise noted
Fd.=Found Conc. Nail with Brass Washer stamped
"S.J. Co.", unless otherwise noted
Note: Found Monuments are not tagged unless
otherwise noted.

"No attempt was made to verify the Monument(s)"