

# CORNER RECORD

Agency Index

CR-22-010

Document Number

City of \_\_\_\_\_ County of San Joaquin, CaliforniaBrief Legal Description Liberty Road @ Sowles Road**CORNER TYPE****COORDINATES (Optional)**T5N R7E  
MDB&M
 Government Corner  Control   
 Meander  Property   
 Rancho  Other 
Date of Survey August 27, 2021

N. \_\_\_\_\_ E. \_\_\_\_\_

Elevation. \_\_\_\_\_

Units Metric  U.S. Survey Foot 

Horizontal Datum \_\_\_\_\_

Zone \_\_\_\_\_ Epoch Date \_\_\_\_\_

Vertical Datum \_\_\_\_\_

 Complies with Public Resources Code §§8801-8819 Complies with Public Resources Code §§8890-8902

PLS Act Ref.:

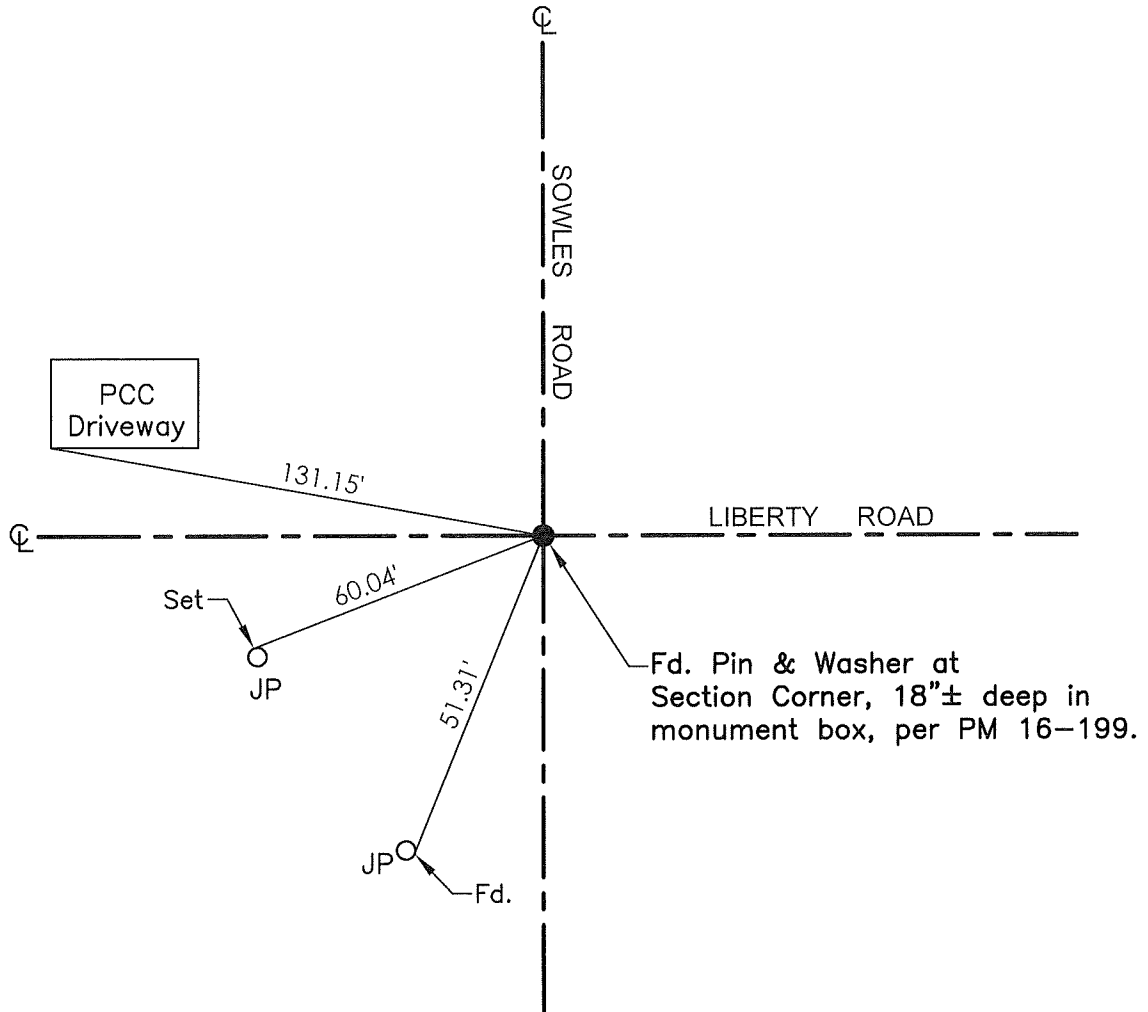
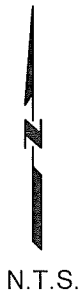
 8765(d) 8771 8773 Other:Corner/  
Monument: Left as found Established Rebuilt Pre-Construction Found and tagged Reestablished Referenced Post-Construction

Narrative of corner identified and monument as found, set, reset, replaced, or removed:

 See sheet #2 for description(s):**SURVEYOR'S STATEMENT**

This Corner Record was prepared by me or under my direction in conformance with

the Professional Land Surveyor's Act on October 3, 2021Signed James E. Hart P.L.S. or R.C.E. No. 8657**COUNTY SURVEYOR'S STATEMENT**This Corner Record was received December 30, 2021and examined and filed January 14, 2022Signed James E. Hart P.L.S. or R.C.E. No. 8657Title County Surveyor**County Surveyor's Comment**



- TR=Tree
- MB=Mailbox
- BM=Bench Mark
- EP=Edge of Pavement
- YL=Yellow Line
- FH=Fire Hydrant
- CR=Corner Record
- FP=Fence Post
- JP=Joint Pole
- LP=Light Pole
- PP=Power Pole
- GP=Guy Pole
- SP=Service Pole
- TP=Telephone Pole
- S.F.N.=Searched Found Nothing
- N.T.S.=Not To Scale
- M&P=Maps & Plats
- PM=Parcel Map
- RS=Record of Survey
- FB=Field Book
- N=North
- SDI=Storm Drain Inlet
- TOC=Top of Curb
- PCC=Portland Cement Concrete

Set=Conc. Nail with Brass Washer stamped "S.J. Co.", unless otherwise noted  
 Fd.=Found Conc. Nail with Brass Washer stamped "S.J. Co.", unless otherwise noted  
 Note: Found Monuments are not tagged unless otherwise noted.

"No attempt was made to verify the Monument(s)"