

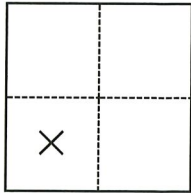
CORNER RECORD

Agency Index CR-22-002
Document Number _____

City of MANTECA County of SAN JOAQUIN, California
Brief Legal Description 1.168 ACRE PARCEL PER PM 2-83

CORNER TYPE

COORDINATES (Optional)



- Government Corner
- Meander
- Rancho
- Control
- Property
- Other

Date of Survey January 10, 2019

N. _____ E. _____
 Elevation _____
 Units Metric U.S. Survey Foot
 Horizontal Datum _____
 Zone _____ Epoch Date _____
 Vertical Datum _____
 Complies with Public Resources Code §§8801-8819
 Complies with Public Resources Code §§8890-8902

- PLS Act Ref.: 8765(d) 8771 8773 Other:
- Corner/Monument: Left as found Established Rebuilt Pre-Construction
 Found and tagged Reestablished Referenced Post-Construction

Narrative of corner identified and monument as found, set, reset, replaced, or removed:

See sheet #2 for description(s):

FOUND 3/4" REBAR, 3/4" IRON PIPE AND 5/8" REBAR.

SURVEYOR'S STATEMENT

This Corner Record was prepared by me or under my direction in conformance with
 the Professional Land Surveyors' Act on JANUARY 3RD, 2022
 Signed [Signature] P.L.S. or R.C.E. No. 8513



COUNTY SURVEYOR'S STATEMENT

This Corner Record was received January 4, 2022
 and examined and filed January 14, 2022
 Signed James E. Hart P.L.S. or R.C.E. No. 8657
 Title County Surveyor



County Surveyor's Comment

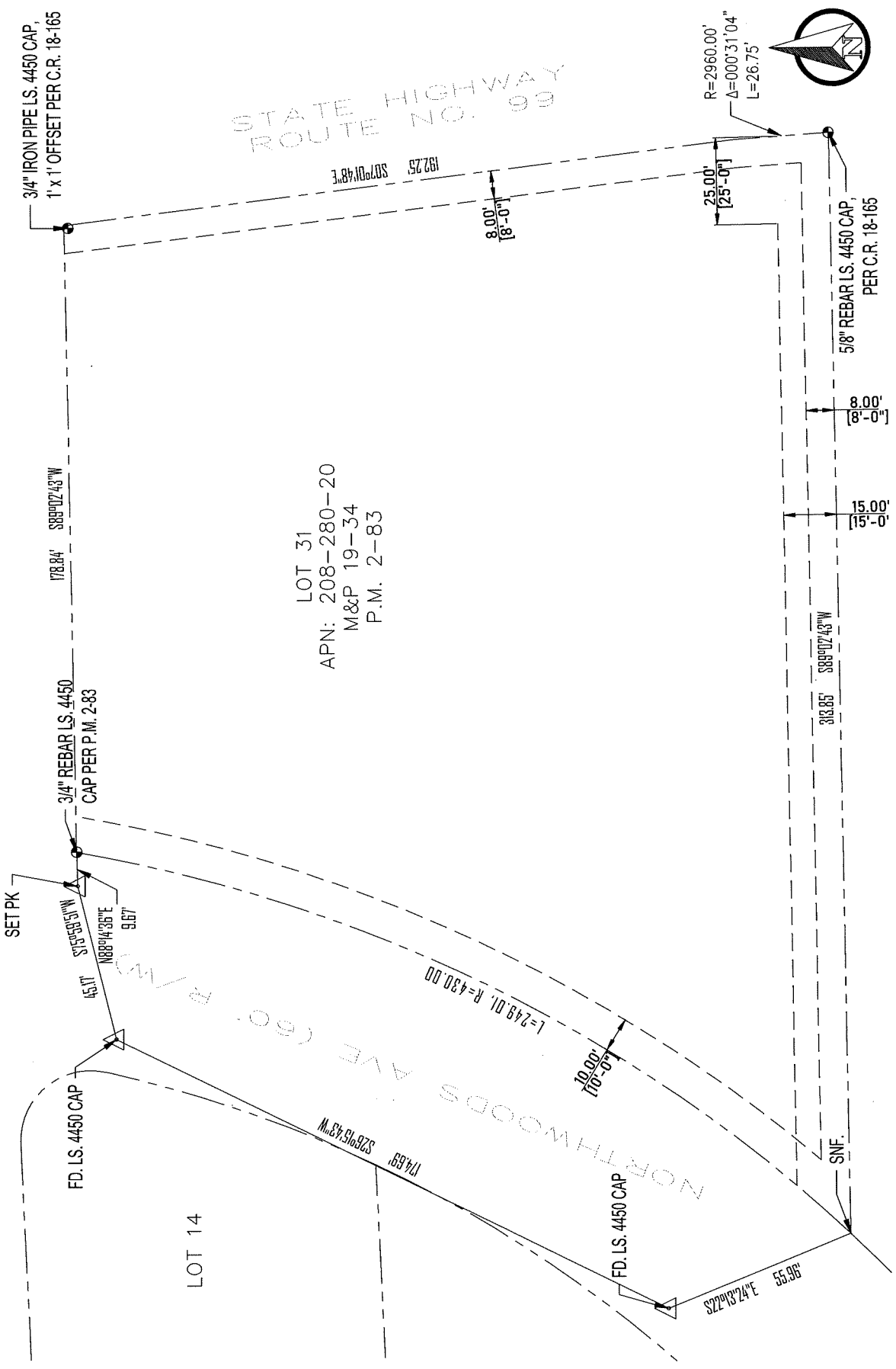
LEGEND:

- PROPERTY LINE PER (PARCEL MAP BK.2 PG.83 S.J.C.R.) EASEMENT
- FOUND MONUMENT, AS NOTED
- MONUMENT TIES AS NOTED

MINIARY
CIR
(50' R/W)

ABBREVIATIONS:

- S.J.C.R. SAN JOAQUIN COUNTY RECORDS
- C.R. CORNER RECORD, SAN JOAQUIN COUNTY SURVEYOR'S RECORDS
- P.M. PARCEL MAP
- M&P MAPS AND PLATS
- SNF. SEARCH NOT FOUND



LOT 31
APN: 208-280-20
M&P 19-34
P.M. 2-83

LOT 14

