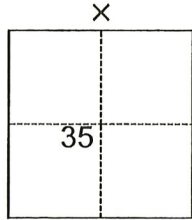


# CORNER RECORD

Agency Index CR-21-250  
Document Number \_\_\_\_\_

City of \_\_\_\_\_ County of San Joaquin, California  
Brief Legal Description A.P.N.- 105-210-04, "A" as shown on CHW EE-84, S.J.C.S.R.



### CORNER TYPE

- Government Corner
- Meander
- Rancho
- Control
- Property
- Other

Date of Survey November 24, 2021

### COORDINATES (Optional)

N. \_\_\_\_\_ E. \_\_\_\_\_  
Elevation \_\_\_\_\_  
Units  Metric  U.S. Survey Foot  
Horizontal Datum \_\_\_\_\_  
Zone \_\_\_\_\_ Epoch Date \_\_\_\_\_  
Vertical Datum \_\_\_\_\_  
 Complies with Public Resources Code §§8801-8819  
 Complies with Public Resources Code §§8890-8902

T.2N., R.8E., M.D.B.&M.

PLS Act Ref.:  8765(d)  8771  8773  Other:  
 Corner/Monument:  Left as found  Established  Rebuilt  Pre-Construction  
 Found and tagged  Reestablished  Referenced  Post-Construction

Narrative of corner identified and monument as found, set, reset, replaced, or removed:  
 See sheet #2 for description(s):

### SURVEYOR'S STATEMENT

This Corner Record was prepared by me or under my direction in conformance with  
 the Professional Land Surveyors' Act on December 16, 2021  
 Signed Joe Murphy (P.L.S.) or R.C.E. No. 7269



### COUNTY SURVEYOR'S STATEMENT

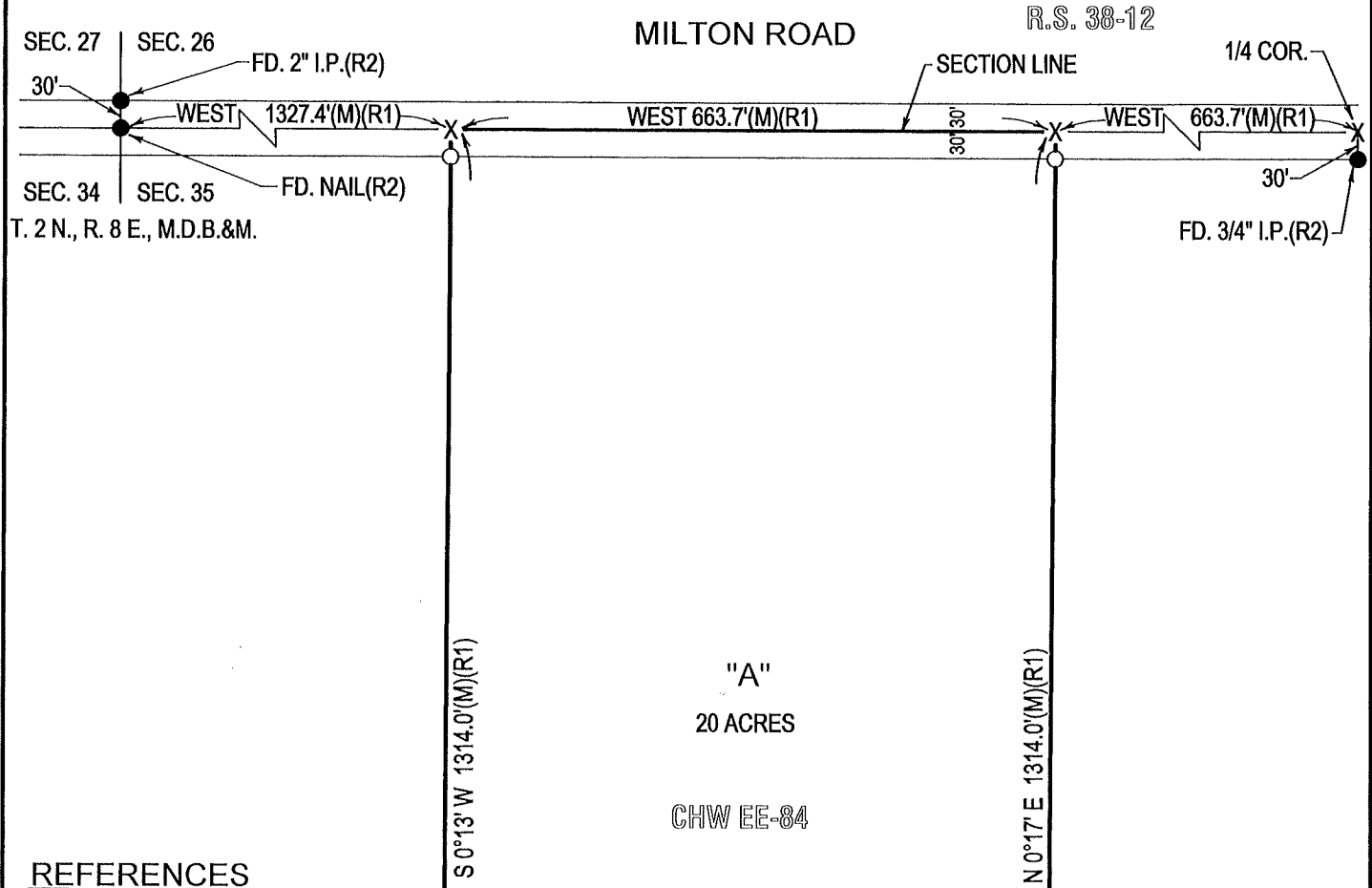
This Corner Record was received December 17, 2021  
 and examined and filed December 30, 2021  
 Signed James E. Hart P.L.S. or R.C.E. No. 8657  
 Title County Surveyor



County Surveyor's Comment



NOT TO SCALE



**REFERENCES**

- (R1) CHW EE-84, S.J.C.S.R.
- (R2) R.S. 38-12, S.J.C.R.

**LEGEND**

- FD. FOUND
- S.J.C.R. SAN JOAQUIN COUNTY RECORDS
- S.J.C.S.R. SAN JOAQUIN COUNTY SURVEYOR'S RECORDS
- SEC. SECTION
- I.P. IRON PIPE
- COR. CORNER
- (M) MEASURED
- SFN SEARCHED FOUND NOTHING
- P.M. PARCEL MAP
- CHW CHAS. H. WIDDOWS
- SET 3/4" X 30" IRON ROD CAPPED "L.S. 7269" OR AS NOTED
- FOUND MONUMENT AS NOTED
- X— DIMENSION POINT, NOTHING FOUND OR SET