

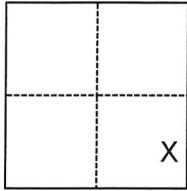
CORNER RECORD

Agency Index CR-21-249
 Document Number _____

City of Lodi County of San Joaquin, California
 Brief Legal Description Property monuments at alley north of Pine St (Garfield St. - Cherokee Ln.)

CORNER TYPE

COORDINATES (Optional)



- Government Corner Control
 Meander Property
 Rancho Other

N. _____ E. _____
 Elevation _____
 Units Metric U.S. Survey Foot
 Horizontal Datum NAD83
 Zone III Epoch Date 2007.00
 Vertical Datum NAVD88
 Complies with Public Resources Code §§8801-8819
 Complies with Public Resources Code §§8890-8902

Date of Survey June 21, 2021

Section 1, T.3N.,R.6E.
 M.D.B.&M.

- PLS Act Ref.: 8765(d) 8771 8773 Other:
 Corner/
 Monument: Left as found Established Rebuilt Pre-Construction
 Found and tagged Reestablished Referenced Post-Construction

Narrative of corner identified and monument as found, set, reset, replaced, or removed:

See sheet #2 for description(s):

SET AND LOCATED 2 CONTROL POINTS USING GPS. USED TOTAL STATION SET UP ON CONTROL POINTS TO ESTABLISH LOCATION OF 5 FOUND MONUMENTS ON LOT LINE PROJECTIONS (CHW GG-037, M&P 10-34 AND RS 28-75) AND 9 MONUMENTS OF NO RECORD WHICH DO NOT APPEAR TO CONTROL VERTICAL OR HORIZONTAL SURVEYS. NO BOUNDARY ANALYSIS WAS PERFORMED.

SURVEYOR'S STATEMENT

This Corner Record was prepared by me or under my direction in conformance with the Professional Land Surveyors' Act on November 2, 2021.

Signed [Signature] P.L.S. or R.C.E. No. 9478



COUNTY SURVEYOR'S STATEMENT

This Corner Record was received December 10, 2021
 and examined and filed December 23, 2021.

Signed James E Hart P.L.S. or R.C.E. No. 8657
 Title County Surveyor

County Surveyor's Comment



POINT	NORTHING	EASTING	DESCRIPTION
A	2236478.938	6342074.369	CONTROL POINT, MAG NAIL
B	2236489.753	6342865.317	CONTROL POINT, SPIKE
C	2236471.159	6342136.809	BENT SPIKE, NO RECORD, NOTE 1
D	2236467.187	6342159.142	1" IROD, M&P 10-34
E	2236471.078	6342216.228	1" IROD, M&P 10-34
F	2236480.773	6342297.365	PK-NAIL, NO RECORD, NOTE 1
G	2236481.023	6342307.354	PK-NAIL, NO RECORD, NOTE 1
H	2236482.118	6342347.256	PK-NAIL, NO RECORD, NOTE 1
I	2236472.520	6342345.144	3/4" PIPE, CHW GG-37
J	2236482.151	6342387.286	PK-NAIL, NO RECORD, NOTE 1
K	2236473.248	6342395.412	1/2" REBAR, M&P 10-34
L	2236482.067	6342397.264	PK-NAIL, NO RECORD, NOTE 1
M	2236482.068	6342407.294	PK-NAIL, NO RECORD, NOTE 1
N	2236478.161	6342417.273	PK-NAIL, NO RECORD, NOTE 1
O	2236482.105	6342417.302	PK-NAIL, NO RECORD, NOTE 1
V	2236298.384	6342043.599	1" IRON PIPE, CALLED IRON ROD ON RS 28-75

LEGEND

- FOUND MONUMENT AS NOTED
- SET CONTROL POINT
- FD FOUND ON THIS SURVEY
- SFN SEARCHED, FOUND NOTHING
- RS RECORD OF SURVEY, BOOK & PAGE, SAN JOAQUIN COUNTY RECORDS

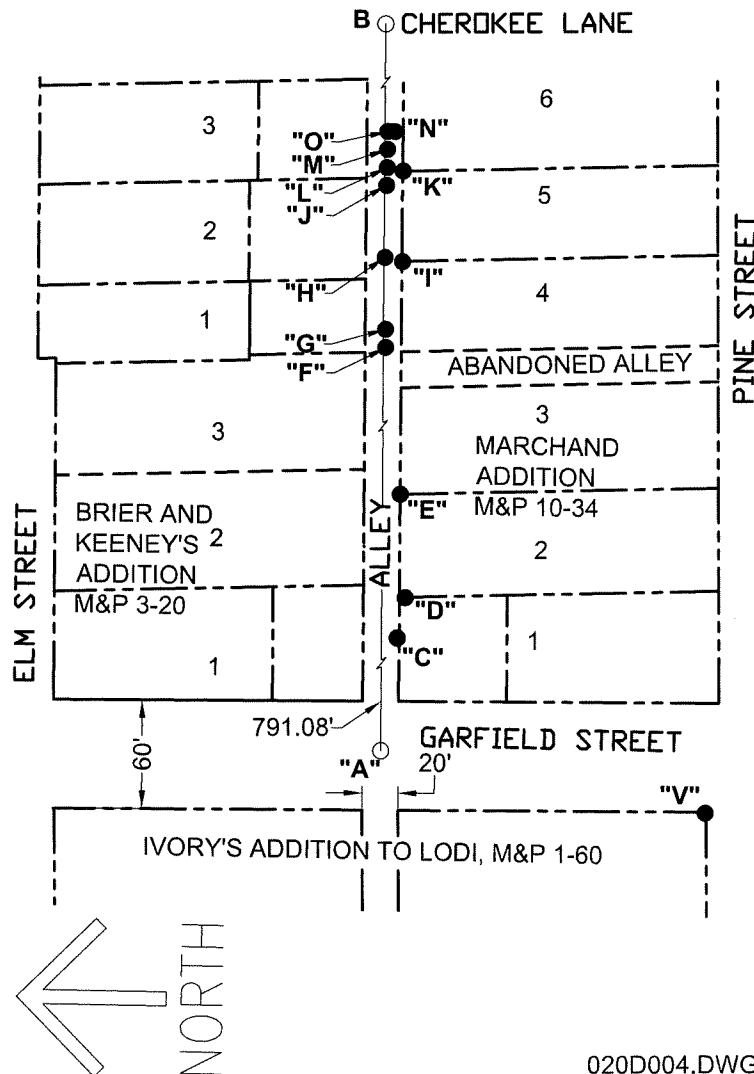
NOTES

1. PK NAIL AND SPIKES DO NOT APPEAR TO CONTROL VERTICAL OR HORIZONTAL SURVEYS AND WILL NOT BE REBUILT IF DESTROYED BY CONSTRUCTION.
2. COORDINATES ARE GRID.
3. NO TAGS WERE FOUND ON MONUMENTS.

M&P MAPS & PLATS, VOLUME AND PAGE, SAN JOAQUIN COUNTY RECORDS

(M) MEASURED ON THIS SURVEY

CHW UNRECORDED MAP OF SURVEY BY CH WIDDOWS, FILE NUMBER, COUNTY SURVEYOR'S OFFICE



STATEMENT OF PURPOSE:

THE PURPOSE OF THIS SURVEY IS TO IDENTIFY AND RECORD THE LOCATION OF EXISTING MONUMENTS PRIOR TO THE CONSTRUCTION OF AN ALLEY CAPITAL IMPROVEMENT PROJECT. NO BOUNDARY ANALYSIS WAS PERFORMED.

DATUM STATEMENT:

COORDINATES FOR CONTROL POINTS A & B WERE LOCATED USING G.P.S. AFTER A SYSTEM ADJUSTMENT TO 9 CITY OF LODI MONUMENTS (H1090, I2429, M1890, P1090, P2699, T1890, X1090, X1390 AND X2650) AS SHOWN ON RECORD OF SURVEY BOOK 37 OF SURVEYS, PAGE 50 BASED ON THE CALIFORNIA COORDINATE SYSTEM (CCS83), ZONE III, 1983 NAD, EPOCH DATE 2007.00. THE PROJECT SPECIFIC COMBINED SCALE FACTOR IS 0.99995382. COORDINATES SHOWN ON THIS SHEET.

NOTE:

FIELD EFFORT INCLUDED A SEARCH ALONG THE ALLEY AT EACH PROPERTY CORNER. ONLY THOSE FOUND ARE SHOWN.

SCALE: 1"=100'

020D004.DWG