

# CORNER RECORD

Agency Index CR-21-246

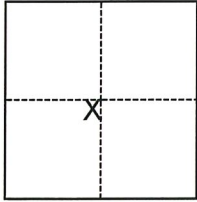
Document Number \_\_\_\_\_

City of Lodi County of San Joaquin, California

Brief Legal Description Property monuments at Elm Street & Main Street (PM 11-200)

### CORNER TYPE

### COORDINATES (Optional)



- Government Corner
- Meander
- Rancho
- Control
- Property
- Other

Date of Survey August 23, 2021

N. \_\_\_\_\_ E. \_\_\_\_\_

Elevation \_\_\_\_\_

Units  Metric  U.S. Survey Foot

Horizontal Datum \_\_\_\_\_

Zone \_\_\_\_\_ Epoch Date \_\_\_\_\_

Vertical Datum \_\_\_\_\_

Complies with Public Resources Code §§8801-8819

Complies with Public Resources Code §§8890-8902

Section 1, T.3N., R.6E.  
M.D.B.&M.

PLS Act Ref.:  8765(d)  8771  8773  Other:

Corner/Monument:  Left as found  Established  Rebuilt  Pre-Construction

Found and tagged  Reestablished  Referenced  Post-Construction

Narrative of corner identified and monument as found, set, reset, replaced, or removed:

See sheet #2 for description(s):

FOUND MONUMENTS AT NORTHEAST CORNER PER P.M. 11-200 OF ELM STREET AND MAIN STREET ON LOT LINE PROJECTIONS. NO BOUNDARY ANALYSIS WAS PERFORMED. THE FOUND MONUMENTS THAT WERE REMOVED OR COVERED DURING CONSTRUCTION WERE RESET AT THEIR ESTABLISHED LOCATION AFTER CONSTRUCTION.

### SURVEYOR'S STATEMENT

This Corner Record was prepared by me or under my direction in conformance with

the Professional Land Surveyors' Act on October 1, 2021

Signed [Signature] P.L.S. or R.C.E. No. 9478



### COUNTY SURVEYOR'S STATEMENT

This Corner Record was received October 14, 2021

and examined and filed October 28, 2021

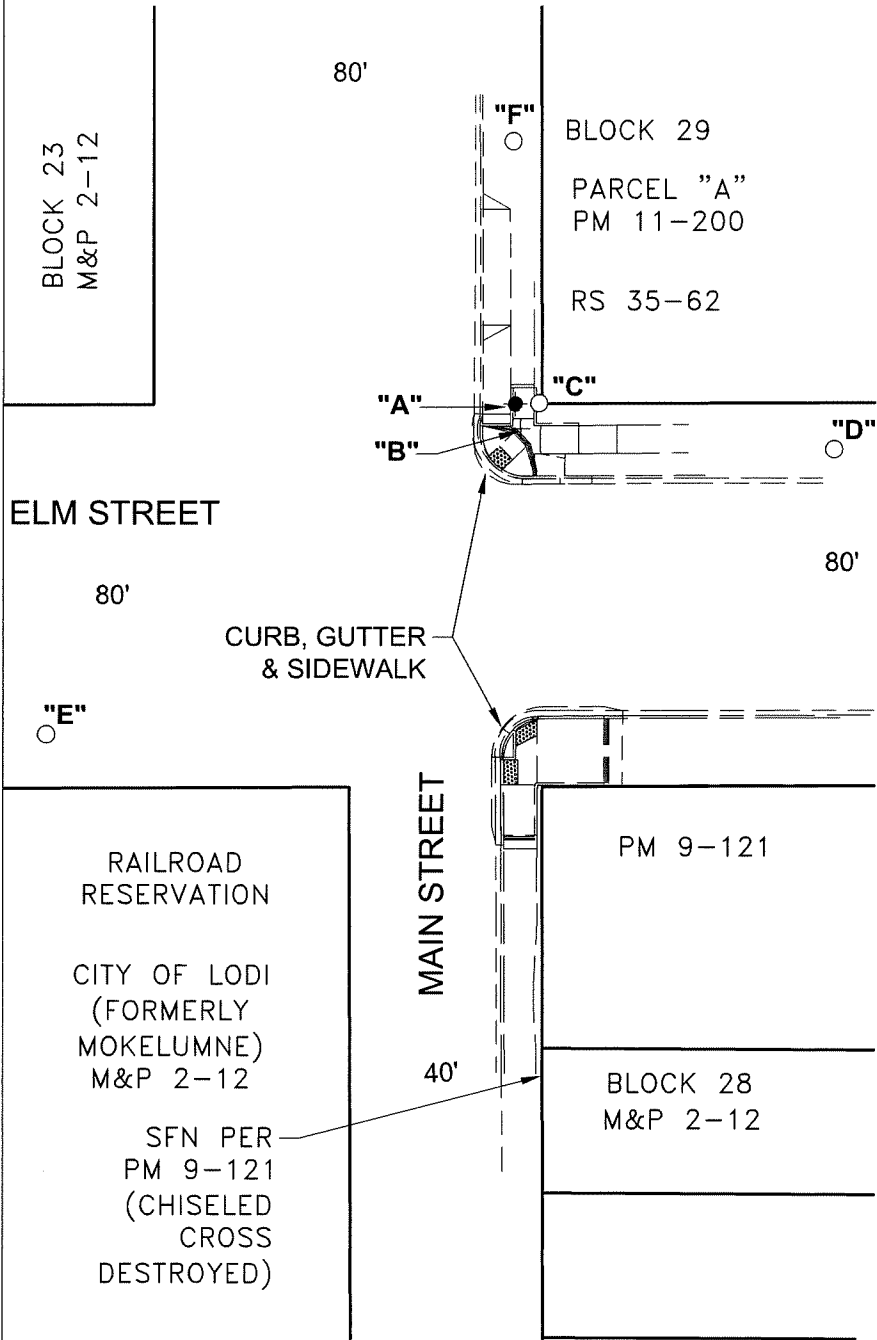
Signed James E. Hart P.L.S. or R.C.E. No. 8657

Title County Surveyor


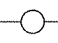

County Surveyor's Comment



DISTANCE (M) TABLE							
	MONUMENT	FROM	DISTANCE	FROM2	DISTANCE2	FROM3	DISTANCE3
"A"	CHISELED CROSS WITH NAIL AND WASHER	"D"	67.21'	"E"	119.32'	"F"	54.59'
"B"	CHISELED CROSS	"D"	65.54'	"E"	117.37'	"F"	59.79'
"C"	SET NAIL AND WASHER	"D"	62.28'	"E"	123.56'	"F"	54.67'



**LEGEND**

-  SET CHISELED CROSS WITH NAIL AND WASHER STAMPED "C.O.L. LS 9478"
-  FOUND NAIL AND WASHER STAMPED "C.O.L. LS 9478", UNLESS OTHERWISE NOTED
-  SET UNTAGGED CHISELED CROSS
- FD FOUND ON THIS SURVEY PER PM 11-200
- SFN SEARCHED, FOUND NOTHING
- M&P MAPS & PLATS, VOLUME AND PAGE, SJCR
- PM PARCEL MAPS, BOOK AND PAGE, SJCR
- RS RECORD OF SURVEY, BOOK AND PAGE, SJCR
- (M) MEASURED ON THIS SURVEY
- IROD IRON ROD
- SJCR SAN JOAQUIN COUNTY RECORDS



SCALE: 1"=40'

021A003.dwg