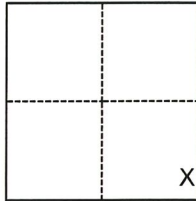


CORNER RECORD

Agency Index CR-21-243
Document Number _____

City of Lodi County of San Joaquin, California
Brief Legal Description Property monuments at Mills Avenue & Kenway Court (M&P 20-18)



CORNER TYPE

- Government Corner
- Meander
- Rancho
- Control
- Property
- Other

Date of Survey August 18, 2021

COORDINATES (Optional)

N. _____ E. _____
 Elevation _____
 Units Metric U.S. Survey Foot
 Horizontal Datum _____
 Zone _____ Epoch Date _____
 Vertical Datum _____
 Complies with Public Resources Code §§8801-8819
 Complies with Public Resources Code §§8890-8902

Section 3, T.3N., R.6E., M.D.B.&M.

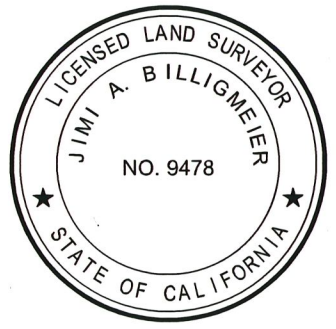
- PLS Act Ref.: 8765(d) 8771 8773 Other:
- Corner/Monument: Left as found Established Rebuilt Pre-Construction
 Found and tagged Reestablished Referenced Post-Construction

Narrative of corner identified and monument as found, set, reset, replaced, or removed:
 See sheet #2 for description(s):
 Found 4 iron rods set per M&P 20-18. Set 3 nail and washers as ties. All monuments left as found.

SURVEYOR'S STATEMENT

This Corner Record was prepared by me or under my direction in conformance with
 the Professional Land Surveyors' Act on August 18, 2021

Signed [Signature] P.L.S. or R.C.E. No. P.L.S. 9478



COUNTY SURVEYOR'S STATEMENT

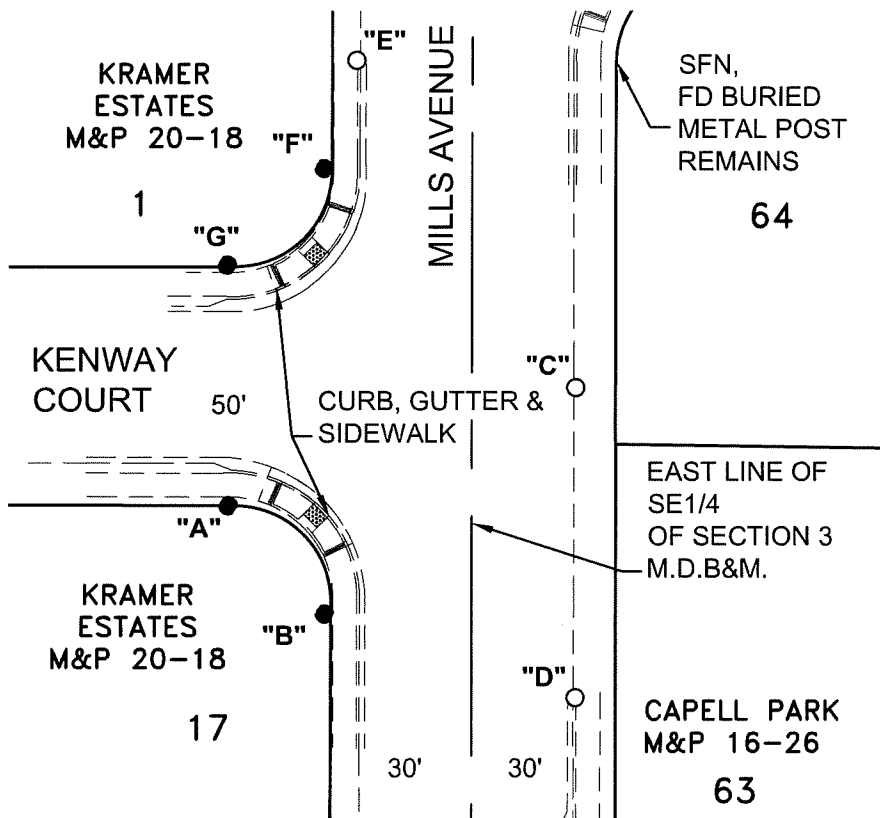
This Corner Record was received August 31, 2021
 and examined and filed September 27, 2021

Signed James E. Hart P.L.S. or R.C.E. No. 8657
 Title County Surveyor



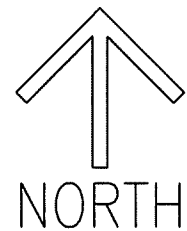
County Surveyor's Comment

DISTANCE (M) TABLE							
FD MONUMENT	FROM	DISTANCE	FROM2	DISTANCE2	FROM3	DISTANCE3	
"A"	BENT 3/4" IROD	"C"	76.52'	"D"	82.72'	"E"	96.68'
"B"	BENT 3/4" IROD	"C"	70.56'	"D"	55.17'	"E"	115.74'
"F"	3/4" IROD	"C"	69.73'	"D"	122.32'	"E"	23.53'
"G"	3/4" IROD	"C"	77.07'	"D"	115.89'	"E"	50.39'



LEGEND

- FOUND UNTAGGED MONUMENT AS NOTED IN TABLE
- SET NAIL AND WASHER STAMPED "C.O.L. LS 9478"
- FD FOUND ON THIS SURVEY
- SFN SEARCHED, FOUND NOTHING
- M&P MAPS & PLATS, VOLUME AND PAGE, SJCR
- PM PARCEL MAP, BOOK AND PAGE, SJCR
- (M) MEASURED ON THIS SURVEY
- IROD IRON ROD PER M&P 20-18, SJCR
- SJCR SAN JOAQUIN COUNTY RECORDS



SCALE: 1"=40'

021A003