

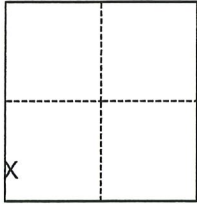
CORNER RECORD

Agency Index CR-21-242
Document Number _____

City of Lodi County of San Joaquin, California
Brief Legal Description Property monuments at Mills Avenue & Jackson Street (M&P 16-26)

CORNER TYPE

COORDINATES (Optional)



- Government Corner
- Meander
- Rancho
- Control
- Property
- Other

Date of Survey August 18, 2021

N. _____ E. _____

Elevation _____

Units Metric U.S. Survey Foot

Horizontal Datum _____

Zone _____ Epoch Date _____

Vertical Datum _____

Complies with Public Resources Code §§8801-8819

Complies with Public Resources Code §§8890-8902

Section 2, T.3N., R.6E., M.D.B.&M.

PLS Act Ref.: 8765(d) 8771 8773 Other:

Corner/Monument: Left as found Established Rebuilt Pre-Construction
 Found and tagged Reestablished Referenced Post-Construction

Narrative of corner identified and monument as found, set, reset, replaced, or removed:

See sheet #2 for description(s):

Found four iron rods set per M&P 16-26. Set three nail & washers as ties. All monuments left as found.

SURVEYOR'S STATEMENT

This Corner Record was prepared by me or under my direction in conformance with
the Professional Land Surveyors' Act on August 18, 2021

Signed [Signature] P.L.S. or R.C.E. No. P.L.S. 9478



COUNTY SURVEYOR'S STATEMENT

This Corner Record was received August 31, 2021

and examined and filed September 27, 2021

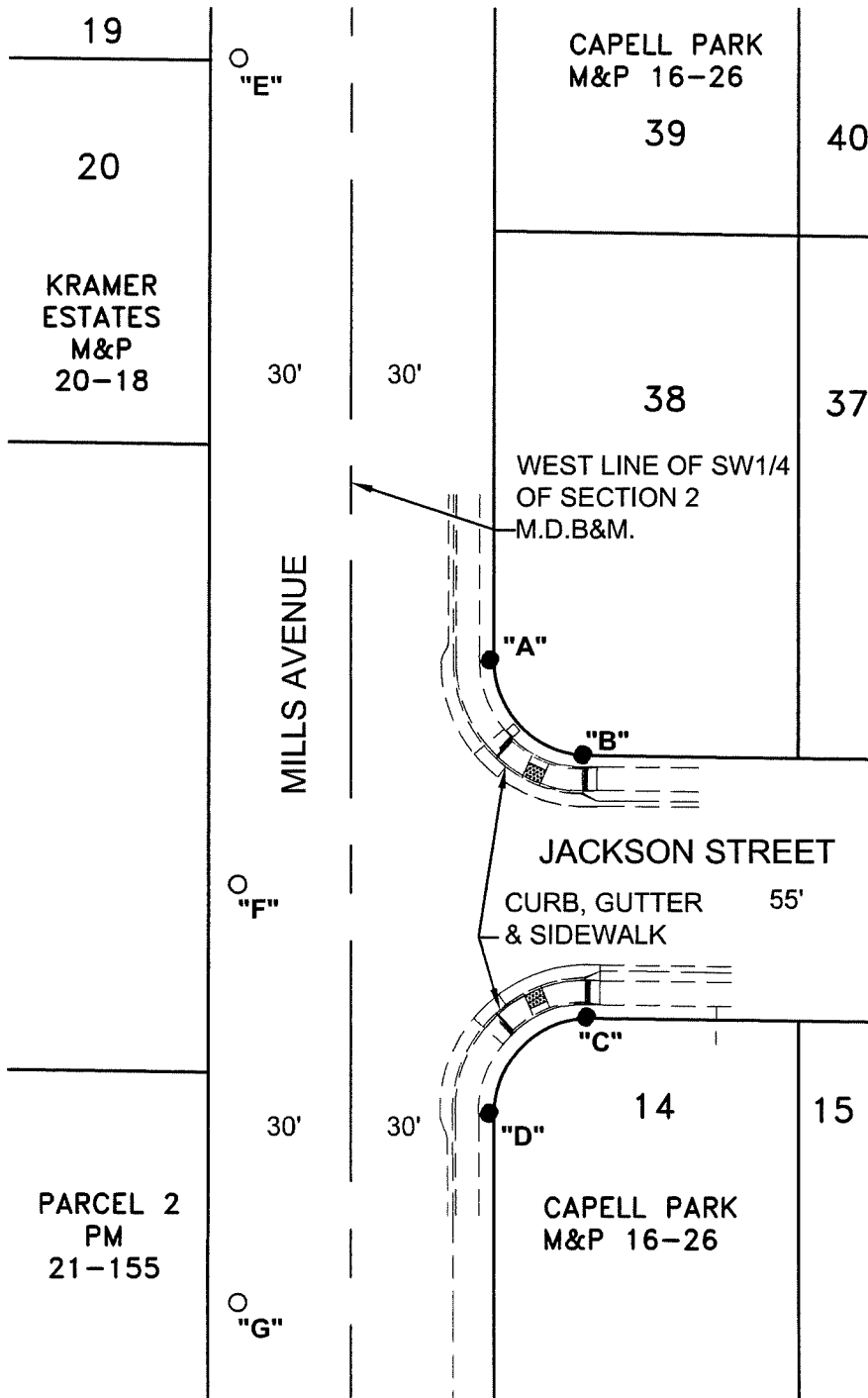
Signed James E. Hart P.L.S. or R.C.E. No. 8657

Title County Surveyor

County Surveyor's Comment

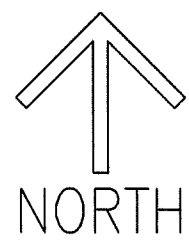


DISTANCE (M) TABLE							
FD MONUMENT	FROM	DISTANCE	FROM2	DISTANCE2	FROM3	DISTANCE3	
"A"	1IN IROD, 0.14' SOUTH IRON POST	"E"	136.86'	"F"	70.92'	"G"	144.36'
"B"	1IN IROD	"E"	163.17'	"F"	77.37'	"G"	135.32'
"C"	1IN IROD	"E"	214.00'	"F"	78.17'	"G"	94.20'
"D"	1IN IROD	"E"	227.35'	"F"	71.10'	"G"	65.85'



LEGEND

- FOUND MONUMENT AS NOTED IN TABLE
- SET NAIL AND WASHER STAMPED "C.O.L. LS 9478"
- FD FOUND ON THIS SURVEY
- SFN SEARCHED, FOUND NOTHING
- M&P MAPS & PLATS, VOLUME AND PAGE, SJCR
- PM PARCEL MAP, BOOK AND PAGE, SJCR
- (M) MEASURED ON THIS SURVEY
- IROD UNTAGGED IRON ROD PER M&P 16-26, SJCR
- SJCR SAN JOAQUIN COUNTY RECORDS



SCALE: 1"=40'

021A003.DWG