

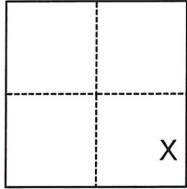
# CORNER RECORD

Agency Index CR-21-240  
Document Number \_\_\_\_\_

City of Lodi County of San Joaquin, California  
Brief Legal Description Property monuments at alley north of Pine St (Garfield St. - Cherokee Ln.)

### CORNER TYPE

### COORDINATES (Optional)



- Government Corner
- Meander
- Rancho
- Control
- Property
- Other

Date of Survey June 21, 2021

N. \_\_\_\_\_ E. \_\_\_\_\_

Elevation \_\_\_\_\_

Units  Metric  U.S. Survey Foot

Horizontal Datum NAD83

Zone III Epoch Date 2007.00

Vertical Datum NAVD88

Complies with Public Resources Code §§8801-8819

Complies with Public Resources Code §§8890-8902

Section 1, T.3N.,R.6E.  
M.D.B.&M.

- PLS Act Ref.:  8765(d)  8771  8773  Other:
- Corner/Monument:  Left as found  Established  Rebuilt  Pre-Construction  
 Found and tagged  Reestablished  Referenced  Post-Construction

Narrative of corner identified and monument as found, set, reset, replaced, or removed:

See sheet #2 for description(s):

SET AND LOCATED 2 CONTROL POINTS USING GPS. USED TOTAL STATION SET UP ON CONTROL POINTS TO ESTABLISH LOCATION OF 4 FOUND MONUMENTS ON LOT LINE PROJECTIONS (M&P 8-49, M&P 10-34 AND RS 28-75) AND 2 MONUMENTS OF NO RECORD WHICH DO NOT APPEAR TO CONTROL VERTICAL OR HORIZONTAL SURVEYS. NO BOUNDARY ANALYSIS WAS PERFORMED.

### SURVEYOR'S STATEMENT



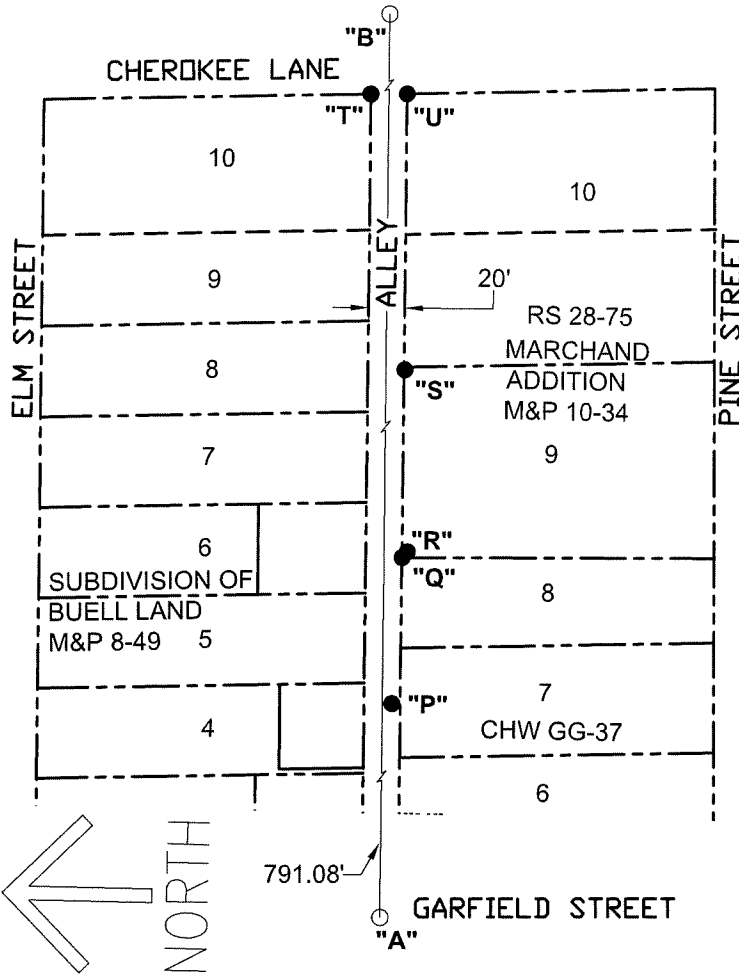
This Corner Record was prepared by me or under my direction in conformance with the Professional Land Surveyors' Act on November 2, 2021.  
Signed [Signature] P.L.S. or R.C.E. No. 9478

### COUNTY SURVEYOR'S STATEMENT

This Corner Record was received December 10, 2021  
and examined and filed December 23, 2021.  
Signed [Signature] P.L.S. or R.C.E. No. 8657  
Title County Surveyor



County Surveyor's Comment



**LEGEND**

- FOUND MONUMENT AS NOTED
- SET CONTROL POINT
- FD FOUND ON THIS SURVEY
- SFN SEARCHED, FOUND NOTHING
- RS RECORD OF SURVEY, BOOK & PAGE, SAN JOAQUIN COUNTY RECORDS
- M&P MAPS & PLATS, VOLUME AND PAGE, SAN JOAQUIN COUNTY RECORDS
- (M) MEASURED ON THIS SURVEY
- CHW UNRECORDED MAP OF SURVEY BY CH WIDDOWS, FILE NUMBER, COUNTY SURVEYOR'S OFFICE

**STATEMENT OF PURPOSE:**

THE PURPOSE OF THIS SURVEY IS TO IDENTIFY AND RECORD THE LOCATION OF EXISTING MONUMENTS PRIOR TO THE CONSTRUCTION OF AN ALLEY CAPITAL IMPROVEMENT PROJECT. NO BOUNDARY ANALYSIS WAS PERFORMED.

**DATUM STATEMENT:**

COORDINATES FOR CONTROL POINTS A & B WERE LOCATED USING G.P.S. AFTER A SYSTEM ADJUSTMENT TO 9 CITY OF LODI MONUMENTS (H1090, I2429, M1890, P1090, P2699, T1890, X1090, X1390 AND X2650) AS SHOWN ON RECORD OF SURVEY BOOK 37 OF SURVEYS, PAGE 50 BASED ON THE CALIFORNIA COORDINATE SYSTEM (CCS83), ZONE III, 1983 NAD, EPOCH DATE 2007.00. THE PROJECT SPECIFIC COMBINED SCALE FACTOR IS 0.99995382. COORDINATES SHOWN ON THIS SHEET.

**NOTE:**

FIELD EFFORT INCLUDED A SEARCH ALONG THE ALLEY AT EACH PROPERTY CORNER. ONLY THOSE FOUND ARE SHOWN.

POINT	NORTHING	EASTING	DESCRIPTION
A	2236478.938	6342074.369	CONTROL POINT, MAG NAIL
B	2236489.753	6342865.317	CONTROL POINT, SPIKE
P	2236479.278	6342485.052	PK-NAIL, NO RECORD, NOTE 1
Q	2236475.638	6342565.984	3/4" IROD, RS 28-75
R	2236475.637	6342566.063	SPIKE, NO RECORD, NOTE 2
S	2236476.619	6342669.641	1/2" IROD BENT, RS 28-75
T	2236499.109	6342821.061	5/8" IROD, M&P 8-49
U	2236479.079	6342821.626	5/8" IROD, M&P 10-34

**NOTES**

1. PK NAIL AND SPIKES DO NOT APPEAR TO CONTROL VERTICAL OR HORIZONTAL SURVEYS AND WILL NOT BE REBUILT IF DESTROYED BY CONSTRUCTION.
2. SPIKE WILL NOT BE REBUILT IF DESTROYED BY CONSTRUCTION TO AVOID DOUBLE MONUMENTATION.
3. COORDINATES ARE GRID.
4. NO TAGS WERE FOUND ON MONUMENTS.