

CORNER RECORD

Agency Index CR-21-238

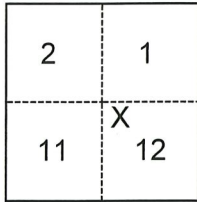
Document Number _____

City of Lodi County of San Joaquin, California

Brief Legal Description Survey monument at School St./South of Chestnut St. (RS 37-1)

CORNER TYPE

COORDINATES (Optional)



- Government Corner Control
 Meander Property
 Rancho Other

N. _____ E. _____

Elevation _____

Units Metric U.S. Survey Foot

Horizontal Datum _____

Zone _____ Epoch Date _____

Vertical Datum _____

Complies with Public Resources Code §§8801-8819

Complies with Public Resources Code §§8890-8902

Date of Survey June 17, 2021

Section 12, T.3N.,R.6E.
M.D.B.&M.

- PLS Act Ref.: 8765(d) 8771 8773 Other:
 Corner/
 Monument: Left as found Established Rebuilt Pre-Construction
 Found and tagged Reestablished Referenced Post-Construction

Narrative of corner identified and monument as found, set, reset, replaced, or removed:

See sheet #2 for description(s):

FOUND NAIL & SHINER TAGGED L.S. 8080 AT APPROXIMATE LOT LINE PROJECTIONS. NO RECORD MAP WAS FOUND, BUT WAS LOCATED FOR RECORD. TIES WERE MADE TO ONE FOUND MONUMENT PER RS 36-88 AND SET NAIL AND WASHER. NO BOUNDARY ANALYSIS WAS PERFORMED.

SURVEYOR'S STATEMENT

This Corner Record was prepared by me or under my direction in conformance with the Professional Land Surveyors' Act on October 1, 2021.

Signed [Signature] P.L.S. or R.C.E. No. 9478



COUNTY SURVEYOR'S STATEMENT

This Corner Record was received October 14, 2021

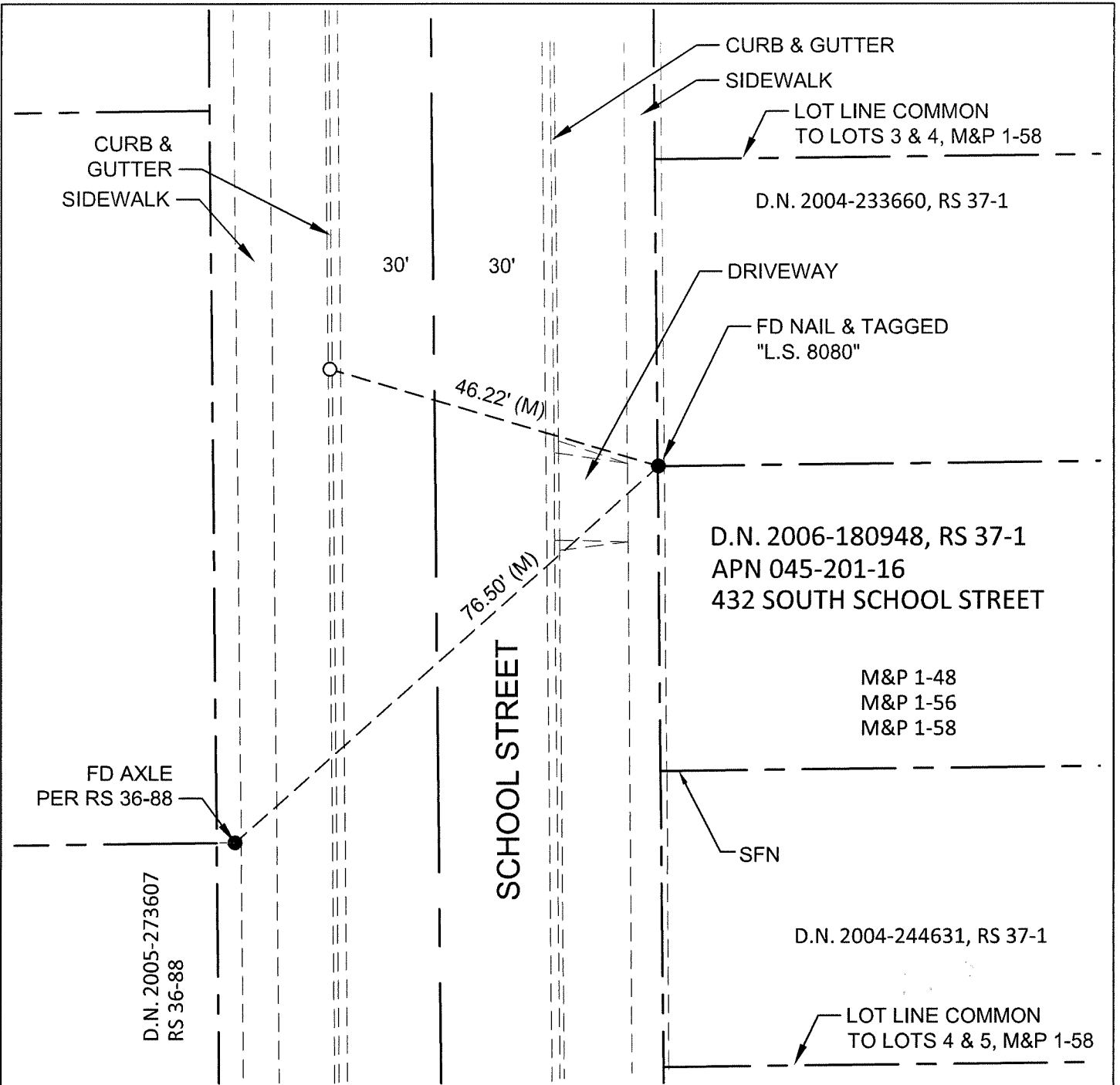
and examined and filed October 28, 2021.

Signed James E. Hart P.L.S. or R.C.E. No. 8657

Title County Surveyor

County Surveyor's Comment





LEGEND

- FOUND MONUMENT AS NOTED
- SET NAIL AND WASHER STAMPED "C. O. L. LS 9478"
- FD FOUND ON THIS SURVEY
- SFN SEARCHED, FOUND NOTHING
- RS RECORD OF SURVEY, BOOK & PAGE, SAN JOAQUIN COUNTY RECORDS

- M&P MAPS & PLATS, VOLUME AND PAGE, SAN JOAQUIN COUNTY RECORDS
- (M) MEASURED ON THIS SURVEY
- D.N. DOCUMENT NUMBER, SAN JOAQUIN COUNTY RECORDS



SCALE: 1"=20'