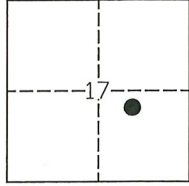


CORNER RECORD

Agency Index: CR-21-235
Document Number: _____

City of STOCKTON County of SAN JOAQUIN, California
Brief Legal Description FOUND MONUMENT ON PARK WOODS DRIVE



T.2N, R.6E

CORNER TYPE

- Government Corner
- Meander
- Rancho
- Control
- Property
- Other

Date of Survey 09-20-2021

COORDINATES (Optional)

N. _____ E. _____
 Elevation _____
 Units Metric U.S. Survey Foot
 Horizontal Datum _____
 Zone _____ Epoch Date _____
 Vertical Datum _____
 Complies with Public Resources Code SS8801-8819
 Complies with Public Resources Code SS8890-8902

PLS Act Ref: 8765(d) 8771 8773 Other:

Corner/Monument: Left as found Established Rebuilt Pre-Construction
 Found and Tagged Reestablished Referenced Post-Construction

Narrative of corner identified and monument as found, set, reset, replaced, or removed:

See sheet #2 for description(s):

FOUND ONE (1) CHISELED CROSS WITH NO REFERENCE ON THE EAST SIDE OF PARK WOODS DRIVE. SET THREE (3) CONCRETE NAILS WITH BRASS TAG "L.S. 6953" AS WITNESS CORNERS, ALL AS SHOWN ON PAGE 2.

SURVEYOR'S STATEMENT

This Corner Record was prepared by me or under my direction in conformance with the Land Surveyors' Act on OCTOBER 1, 2021,



Signed [Signature] P.L.S. or R.C.E. Number 6953

COUNTY SURVEYOR'S STATEMENT

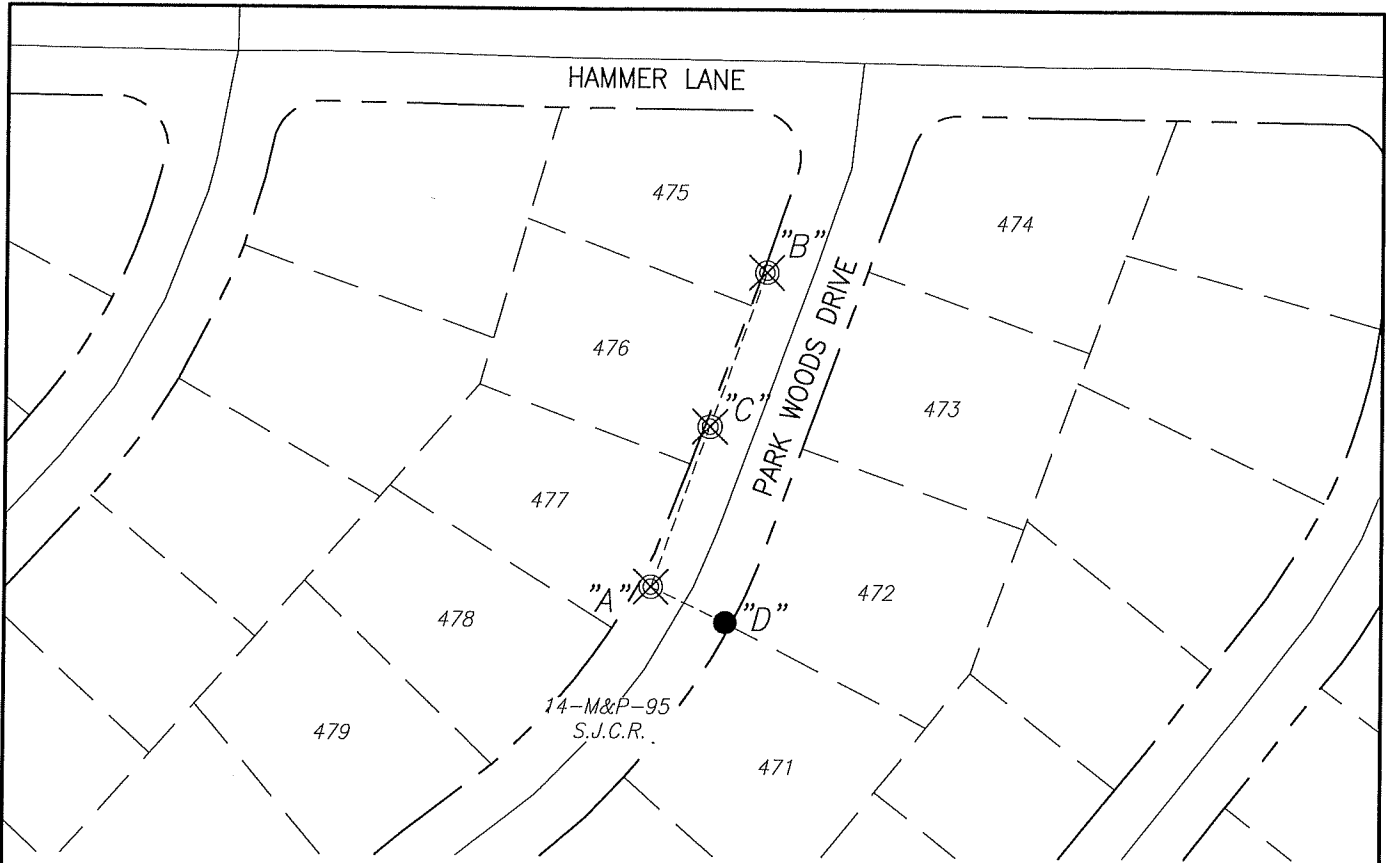
This Corner Record was received October 28, 2021 and examined and filed November 18, 2021

Signed James E. Hart P.L.S. or R.C.E. No: 8657

Title County Surveyor



County Surveyor's Comment _____



℄ AND DISTANCE TABLE

<i>BS-@-FS</i>	<i>℄</i>	<i>FS DISTANCE</i>
<i>B-A-B</i>	<i>00°00'00"</i>	<i>181.90'(M)</i>
<i>B-A-C</i>	<i>00°00'00"</i>	<i>92.00'(M)</i>
<i>B-A-D</i>	<i>96°23'54"</i>	<i>40.52'(M)</i>



NOT TO SCALE

LEGEND:

- SET CONCRETE NAIL WITH BRASS TAG "L.S. 6953"
- FOUND CHISELED CROSS IN SIDEWALK
- S.J.C.R. SAN JOAQUIN COUNTY RECORDS
- M&P- MAPS & PLATS
- (M) MEASURED DISTANCE. ALL DISTANCES ARE MEASURED UNLESS NOTED OTHERWISE.