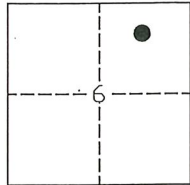


# CORNER RECORD

Agency Index: CR-21-233  
 Document Number: \_\_\_\_\_  
 City of STOCKTON County of SAN JOAQUIN, California

Brief Legal Description FOUND MONUMENT ON ALPINE AVENUE



CAMPO DE  
LOS FRANCESES

### CORNER TYPE

- Government Corner     Control  
 Meander                     Property  
 Rancho                         Other

Date of Survey 09-28-2021

### COORDINATES (Optional)

N. \_\_\_\_\_ E. \_\_\_\_\_  
 Elevation \_\_\_\_\_  
 Units     Metric     U.S. Survey Foot  
 Horizontal Datum \_\_\_\_\_  
 Zone \_\_\_\_\_ Epoch Date \_\_\_\_\_  
 Vertical Datum \_\_\_\_\_  
 Complies with Public Resources Code SS8801-8819  
 Complies with Public Resources Code SS8890-8902

- PLS Act Ref:     8765(d)                     8771                     8773                     Other:  
 Corner/  
 Monument:     Left as found                     Established                     Rebuilt                     Pre-Construction  
                    Found and Tagged                     Reestablished                     Referenced                     Post-Construction

Narrative of corner identified and monument as found, set, reset, replaced, or removed:

See sheet #2 for description(s):

FOUND ONE (1) CHISELED CROSS WITH NO REFERENCE ON THE SOUTH SIDE OF ALPINE AVENUE. SET THREE (3) CONCRETE NAILS WITH BRASS TAG "L.S. 6953" AS WITNESS CORNERS, ALL AS SHOWN ON PAGE 2.

### SURVEYOR'S STATEMENT

This Corner Record was prepared by me or under my direction in conformance with the Land Surveyors' Act on OCTOBER 1, 2021,



Signed [Signature] P.L.S. or R.C.E. Number 6953

### COUNTY SURVEYOR'S STATEMENT

This Corner Record was received December 6, 2021

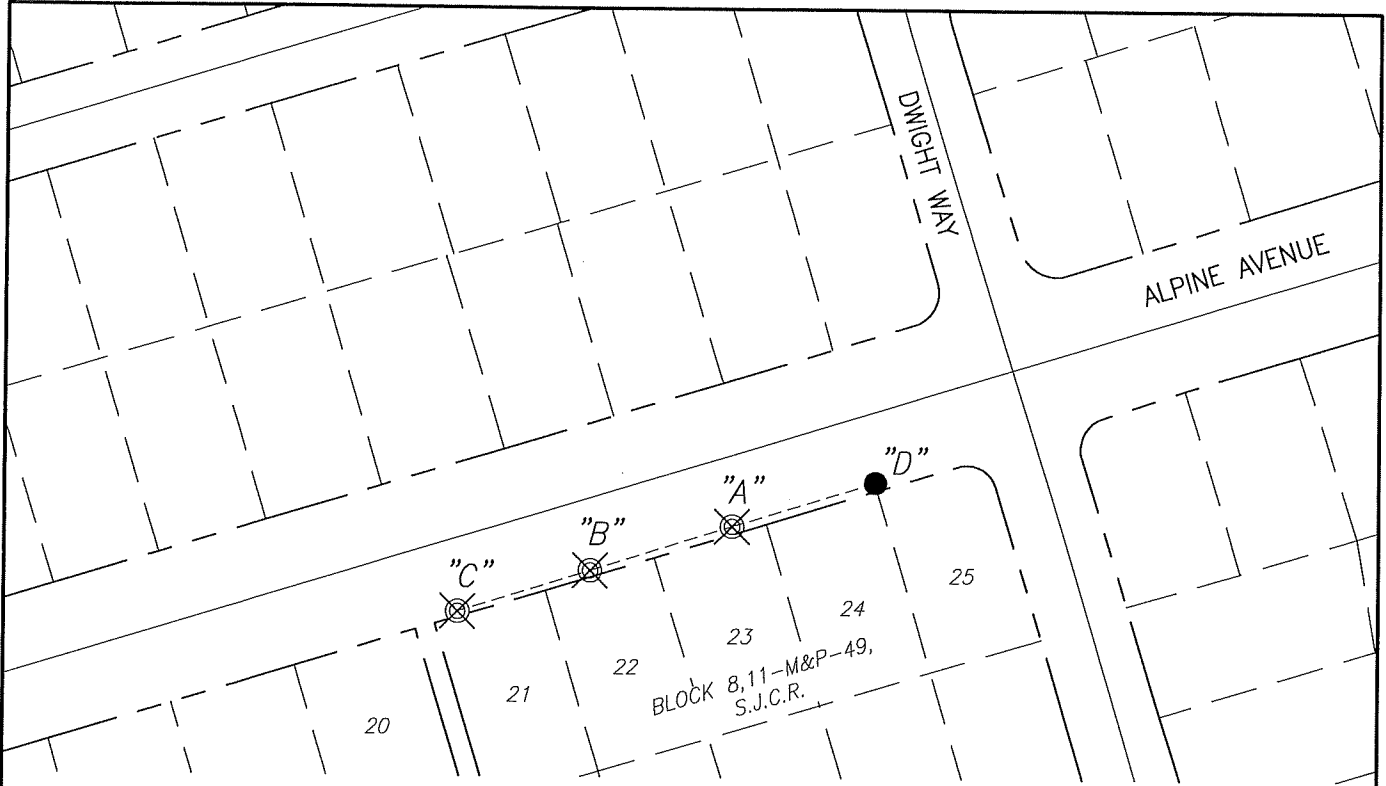
and examined and filed December 20, 2021

Signed James E. Hart P.L.S. or R.C.E. No: 8657

Title County Surveyor



County Surveyor's Comment \_\_\_\_\_



☿ AND DISTANCE TABLE		
BS-@-FS	☿	FS DISTANCE
C-A-B	00°00'00"	80.68'(M)
C-A-C	00°00'00"	156.34'(M)
C-A-D	180°26'38"	81.64'(M)



NOT TO SCALE

**LEGEND:**

- ☒ SET CONCRETE NAIL WITH BRASS TAG "L.S. 6953"
- FOUND CHISELED CROSS IN SIDEWALK
- S.J.C.R. SAN JOAQUIN COUNTY RECORDS
- M&P- MAPS & PLATS
- (M) MEASURED DISTANCE. ALL DISTANCES ARE MEASURED UNLESS NOTED OTHERWISE.