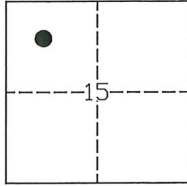


CORNER RECORD

Agency Index: CR-21-230
Document Number: _____
County of SAN JOAQUIN, California

City of STOCKTON
Brief Legal Description FOUND MONUMENTS ON TARANSAY COURT



T.2N, R.6E

CORNER TYPE

- Government Corner
- Meander
- Rancho
- Control
- Property
- Other

Date of Survey 09-27-2021

COORDINATES (Optional)

N. _____ E. _____
 Elevation _____
 Units Metric U.S. Survey Foot
 Horizontal Datum _____
 Zone _____ Epoch Date _____
 Vertical Datum _____
 Complies with Public Resources Code SS8801-8819
 Complies with Public Resources Code SS8890-8902

PLS Act Ref: 8765(d) 8771 8773 Other:

Corner/Monument: Left as found Established Rebuilt Pre-Construction
 Found and Tagged Reestablished Referenced Post-Construction

Narrative of corner identified and monument as found, set, reset, replaced, or removed:

See sheet #2 for description(s):

FOUND ONE (1) 3/4" IRON PIPE IN MONUMENT WELL WITH NO TAG AT THE CENTERLINE OF TARANSAY COURT; FOUND ONE (1) 3/4" IRON PIPE WITH NO TAG ON THE SOUTH SIDE OF TARANSAY COURT ALL AS SHOWN ON MAP FILED FOR RECORD IN VOLUME 19 OF MAPS AND PLATS, AT PAGE 36, S.J.C.R. SET TWO (2) MAG NAILS WITH BRASS WASHER STAMPED "L.S. 6953" ON TARANSAY COURT AS WITNESS CORNERS, ALL AS SHOWN ON PAGE 2.

SURVEYOR'S STATEMENT

This Corner Record was prepared by me or under my direction in conformance with the Land Surveyors' Act on OCTOBER 1, 2021,



Signed [Signature] P.L.S. or R.C.E. Number 6953

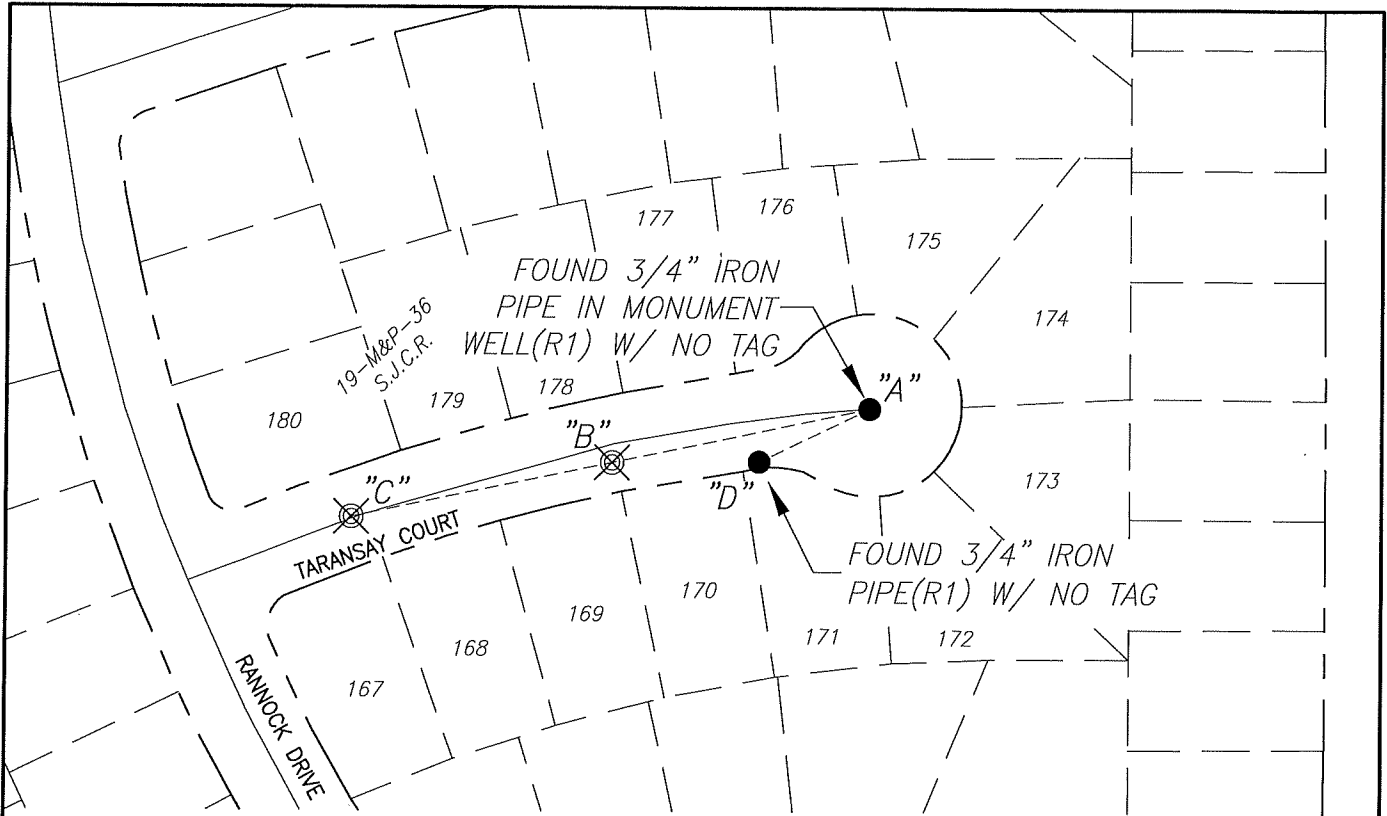
COUNTY SURVEYOR'S STATEMENT

This Corner Record was received October 28, 2021 and examined and filed November 18, 2021

Signed James E. Hart P.L.S. or R.C.E. No: 8657
Title County Surveyor



County Surveyor's Comment _____



X AND DISTANCE TABLE		
BS-@-FS	X	FS DISTANCE
C-A-B	00°00'00"	143.06'(M)
C-A-C	00°00'00"	288.29'(M)
C-A-D	342°59'30"	67.70'(M)



NOT TO SCALE

LEGEND:

- ⊗ SET MAG NAIL WITH BRASS WASHER STAMPED "L.S. 6953"
- FOUND MONUMENT AS NOTED.
- S.J.C.R. SAN JOAQUIN COUNTY RECORDS
- M&P- MAPS AND PLATS
- (M) MEASURED DISTANCE. ALL DISTANCES ARE MEASURED UNLESS NOTED OTHERWISE.

REFERENCE:

(R1) 19-M&P-36, S.J.C.R.