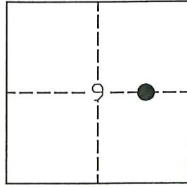


CORNER RECORD

Agency Index: CR-21-229
Document Number: _____

City of STOCKTON County of SAN JOAQUIN, California

Brief Legal Description FOUND MONUMENT AT THE INTERSECTION OF MORADA LANE AND EL DORADO STREET.



T.2N, R.6E

CORNER TYPE

- Government Corner
- Meander
- Rancho
- Control
- Property
- Other

Date of Survey 09-27-2021

COORDINATES (Optional)

N. _____ E. _____
 Elevation _____
 Units Metric U.S. Survey Foot
 Horizontal Datum _____
 Zone _____ Epoch Date _____
 Vertical Datum _____
 Complies with Public Resources Code SS8801-8819
 Complies with Public Resources Code SS8890-8902

PLS Act Ref: 8765(d) 8771 8773 Other:

Corner/Monument: Left as found Established Rebuilt Pre-Construction
 Found and Tagged Reestablished Referenced Post-Construction

Narrative of corner identified and monument as found, set, reset, replaced, or removed:

See sheet #2 for description(s):

FOUND ONE (1) 5/8" REBAR, NO TAG, WITH NO REFERENCE AT THE NORTHEAST CORNER OF THE
INTERSECTION OF MORADA LANE AND EL DORADO STREET. SET THREE (3) MAG NAILS WITH BRASS
WASHER STAMPED "L.S. 6953" AS WITNESS CORNERS, ALL AS SHOWN ON PAGE 2.

SURVEYOR'S STATEMENT

This Corner Record was prepared by me or under my direction in conformance with the Land Surveyors' Act on OCTOBER 1, 2021,



Signed [Signature] P.L.S. or R.C.E. Number 6953

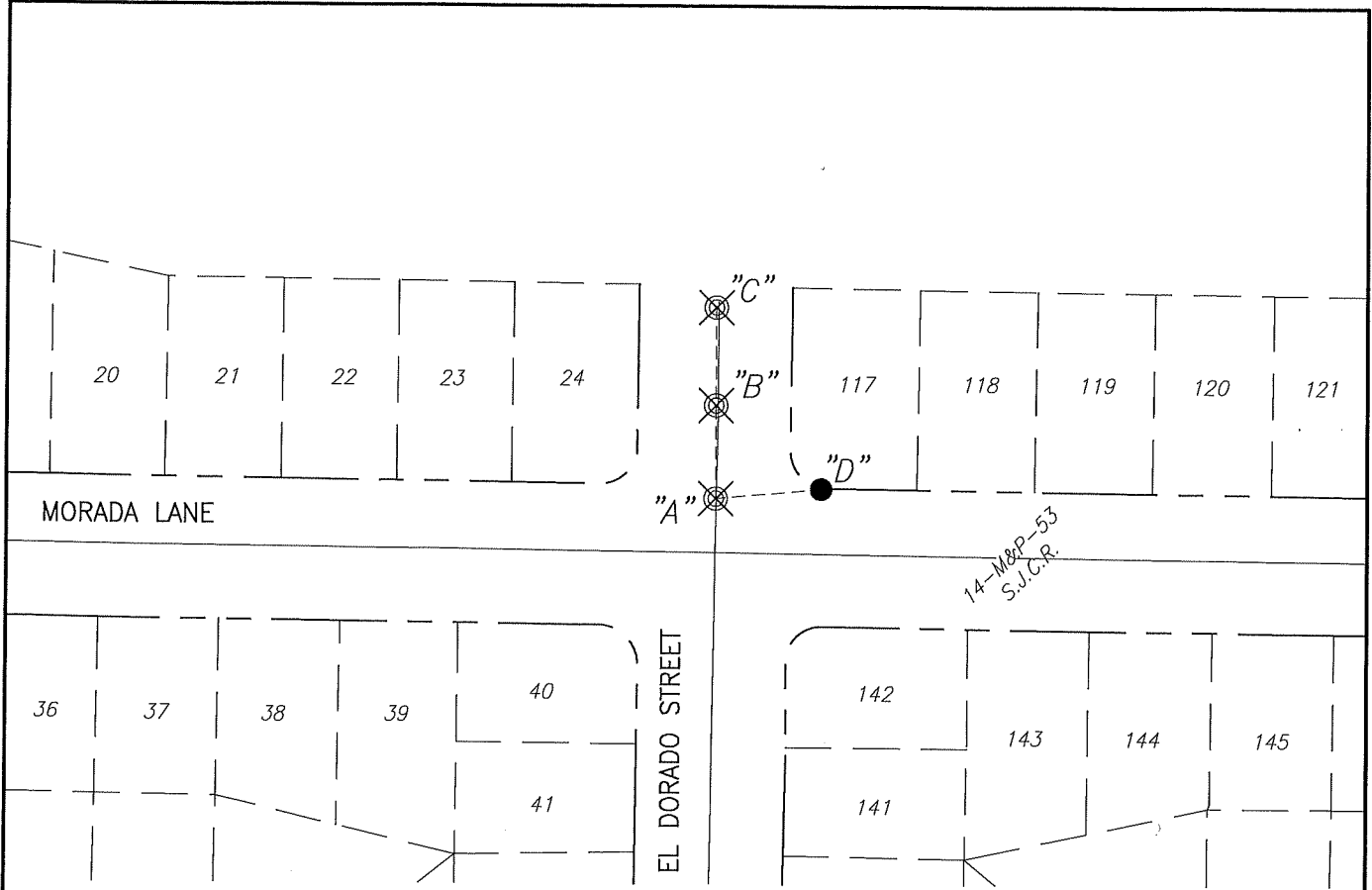
COUNTY SURVEYOR'S STATEMENT

This Corner Record was received December 6, 2021 and examined and filed December 20, 2021

Signed James E. Hart P.L.S. or R.C.E. No: 8657
Title County Surveyor



County Surveyor's Comment _____



X AND DISTANCE TABLE		
BS-@-FS	X	FS DISTANCE
C-A-B	00°00'00"	51.19'(M)
C-A-C	00°00'00"	105.08'(M)
C-A-D	78°48'10"	58.39'(M)



NOT TO SCALE

LEGEND:

- ⊗ SET CONCRETE NAIL WITH BRASS TAG "L.S. 6953"
- FOUND 5/8" REBAR, NO TAG
- S.J.C.R. SAN JOAQUIN COUNTY RECORDS
- M&P- MAPS & PLATS
- (M) MEASURED DISTANCE. ALL DISTANCES ARE MEASURED UNLESS NOTED OTHERWISE.