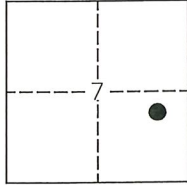


# CORNER RECORD

Agency Index: CR-21-228  
 Document Number: \_\_\_\_\_  
 City of STOCKTON County of SAN JOAQUIN, California

Brief Legal Description FOUND MONUMENT ON KIMBROUGH COURT



T.2N, R.6E

### CORNER TYPE

- Government Corner     Control  
 Meander                     Property  
 Rancho                         Other

Date of Survey 09-27-2021

### COORDINATES (Optional)

N. \_\_\_\_\_ E. \_\_\_\_\_  
 Elevation \_\_\_\_\_  
 Units  Metric  U.S. Survey Foot  
 Horizontal Datum \_\_\_\_\_  
 Zone \_\_\_\_\_ Epoch Date \_\_\_\_\_  
 Vertical Datum \_\_\_\_\_  
 Complies with Public Resources Code SS8801-8819  
 Complies with Public Resources Code SS8890-8902

PLS Act Ref:  8765(d)     8771     8773     Other:

Corner/Monument:  Left as found     Established     Rebuilt     Pre-Construction  
 Found and Tagged     Reestablished     Referenced     Post-Construction

Narrative of corner identified and monument as found, set, reset, replaced, or removed:

See sheet #2 for description(s):

FOUND ONE (1) CHISELED CROSS WITH NO REFERENCE AT THE SOUTH END OF THE CUL-DE-SAC AT  
KIMBROUGH COURT; FOUND TWO (2) 5/8" REBARS IN MONUMENT WELL ALONG THE CENTERLINE OF  
KIMBROUGH COURT. SET ONE (1) MAG NAIL WITH BRASS WASHER STAMPED "L.S. 6953" AS WITNESS  
CORNER, ALL AS SHOWN ON PAGE 2.

### SURVEYOR'S STATEMENT

This Corner Record was prepared by me or under my direction in conformance with the Land Surveyors' Act on OCTOBER 1, 2021,



Signed [Signature] P.L.S. or R.C.E. Number 6953

### COUNTY SURVEYOR'S STATEMENT

This Corner Record was received December 6, 2021

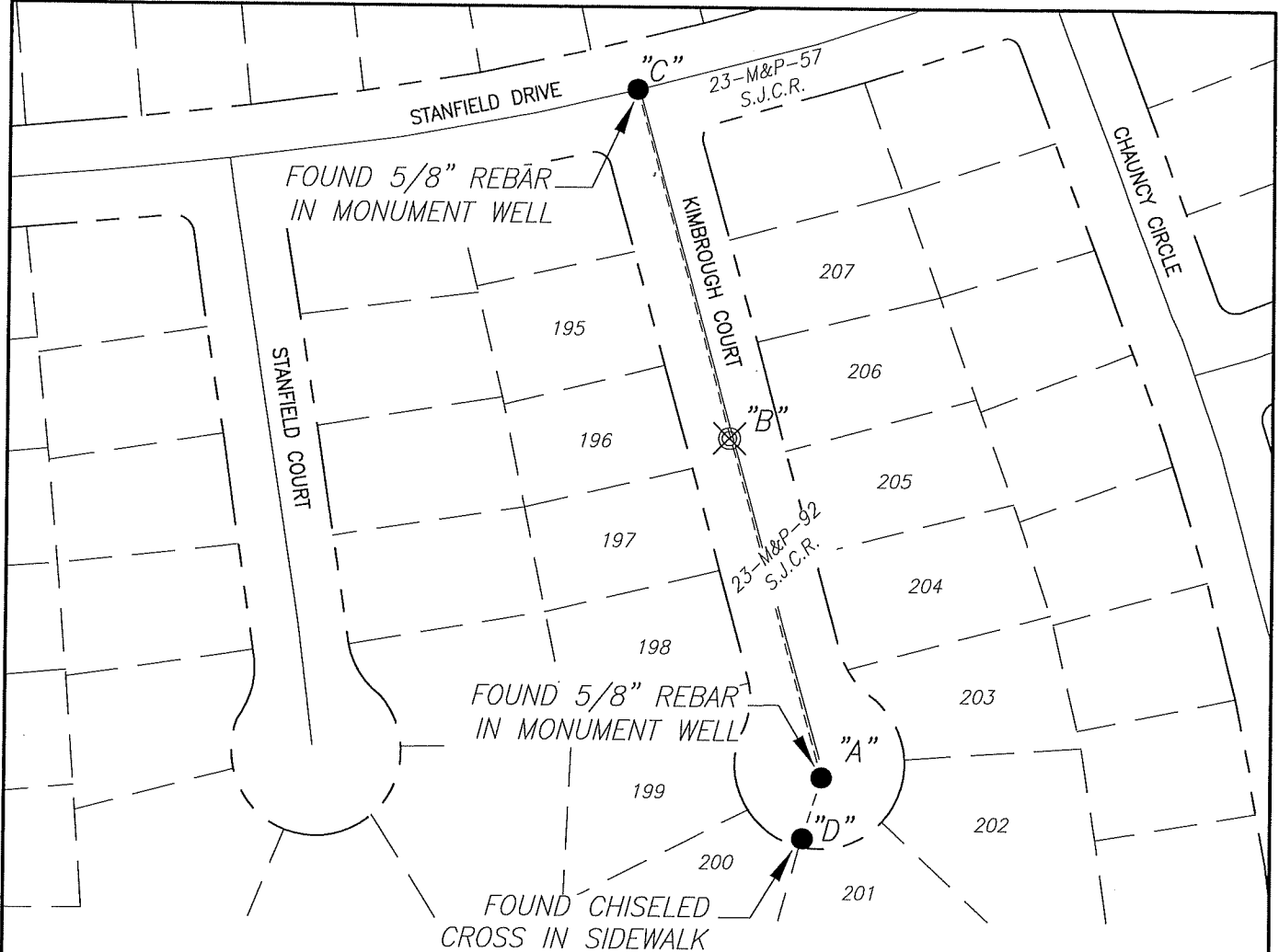
and examined and filed December 20, 2021

Signed James E. Hart P.L.S. or R.C.E. No: 8657

Title County Surveyor



County Surveyor's Comment \_\_\_\_\_



X AND DISTANCE TABLE		
BS-@-FS	X	FS DISTANCE
C-A-B	00°00'00"	208.24'(M)
C-A-C	00°00'00"	413.19'(M)
C-A-D	212°24'40"	42.00'(M)



NOT TO SCALE

**LEGEND:**

- ⊗ SET CONCRETE NAIL WITH BRASS TAG "L.S. 6953"
- FOUND MONUMENT AS NOTED
- S.J.C.R. SAN JOAQUIN COUNTY RECORDS
- M&P- MAPS & PLATS
- (M) MEASURED DISTANCE. ALL DISTANCES ARE MEASURED UNLESS NOTED OTHERWISE.