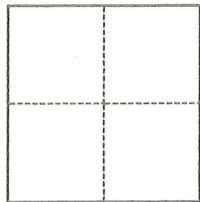


CORNER RECORD

Agency Index CR-21-213
Document Number _____

City of _____ County of San Joaquin, California
Brief Legal Description _____ Instrument No. 86035549 as shown on 31-R.S.-145, S.J.C.R.

CORNER TYPE



- Government Corner
- Meander
- Rancho
- Control
- Property
- Other

Date of Survey August 24, 2021

COORDINATES (Optional)

N. _____ E. _____
 Elevation _____
 Units Metric U.S. Survey Foot
 Horizontal Datum _____
 Zone _____ Epoch Date _____
 Vertical Datum _____
 Complies with Public Resources Code §§8801-8819
 Complies with Public Resources Code §§8890-8902

PLS Act Ref.: 8765(d) 8771 8773 Other:
 Corner/Monument: Left as found Established Rebuilt Pre-Construction
 Found and tagged Reestablished Referenced Post-Construction

Narrative of corner identified and monument as found, set, reset, replaced, or removed:
 See sheet #2 for description(s):

SURVEYOR'S STATEMENT

This Corner Record was prepared by me or under my direction in conformance with
 the Professional Land Surveyors' Act on November 5, 2021
 Signed _____ P.L.S. or R.C.E. No. 8080

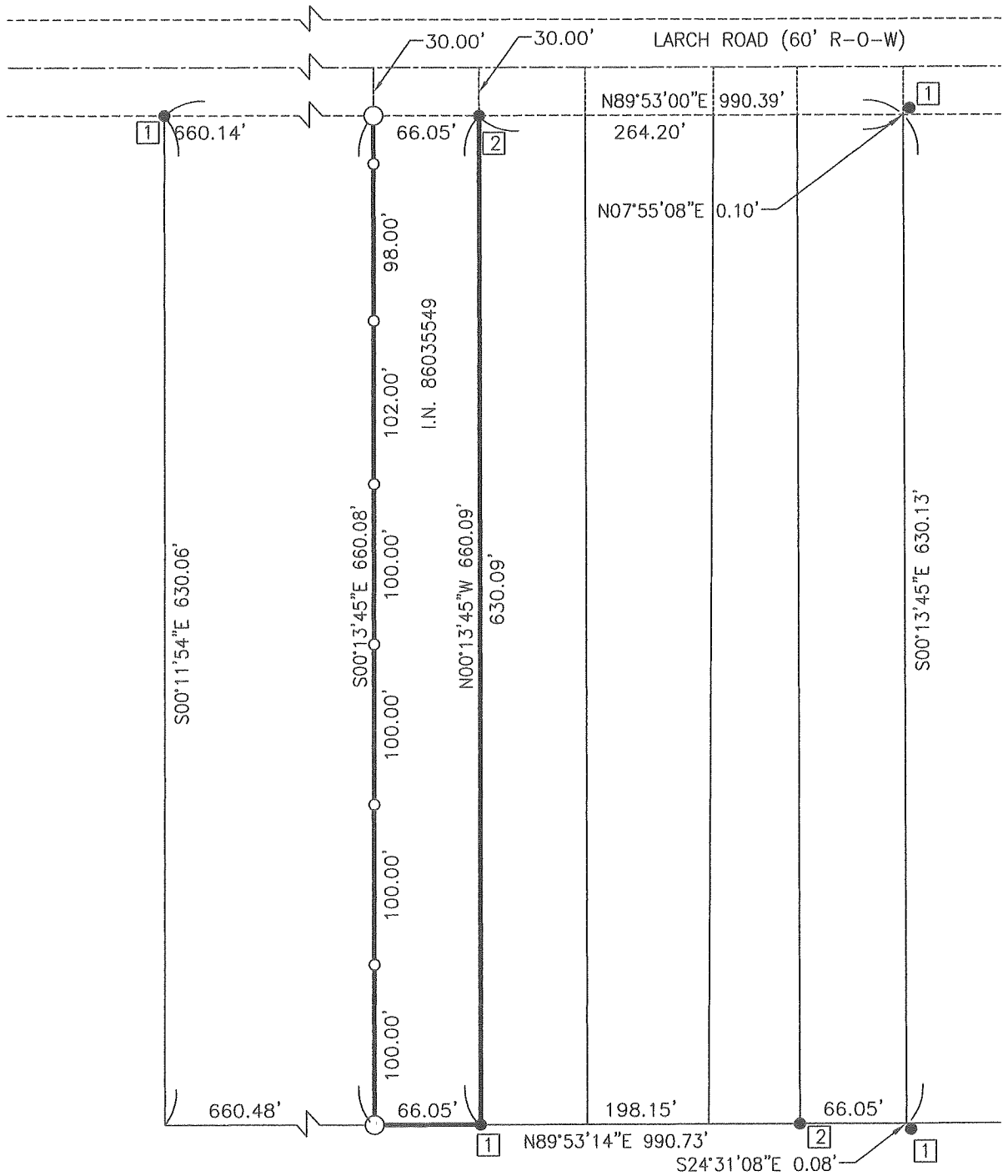


COUNTY SURVEYOR'S STATEMENT

This Corner Record was received November 16, 2021
 and examined and filed December 3, 2021
 Signed James E. Hart P.L.S. or R.C.E. No. 8657
 Title County Surveyor



County Surveyor's Comment _____



REFERENCE:
(R1) R.S. 31-145, S.J.C.R.

FOUND MONUMENT LEGEND:

- 1 3/4" IRON PIPE TAGGED R.C.E. 14901 PER (R1).
- 2 3/4" IRON PIPE TAGGED P.L.S. 4858 PER (R1).

LEGEND:

- S.J.C.R. SAN JOAQUIN COUNTY RECORDS
- R.S. RECORD OF SURVEY, BOOK - PAGE, S.J.C.R.
- I.N. INSTRUMENT NUMBER, S.J.C.R.
- R-O-W RIGHT OF WAY
- FOUND MONUMENT AS NOTED
- SET 3/4" BY 30" LONG REBAR WITH PLASTIC CAP STAMPED LS8080 UNLESS OTHERWISE SPECIFIED
- SET 1/2" BY 30" LONG REBAR WITH PLASTIC CAP STAMPED LS8080 UNLESS OTHERWISE SPECIFIED