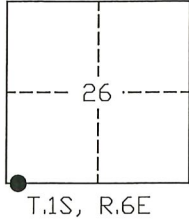


CORNER RECORD

Agency Index: CR-21-210
Document Number: _____
County of SAN JOAQUIN, California

City of LATHROP
Brief Legal Description MONUMENTS AT THE INTERSECTION OF LOUISE AVENUE AND BIZZIBE STREET



CORNER TYPE

- Government Corner
- Meander
- Rancho
- Control
- Property
- Other

Date of Survey 06-16-2021

COORDINATES (Optional)

N. _____ E. _____
 Elevation _____
 Units Metric U.S. Survey Foot
 Horizontal Datum _____
 Zone _____ Epoch Date _____
 Vertical Datum _____
 Complies with Public Resources Code SS8801-8819
 Complies with Public Resources Code SS8890-8902

PLS Act Ref: 8765(d) 8771 8773 Other:
 Corner/Monument: Left as found Established Rebuilt Pre-Construction
 Found and Tagged Reestablished Referenced Post-Construction

Narrative of corner identified and monument as found, set, reset, replaced, or removed:

See sheet #2 for description(s):

FOUND THREE (3) CONCRETE NAILS WITH BRASS TAG STAMPED "L.S. 6953" AS SHOWN ON CORNER RECORD NO. 21-014, S.J.C.S.R. SET TWO (2) 2 1/2" BRASS DISKS STAMPED "3-2021 L.S. 6953" IN MONUMENT WELLS AT THE INTERSECTION OF LOUISE AVENUE AND BIZZIBE STREET ALL AS SHOWN ON PAGE 2.

SURVEYOR'S STATEMENT

This Corner Record was prepared by me or under my direction in conformance with the Land Surveyors' Act on JUNE 28, 2021,



Signed [Signature] P.L.S. or R.C.E. Number 6953

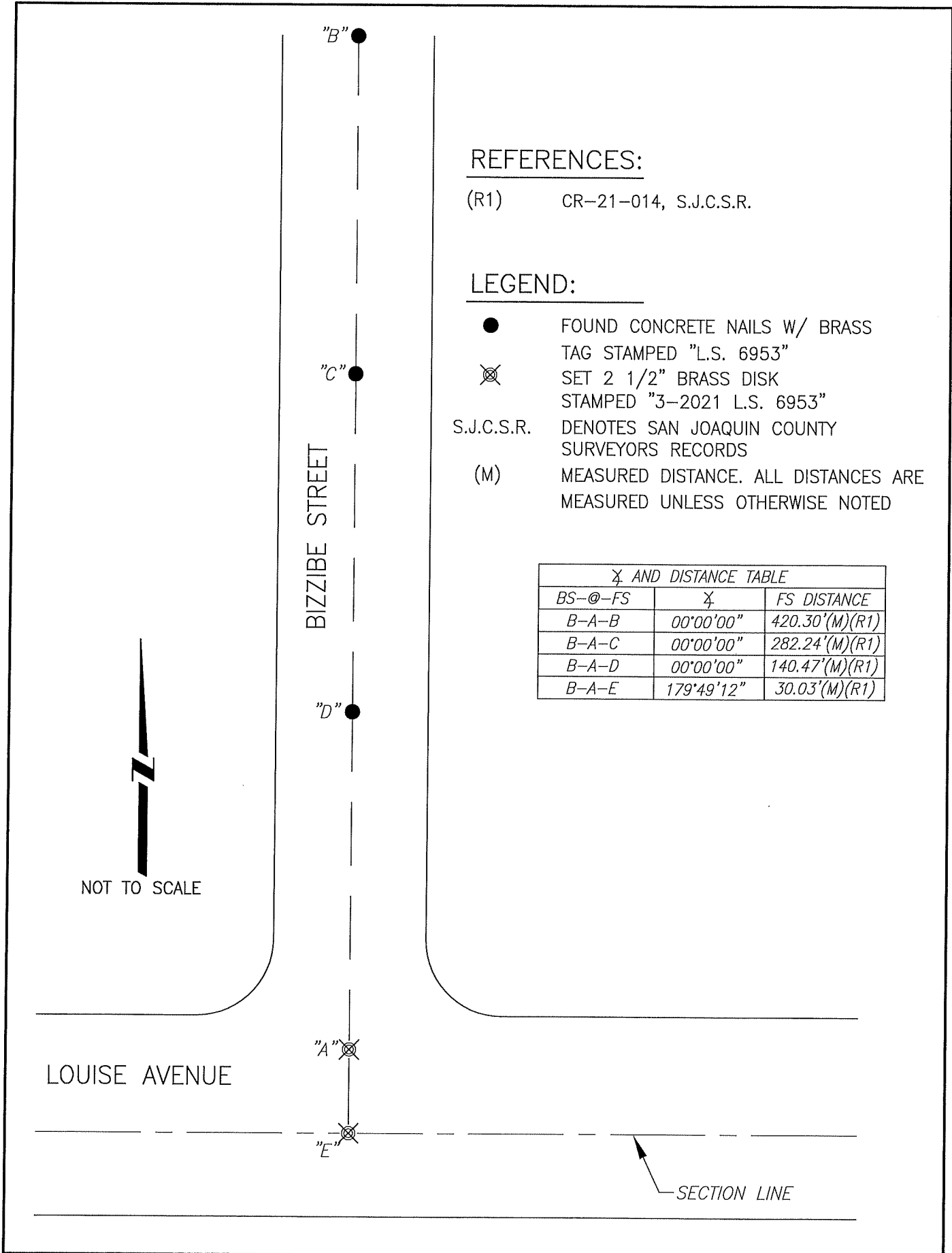
COUNTY SURVEYOR'S STATEMENT

This Corner Record was received October 14, 2021 and examined and filed November 4, 2021

Signed James E. Hart P.L.S. or R.C.E. No: 8657
Title County Surveyor



County Surveyor's Comment _____



REFERENCES:

(R1) CR-21-014, S.J.C.S.R.

LEGEND:

- FOUND CONCRETE NAILS W/ BRASS TAG STAMPED "L.S. 6953"
- ⊗ SET 2 1/2" BRASS DISK STAMPED "3-2021 L.S. 6953"
- S.J.C.S.R. DENOTES SAN JOAQUIN COUNTY SURVEYORS RECORDS
- (M) MEASURED DISTANCE. ALL DISTANCES ARE MEASURED UNLESS OTHERWISE NOTED

<i>⊗ AND DISTANCE TABLE</i>		
<i>BS-@-FS</i>	<i>⊗</i>	<i>FS DISTANCE</i>
<i>B-A-B</i>	<i>00°00'00"</i>	<i>420.30'(M)(R1)</i>
<i>B-A-C</i>	<i>00°00'00"</i>	<i>282.24'(M)(R1)</i>
<i>B-A-D</i>	<i>00°00'00"</i>	<i>140.47'(M)(R1)</i>
<i>B-A-E</i>	<i>179°49'12"</i>	<i>30.03'(M)(R1)</i>