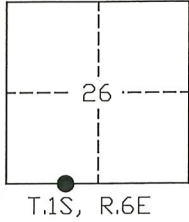


CORNER RECORD

Agency Index: CR-21-208
Document Number: _____
County of SAN JOAQUIN, California

City of LATHROP
Brief Legal Description MONUMENTS AT THE INTERSECTIONS OF LOUISE AVENUE AND CAMBRIDGE DRIVE AND CAMBRIDGE DRIVE AND LIBBY LANE



CORNER TYPE

- Government Corner
- Meander
- Rancho
- Control
- Property
- Other

Date of Survey 06-16-2021

COORDINATES (Optional)

N. _____ E. _____
 Elevation _____
 Units Metric U.S. Survey Foot
 Horizontal Datum _____
 Zone _____ Epoch Date _____
 Vertical Datum _____
 Complies with Public Resources Code SS8801-8819
 Complies with Public Resources Code SS8890-8902

- PLS Act Ref: 8765(d) 8771 8773 Other: _____
- Corner/
Monument: Left as found Established Rebuilt Pre-Construction
 Found and Tagged Reestablished Referenced Post-Construction

Narrative of corner identified and monument as found, set, reset, replaced, or removed:

See sheet #2 for description(s):

FOUND TWO (2) CONCRETE NAILS WITH BRASS TAG STAMPED "L.S. 6953" AND ONE (1) 3/4" REBAR, NO TAG, IN MONUMENT WELL AS SHOWN ON CORNER RECORD NO. 21-016, S.J.C.S.R. SET ONE (1) 2 1/2" BRASS DISK STAMPED "3-2021 L.S. 6953" IN MONUMENT WELL, ALL AS SHOWN ON PAGE 2.

SURVEYOR'S STATEMENT

This Corner Record was prepared by me or under my direction in conformance with the Land Surveyors' Act on NOVEMBER 5, 2021,

Signed [Signature] P.L.S. or R.C.E. Number 6953



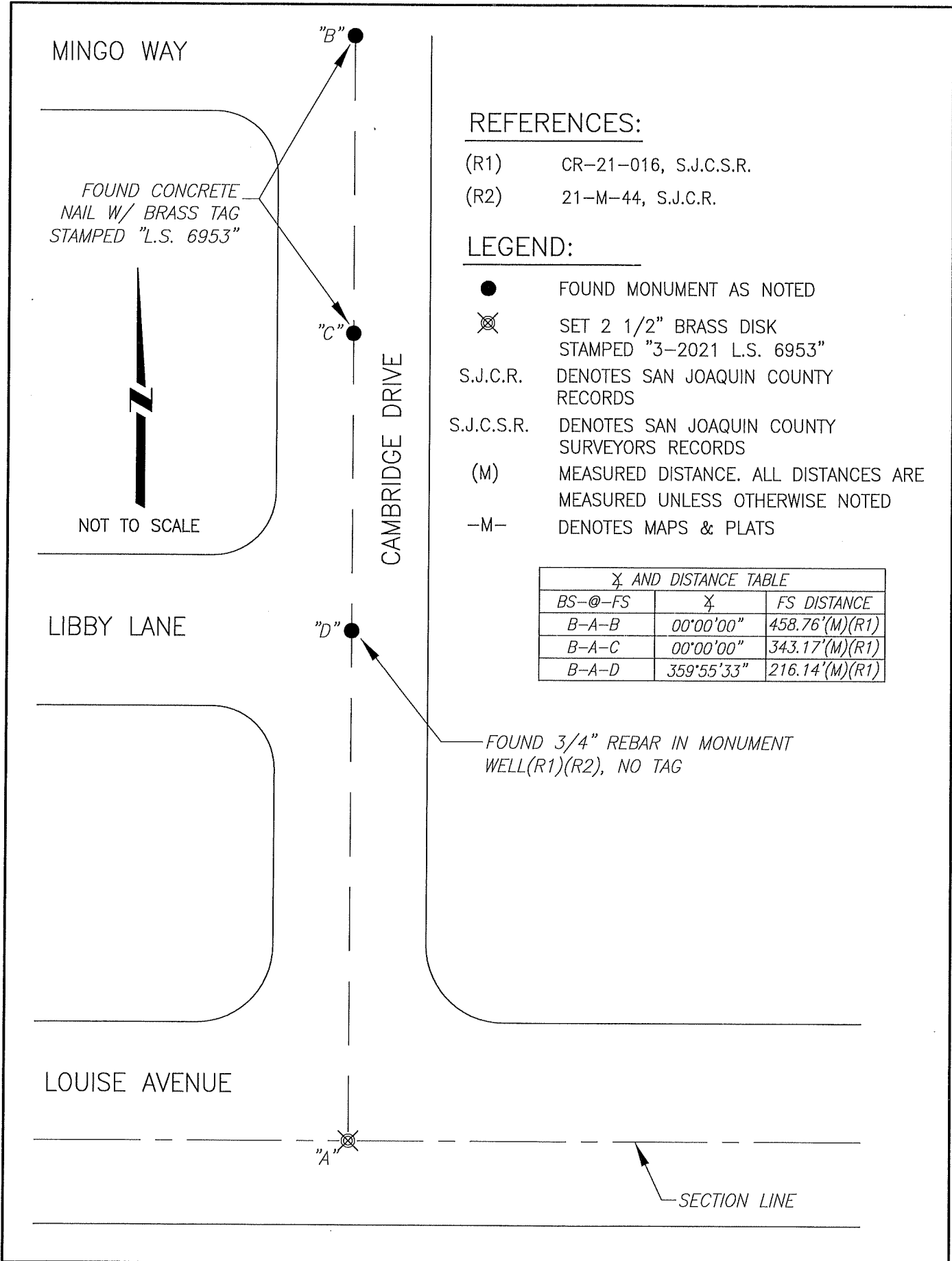
COUNTY SURVEYOR'S STATEMENT

This Corner Record was received November 12, 2021
and examined and filed December 3, 2021

Signed James E. Hart P.L.S. or R.C.E. No: 8657
Title County Surveyor



County Surveyor's Comment _____



REFERENCES:

- (R1) CR-21-016, S.J.C.S.R.
- (R2) 21-M-44, S.J.C.R.

LEGEND:

- FOUND MONUMENT AS NOTED
- ⊗ SET 2 1/2" BRASS DISK STAMPED "3-2021 L.S. 6953"
- S.J.C.R. DENOTES SAN JOAQUIN COUNTY RECORDS
- S.J.C.S.R. DENOTES SAN JOAQUIN COUNTY SURVEYORS RECORDS
- (M) MEASURED DISTANCE. ALL DISTANCES ARE MEASURED UNLESS OTHERWISE NOTED
- M- DENOTES MAPS & PLATS

<u>∠ AND DISTANCE TABLE</u>		
<i>BS-@-FS</i>	<i>∠</i>	<i>FS DISTANCE</i>
<i>B-A-B</i>	<i>00°00'00"</i>	<i>458.76'(M)(R1)</i>
<i>B-A-C</i>	<i>00°00'00"</i>	<i>343.17'(M)(R1)</i>
<i>B-A-D</i>	<i>359°55'33"</i>	<i>216.14'(M)(R1)</i>