

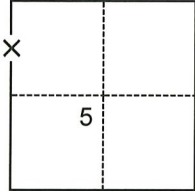
CORNER RECORD

Agency Index CR-21-191
Document Number _____

City of STOCKTON County of SAN JOAQUIN, California
Brief Legal Description TRACT NO.3452, SILVER SPRINGS; S.5,T.2N,R.6E.

CORNER TYPE

COORDINATES (Optional)



- Government Corner
- Meander
- Rancho
- Control
- Property
- Other

Date of Survey April 14, 2021

N. _____ E. _____

Elevation _____

Units Metric U.S. Survey Foot

Horizontal Datum _____

Zone _____ Epoch Date _____

Vertical Datum _____

Complies with Public Resources Code §§8801-8819

Complies with Public Resources Code §§8890-8902

PLS Act Ref.: 8765(d) 8771 8773 Other:

Corner/Monument: Left as found Established Rebuilt Pre-Construction

Found and tagged Reestablished Referenced Post-Construction

Narrative of corner identified and monument as found, set, reset, replaced, or removed:

See sheet #2 for description(s):

FOUND 3/4" IRON PIN TAGGED RCE 15831 IN MONUMENT WELL AT INTERSECTION OF THORNTON RD AND A.G. SPANOS BLVD.

SURVEYOR'S STATEMENT

This Corner Record was prepared by me or under my direction in conformance with the Professional Land Surveyors' Act on 9/7/2021

Signed [Signature] P.L.S. or R.C.E. No. 8513



COUNTY SURVEYOR'S STATEMENT

This Corner Record was received October 4, 2021

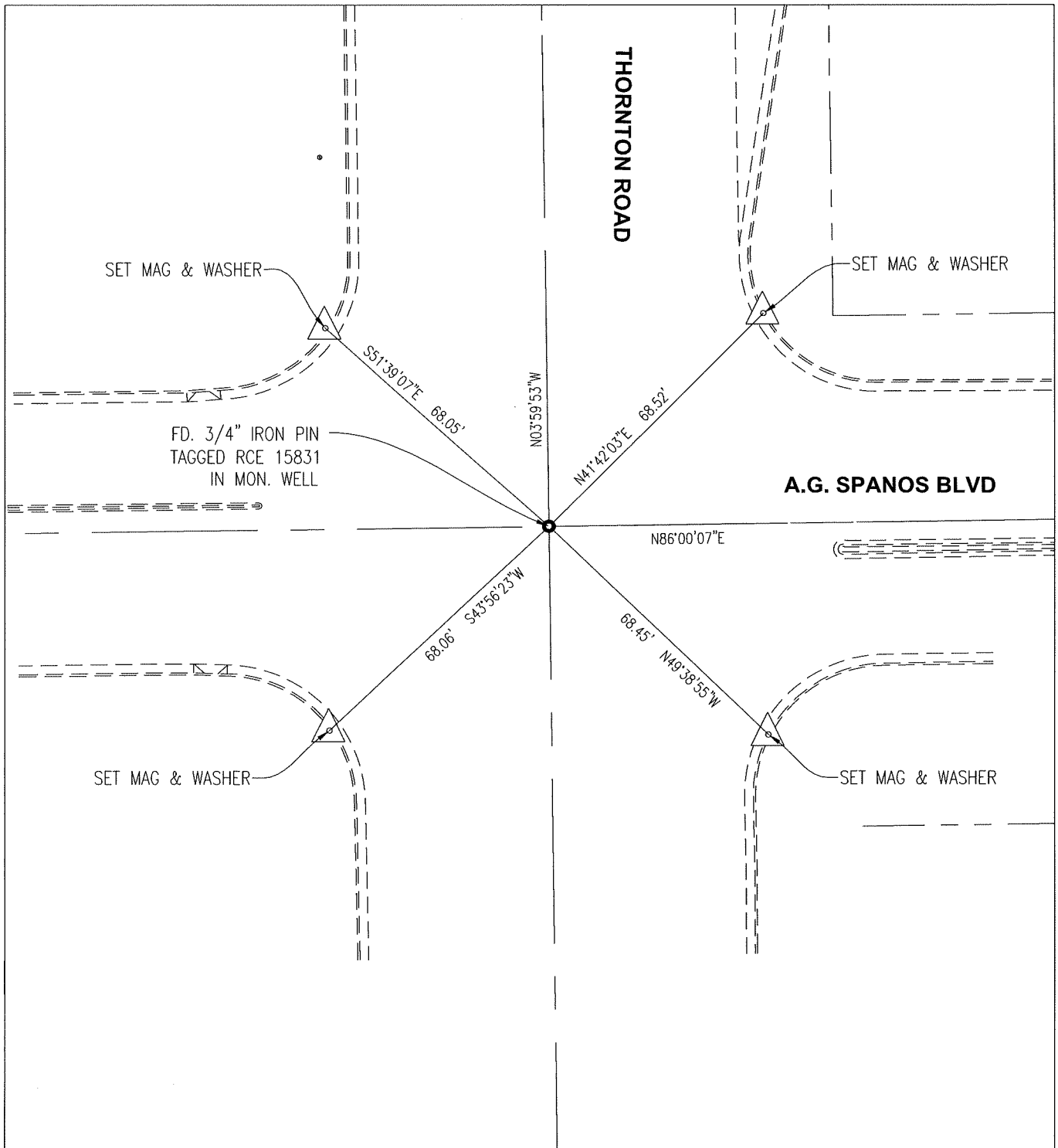
and examined and filed October 12, 2021

Signed James E. Hart P.L.S. or R.C.E. No. 8657

Title County Surveyor

County Surveyor's Comment





LEGEND:



FOUND STANDARD STREET MONUMENT WELL (AS NOTED)



SET MAG & WASHER STAMPED "PLS 8513"



CENTER LINE

N.T.S.



STATEMENT OF PURPOSE:

THE PURPOSE OF THIS SURVEY IS TO RECORD THE LOCATION WITH THE PURPOSE OF PRESERVATION.

REFERENCES:

(R1) TRACT NO. 3452 BOOK 40 PAGE 39B OF MAPS AND PLATS.