

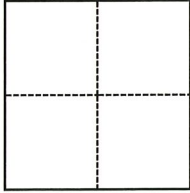
# CORNER RECORD

Agency Index CR-21-183  
Document Number \_\_\_\_\_

City of Manteca County of San Joaquin, California  
Brief Legal Description North half (N 1/2) Section 31, T.1S., R.7E., M.D.B. & M.

### CORNER TYPE

### COORDINATES (Optional)



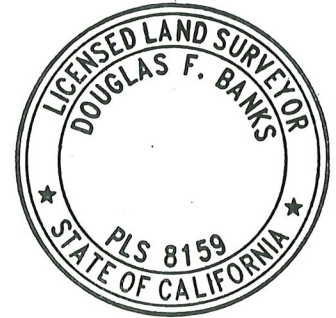
- Government Corner
- Meander
- Rancho
- Control
- Property
- Other

Date of Survey March 12, 2021

N. \_\_\_\_\_ E. \_\_\_\_\_  
 Elevation \_\_\_\_\_  
 Units  Metric  U.S. Survey Foot  
 Horizontal Datum \_\_\_\_\_  
 Zone \_\_\_\_\_ Epoch Date \_\_\_\_\_  
 Vertical Datum \_\_\_\_\_  
 Complies with Public Resources Code §§8801-8819  
 Complies with Public Resources Code §§8890-8902

- PLS Act Ref.:  8765(d)  8771  8773  Other:
- Corner/Monument:  Left as found  Established  Rebuilt  Pre-Construction  
 Found and tagged  Reestablished  Referenced  Post-Construction

Narrative of corner identified and monument as found, set, reset, replaced, or removed:  
 See sheet #2 for description(s):



### SURVEYOR'S STATEMENT

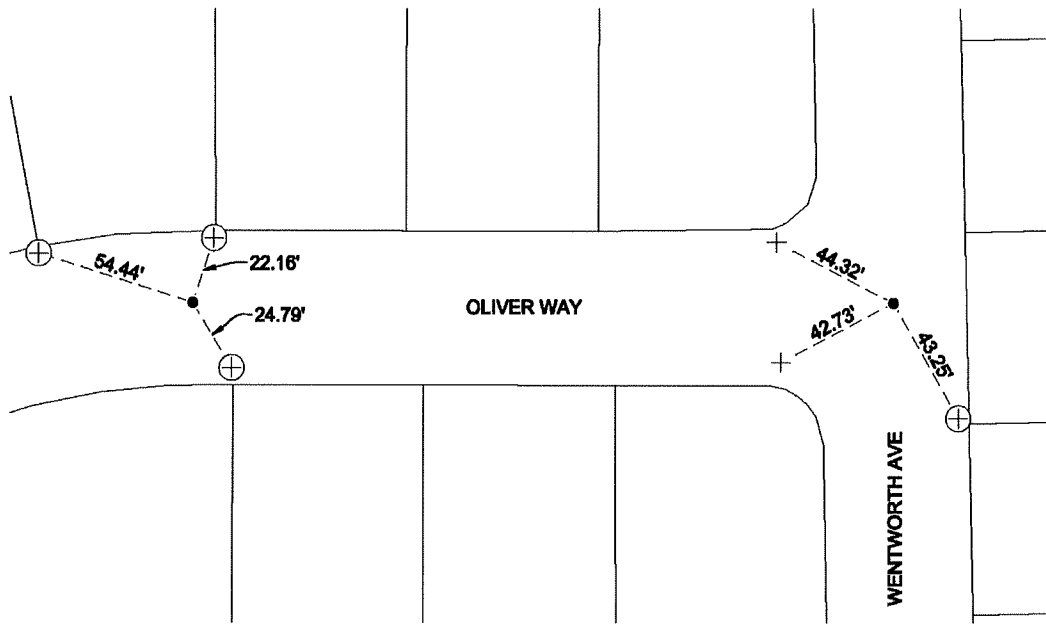
This Corner Record was prepared by me or under my direction in conformance with  
 the Professional Land Surveyors' Act on August 19, 2021  
 Signed Douglas F. Banks P.L.S. or R.C.E. No. 8159

### COUNTY SURVEYOR'S STATEMENT

This Corner Record was received September 29, 2021  
 and examined and filed October 8, 2021  
 Signed James E. Hart P.L.S. or R.C.E. No. 8657  
 Title County Surveyor



County Surveyor's Comment



**NOTES:**

- FOUND MONUMENT: 3/4" REBAR STAMPED R.C.E. 14269 IN MONUMENT WELL, PER M&P 26-97 UNLESS OTHERWISE NOTED.
  - + SET SAWCUT "+" IN CONCRETE ON TOP OF CURB
  - ⊕ FOUND SAWCUT "+" ON SIDEWALK
- M&P MAP AND PLATS, SAN JOAQUIN COUNTY RECORDS



**NOT TO SCALE**