

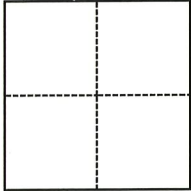
CORNER RECORD

Agency Index CR-21-179
Document Number _____

City of Manteca County of San Joaquin, California
Brief Legal Description North half (N 1/2) Section 31, T.1S., R.7E., M.D.B. & M.

CORNER TYPE

COORDINATES (Optional)



- Government Corner
- Meander
- Rancho
- Control
- Property
- Other

Date of Survey March 12, 2021

N. _____ E. _____
 Elevation _____
 Units Metric U.S. Survey Foot
 Horizontal Datum _____
 Zone _____ Epoch Date _____
 Vertical Datum _____
 Complies with Public Resources Code §§8801-8819
 Complies with Public Resources Code §§8890-8902

PLS Act Ref.: 8765(d) 8771 8773 Other:
 Corner/Monument: Left as found Established Rebuilt Pre-Construction
 Found and tagged Reestablished Referenced Post-Construction

Narrative of corner identified and monument as found, set, reset, replaced, or removed:
 See sheet #2 for description(s):



SURVEYOR'S STATEMENT

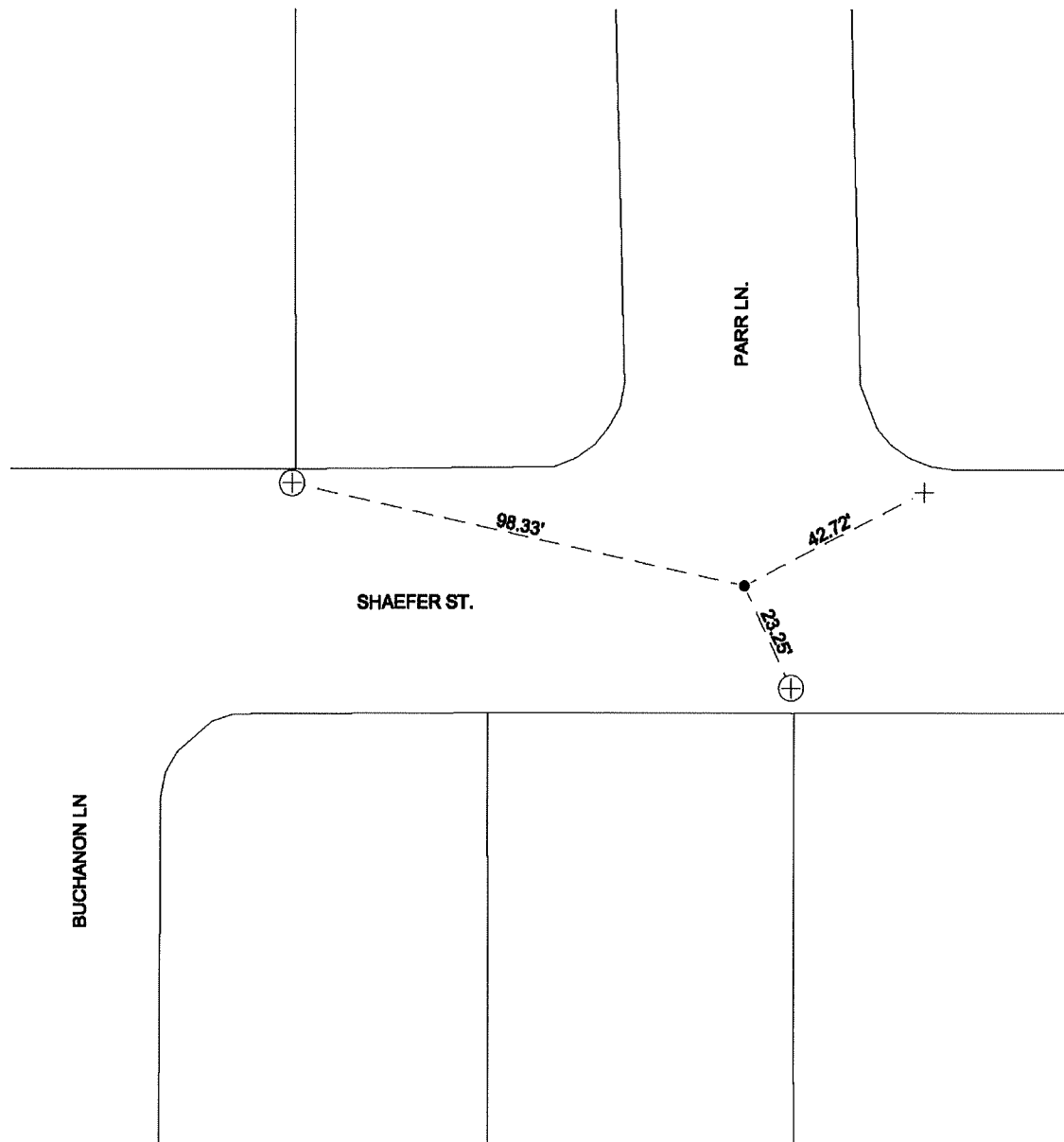
This Corner Record was prepared by me or under my direction in conformance with
 the Professional Land Surveyors' Act on August 19, 2021
 Signed Douglas F. Banks P.L.S. or R.C.E. No. 8159

COUNTY SURVEYOR'S STATEMENT

This Corner Record was received September 29, 2021
 and examined and filed October 8, 2021
 Signed James E. Hart P.L.S. or R.C.E. No. 8657
 Title County Surveyor



County Surveyor's Comment



NOTES:

- FOUND MONUMENT: 3/4" REBAR STAMPED R.C.E. 14269 IN MONUMENT WELL, PER M&P 26-97 UNLESS OTHERWISE NOTED.
 - + SET SAWCUT "+" IN CONCRETE ON TOP OF CURB
 - ⊕ FOUND SAWCUT "+" ON SIDEWALK
- M&P MAP AND PLATS, SAN JOAQUIN COUNTY RECORDS



NOT TO SCALE