

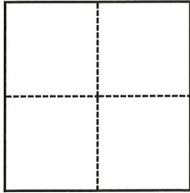
# CORNER RECORD

Agency Index CR-21-178  
 Document Number \_\_\_\_\_

City of Manteca County of San Joaquin, California  
 Brief Legal Description North half (N 1/2) Section 31, T.1S., R.7E., M.D.B. & M.

### CORNER TYPE

### COORDINATES (Optional)



- Government Corner     Control  
 Meander                     Property  
 Rancho                         Other

N. \_\_\_\_\_ E. \_\_\_\_\_  
 Elevation \_\_\_\_\_  
 Units     Metric             U.S. Survey Foot  
 Horizontal Datum \_\_\_\_\_  
 Zone \_\_\_\_\_ Epoch Date \_\_\_\_\_  
 Vertical Datum \_\_\_\_\_  
 Complies with Public Resources Code §§8801-8819  
 Complies with Public Resources Code §§8890-8902

Date of Survey March 12, 2021

- PLS Act Ref.:**     8765(d)             8771             8773             Other:  
**Corner/ Monument:**     Left as found             Established             Rebuilt             Pre-Construction  
                                    Found and tagged             Reestablished             Referenced             Post-Construction

Narrative of corner identified and monument as found, set, reset, replaced, or removed:  
 See sheet #2 for description(s):

### SURVEYOR'S STATEMENT

This Corner Record was prepared by me or under my direction in conformance with  
 the Professional Land Surveyors' Act on August 19, 2021

Signed Douglas F. Banks P.L.S. or R.C.E. No. 8159



### COUNTY SURVEYOR'S STATEMENT

This Corner Record was received September 29, 2021

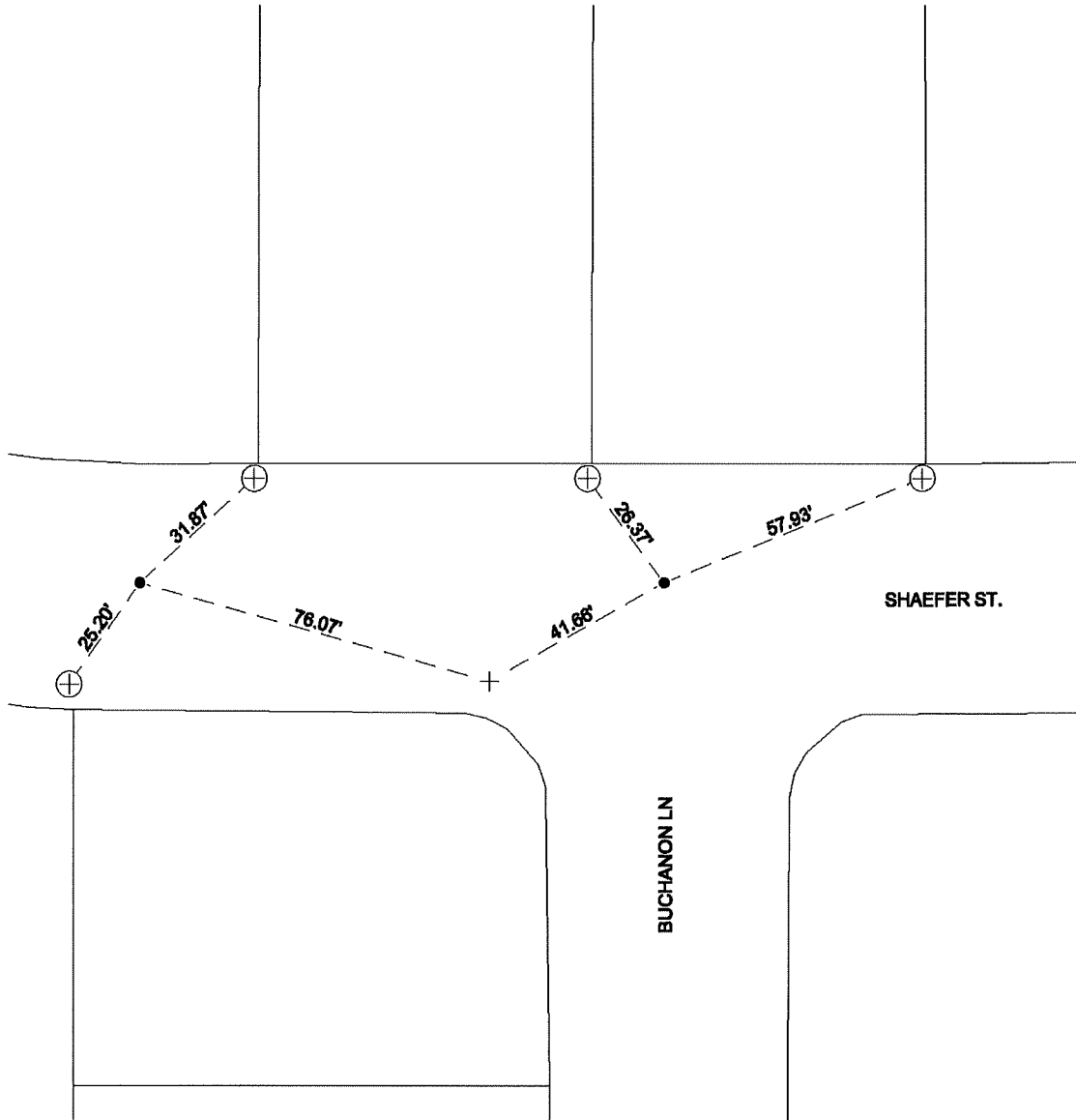
and examined and filed October 8, 2021

Signed James E. Hart P.L.S. or R.C.E. No. 8657

Title County Surveyor

County Surveyor's Comment





**NOTES:**

- FOUND MONUMENT: 3/4" REBAR STAMPED R.C.E. 14269 IN MONUMENT WELL, PER M&P 26-97 UNLESS OTHERWISE NOTED.
  - + SET SAWCUT "+" IN CONCRETE ON TOP OF CURB
  - ⊕ FOUND SAWCUT "+" ON SIDEWALK
- M&P MAP AND PLATS, SAN JOAQUIN COUNTY RECORDS



**NOT TO SCALE**