

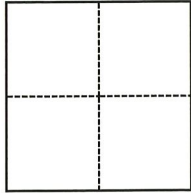
# CORNER RECORD

Agency Index CR-21-173  
Document Number \_\_\_\_\_

City of Manteca County of San Joaquin, California  
Brief Legal Description North half (N 1/2) Section 31, T.1S., R.7E., M.D.B. & M.

### CORNER TYPE

### COORDINATES (Optional)



- Government Corner
- Meander
- Rancho
- Control
- Property
- Other

Date of Survey March 12, 2021

N. \_\_\_\_\_ E. \_\_\_\_\_

Elevation \_\_\_\_\_

Units  Metric  U.S. Survey Foot

Horizontal Datum \_\_\_\_\_

Zone \_\_\_\_\_ Epoch Date \_\_\_\_\_

Vertical Datum \_\_\_\_\_

Complies with Public Resources Code §§8801-8819

Complies with Public Resources Code §§8890-8902

PLS Act Ref.:  8765(d)  8771  8773  Other:

Corner/Monument:  Left as found  Established  Rebuilt  Pre-Construction  
 Found and tagged  Reestablished  Referenced  Post-Construction

Narrative of corner identified and monument as found, set, reset, replaced, or removed:

See sheet #2 for description(s):



### SURVEYOR'S STATEMENT

This Corner Record was prepared by me or under my direction in conformance with  
the Professional Land Surveyors' Act on August 19, 2021.

Signed Douglas F. Banks P.L.S. or R.C.E. No. 8159

### COUNTY SURVEYOR'S STATEMENT

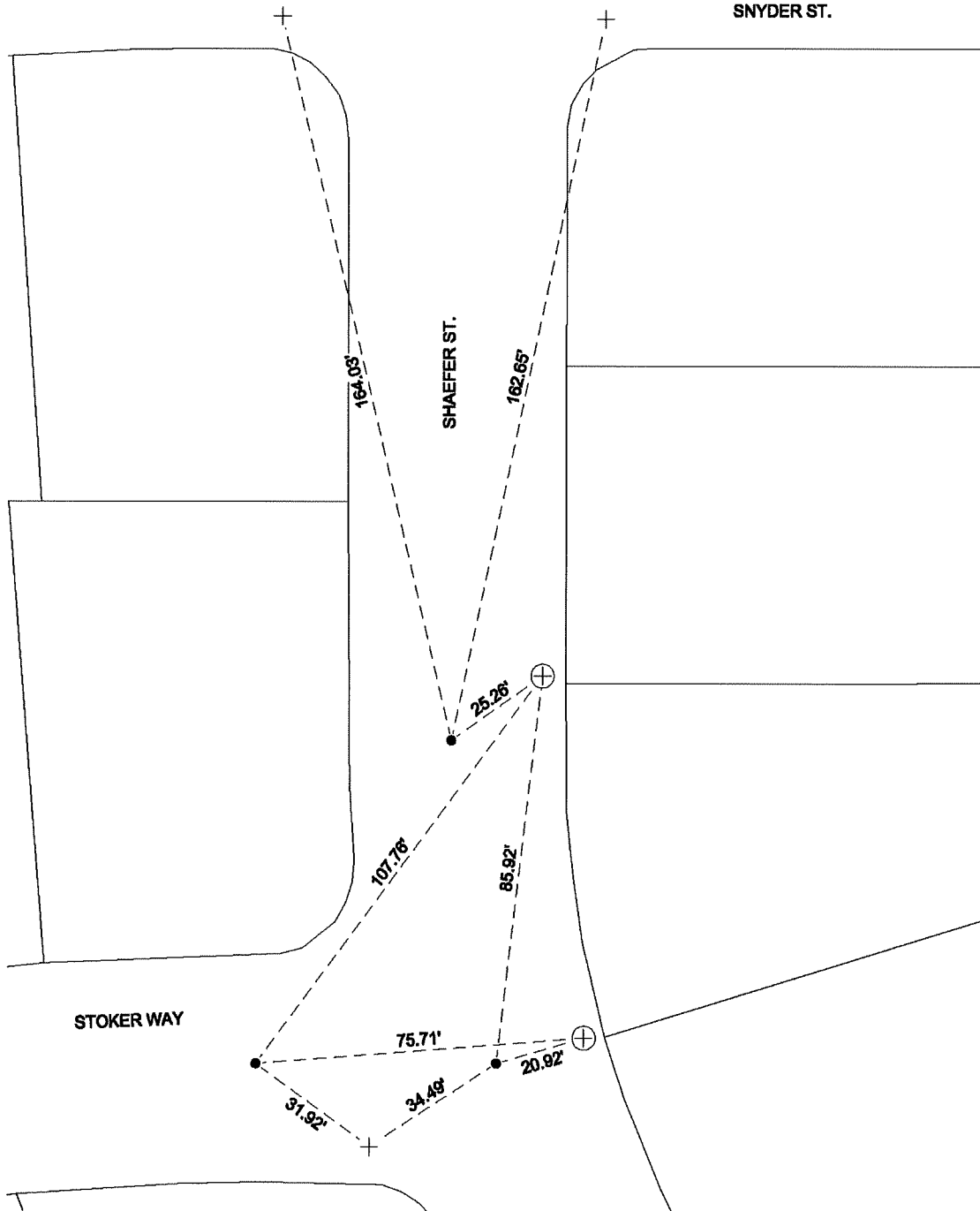
This Corner Record was received September 29, 2021  
and examined and filed October 8, 2021.

Signed James E. Hart P.L.S. or R.C.E. No. 8657

Title County Surveyor

County Surveyor's Comment





NOTES:

- FOUND MONUMENT: 3/4" REBAR STAMPED R.C.E. 14269 IN MONUMENT WELL, PER M&P 26-98 UNLESS OTHERWISE NOTED.
  - + SET SAWCUT "+" IN CONCRETE ON TOP OF CURB
  - ⊕ FOUND SAWCUT "+" ON SIDEWALK
- M&P MAP AND PLATS, SAN JOAQUIN COUNTY RECORDS



NOT TO SCALE