

# CORNER RECORD

Agency Index CR-21-119

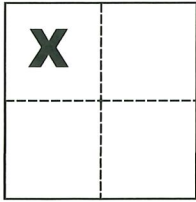
Document Number \_\_\_\_\_

City of \_\_\_\_\_ County of San Joaquin, California

Brief Legal Description Southwesterly corner of Parcel "A" per P.M. 13-24, S.J.C.R.

### CORNER TYPE

### COORDINATES (Optional)



Government Corner  Control   
Meander  Property   
Rancho  Other

N. \_\_\_\_\_ E. \_\_\_\_\_  
Elevation \_\_\_\_\_  
Units Metric  U.S. Survey Foot   
Horizontal Datum \_\_\_\_\_  
Zone \_\_\_\_\_ Epoch Date \_\_\_\_\_  
Vertical Datum \_\_\_\_\_

Date of Survey September 8, 2021

Complies with Public Resources Code §§8801-8819  
 Complies with Public Resources Code §§8890-8902

Sec. 34, T.4N., R.6E.,  
M.D.B. & M.

PLS Act Ref.:  8765(d)  8771  8773  Other:  
Corner/Monument:  Left as found  Established  Rebuilt  Pre-Construction  
 Found and tagged  Reestablished  Referenced  Post-Construction

Narrative of corner identified and monument as found, set, reset, replaced, or removed:

See sheet #2 for description(s):

### SURVEYOR'S STATEMENT

This Corner Record was prepared by me or under my direction in conformance with

the Professional Land Surveyors' Act on Sept. 9, 2021

Signed Michael L. Quartararo P.L.S. or R.C.E. No. L.S. 4450



### COUNTY SURVEYOR'S STATEMENT

This Corner Record was received September 24, 2021

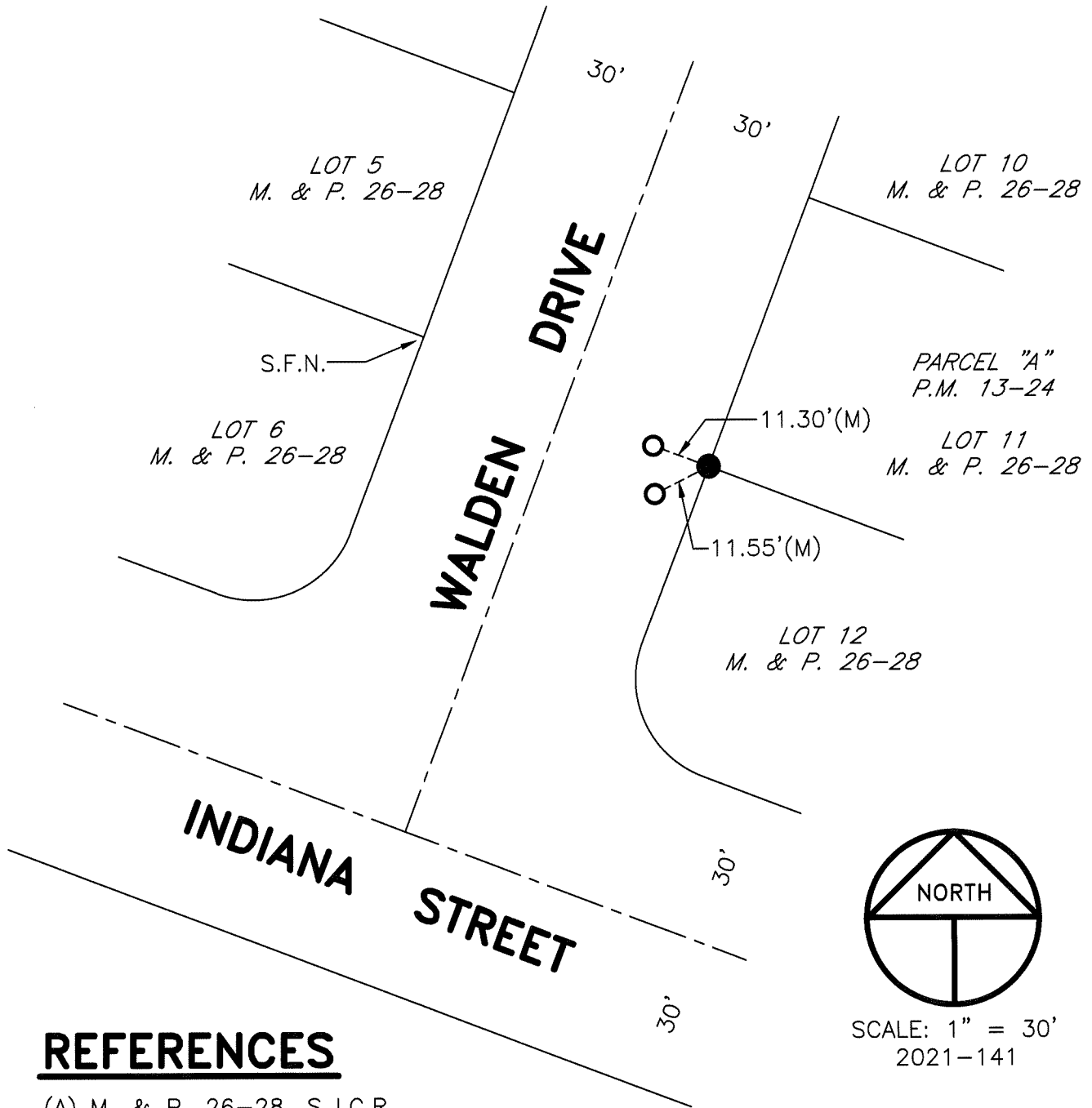
and examined and filed October 7, 2021

Signed James E. Hart P.L.S. or R.C.E. No. 8657

Title County Surveyor

County Surveyor's Comment





**REFERENCES**

- (A) M. & P. 26-28, S.J.C.R.
- (B) P.M. 13-24, S.J.C.R.

**LEGEND**

- INDICATES FOUND 5/8" IRON PIN PER (A)(B)
- INDICATES SET CONCRETE NAIL AND TAG STAMPED LS 4450
- M. & P. INDICATES MAPS AND PLATS, VOLUME AND PAGE, S.J.C.R.
- P.M. INDICATES PARCEL MAP, BOOK AND PAGE, S.J.C.R.
- S.J.C.R. INDICATES SAN JOAQUIN COUNTY RECORDS
- (M) INDICATES MEASURED ON THIS SURVEY
- S.F.N. INDICATES SEARCH FOUND NOTHING