

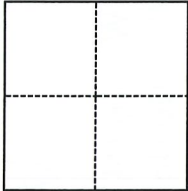
CORNER RECORD

Agency Index CR-21-168
Document Number _____

City of _____ County of San Joaquin, California
Brief Legal Description 28 RS 54

CORNER TYPE

COORDINATES (Optional)



- Government Corner
- Meander
- Rancho
- Control
- Property
- Other

N. _____ E. _____

Elevation _____

Units Metric U.S. Survey Foot

Horizontal Datum _____

Zone _____ Epoch Date _____

Vertical Datum _____

Complies with Public Resources Code §§8801-8819

Complies with Public Resources Code §§8890-8902

Date of Survey September 16, 2018

PLS Act Ref.: 8765(d) 8771 8773 Other:

Corner/
Monument: Left as found Established Rebuilt Pre-Construction
 Found and tagged Reestablished Referenced Post-Construction

Narrative of corner identified and monument as found, set, reset, replaced, or removed:

See sheet #2 for description(s):

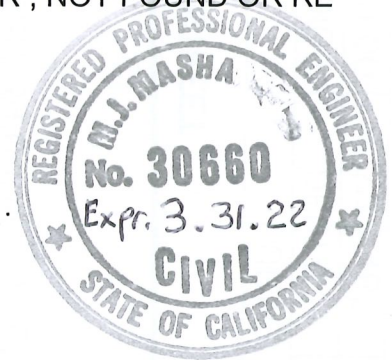
MOST SOUTHERLY AND EASTERLY CORNERS OF 28 RS 54 FOUND AND REFERENCED AS SHOWN ON SHEET 2.
OTHER CORNERS SHOWN ON THIS MAP, 28 RS 54, SEARCHED FOR, NOT FOUND OR RE ESTABLISHED,

SURVEYOR'S STATEMENT

This Corner Record was prepared by me or under my direction in conformance with

the Professional Land Surveyors' Act on September 8, 2021

Signed *M. J. Nasha* P.L.S. or R.C.E. No. 30660



COUNTY SURVEYOR'S STATEMENT

This Corner Record was received October 4, 2021

and examined and filed October 5, 2021

Signed *James E. Hart* P.L.S. or R.C.E. No. 8657

Title County Surveyor

County Surveyor's Comment



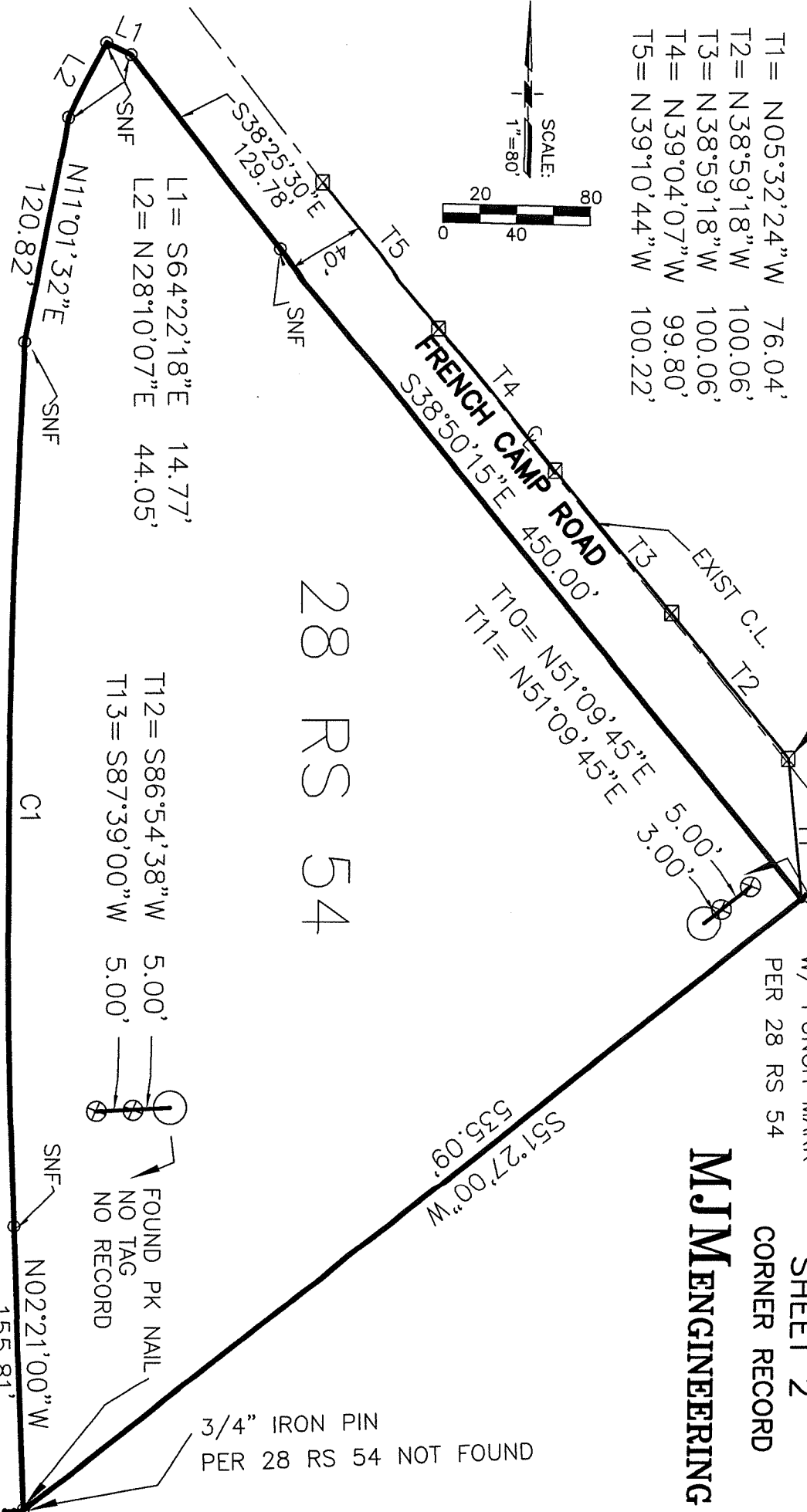
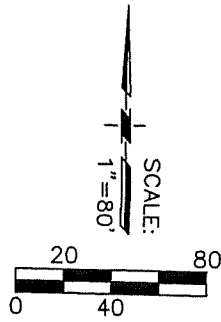
- T1 = N05°32'24" W 76.04'
- T2 = N38°59'18" W 100.06'
- T3 = N38°59'18" W 100.06'
- T4 = N39°04'07" W 99.80'
- T5 = N39°10'44" W 100.22'

FOUND NAIL & WASHER
NO TAG (TYP)

FOUND RR SPIKE
W/ PUNCH MARK
PER 28 RS 54

SHEET 2
CORNER RECORD

MJM ENGINEERING



28 RS 54

LEGEND

- RS = RECORD OF SURVEY
- SNF = SEARCHED, FOUND NOTHING
- ⊗ = SET PK NAIL TIES

EL DORADO STREET

CURVE TABLE

CURVE	RADIUS	DELTA	LENGTH	BEARING	DIST.
C1	4950.00'	05°32'46"	479.15'	S00°34'22" W	478.96'