

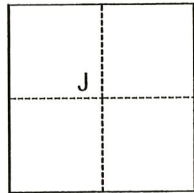
CORNER RECORD

Agency Index CR-21-167
Document Number _____

City of _____ County of San Joaquin, California
Brief Legal Description A.P.N. - 089-030-29, Parcel 2 of P.M. 15-133, S.J.C.R.

CORNER TYPE

COORDINATES (Optional)



- Government Corner
- Meander
- Rancho
- Control
- Property
- Other

Date of Survey August 3, 2021

N. _____ E. _____
 Elevation _____
 Units Metric U.S. Survey Foot
 Horizontal Datum _____
 Zone _____ Epoch Date _____
 Vertical Datum _____
 Complies with Public Resources Code §§8801-8819
 Complies with Public Resources Code §§8890-8902

C.M.WEBER GRANT

PLS Act Ref.: 8765(d) 8771 8773 Other:
 Corner/Monument: Left as found Established Rebuilt Pre-Construction
 Found and tagged Reestablished Referenced Post-Construction

Narrative of corner identified and monument as found, set, reset, replaced, or removed:
 See sheet #2 for description(s):

SURVEYOR'S STATEMENT

This Corner Record was prepared by me or under my direction in conformance with
 the Professional Land Surveyors' Act on September 23, 2021
 Signed *Joe Murphy* (P.L.S.) or R.C.E. No. 7269



COUNTY SURVEYOR'S STATEMENT

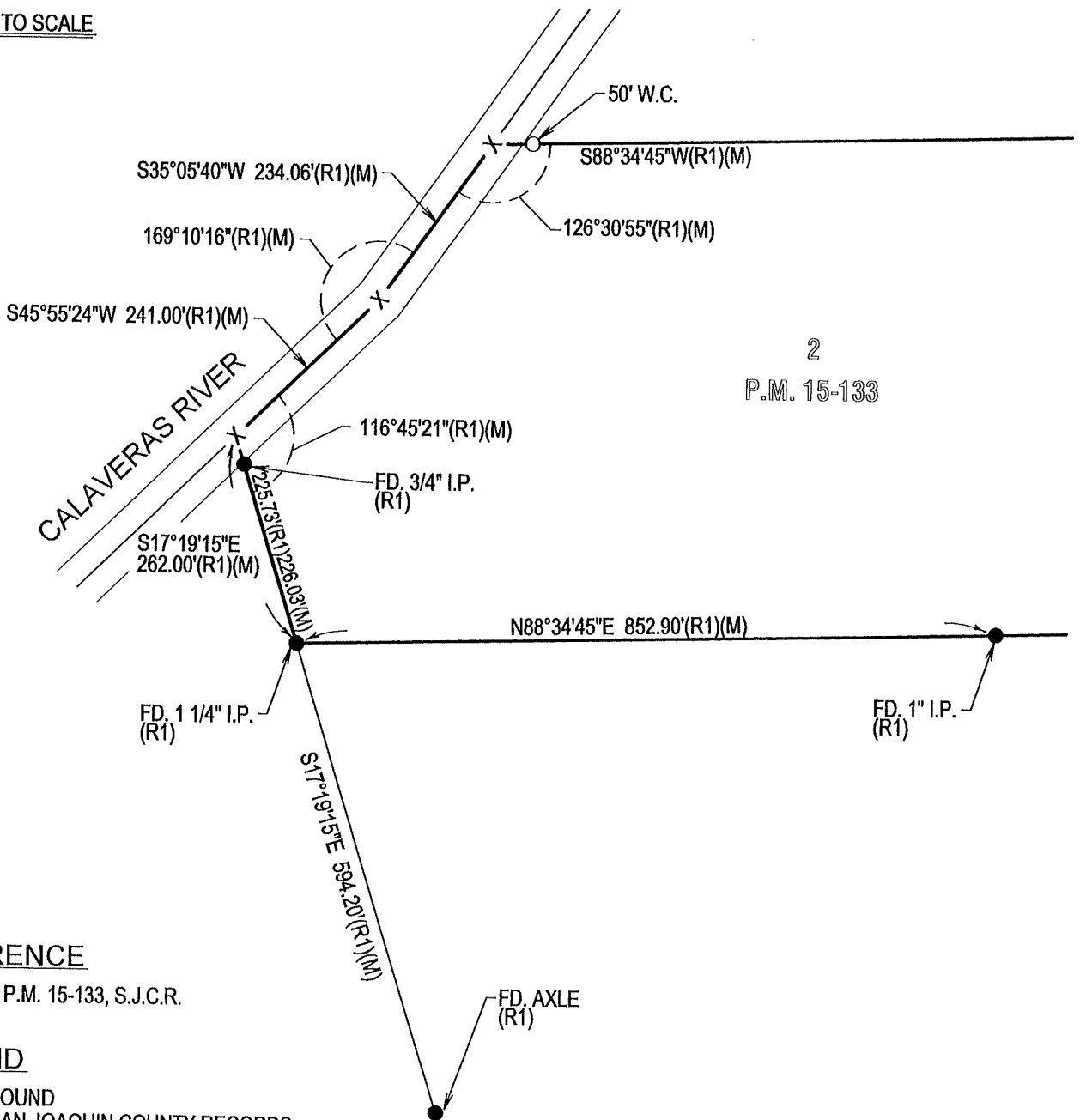
This Corner Record was received September 28, 2021
 and examined and filed October 5, 2021
 Signed *James E. Hart* P.L.S. or R.C.E. No. 8657
 Title County Surveyor



County Surveyor's Comment



SCALE: NOT TO SCALE



2
P.M. 15-133

REFERENCE

(R1) P.M. 15-133, S.J.C.R.

LEGEND

- FD. FOUND
- S.J.C.R. SAN JOAQUIN COUNTY RECORDS
- P.M. PARCEL MAPS
- (M) MEASURED
- I.R. IRON ROD
- I.P. IRON PIPE
- W.C. WITNESS CORNER

- SET 3/4" X 30" IRON ROD
CAPPED "L.S. 7269" OR AS NOTED
- FOUND MONUMENT
AS NOTED
- X— DIMENSION POINT, NOTHING FOUND
OR SET