

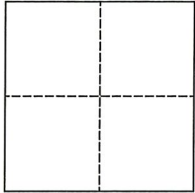
# CORNER RECORD

Agency Index CR-21-165  
 Document Number \_\_\_\_\_

City of \_\_\_\_\_ County of San Joaquin, California  
 Brief Legal Description Wilcox Road 185'± s/o north end  
Within Sec. 52, C.M. Weber Grant

**CORNER TYPE**

**COORDINATES (Optional)**



Government Corner  Control   
 Meander  Property   
 Rancho  Other

N. \_\_\_\_\_ E. \_\_\_\_\_

Elevation. \_\_\_\_\_

Units Metric  U.S. Survey Foot

Horizontal Datum \_\_\_\_\_

Zone \_\_\_\_\_ Epoch Date \_\_\_\_\_

Vertical Datum \_\_\_\_\_

Date of Survey July 23, 2021

Complies with Public Resources Code §§8801-8819

Complies with Public Resources Code §§8890-8902

PLS Act Ref.:  8765(d)  8771  8773  Other:

Corner/Monument:  Left as found  Established  Rebuilt  Pre-Construction  
 Found and tagged  Reestablished  Referenced  Post-Construction

Narrative of corner identified and monument as found, set, reset, replaced, or removed:

See sheet #2 for description(s):

**SURVEYOR'S STATEMENT**

This Corner Record was prepared by me or under my direction in conformance with  
 the Professional Land Surveyor's Act on July 24, 2021

Signed James E Hart P.L.S. or R.C.E. No. 8657



**COUNTY SURVEYOR'S STATEMENT**

This Corner Record was received September 13, 2021

and examined and filed September 29, 2021

Signed James E Hart P.L.S. or R.C.E. No. 8657

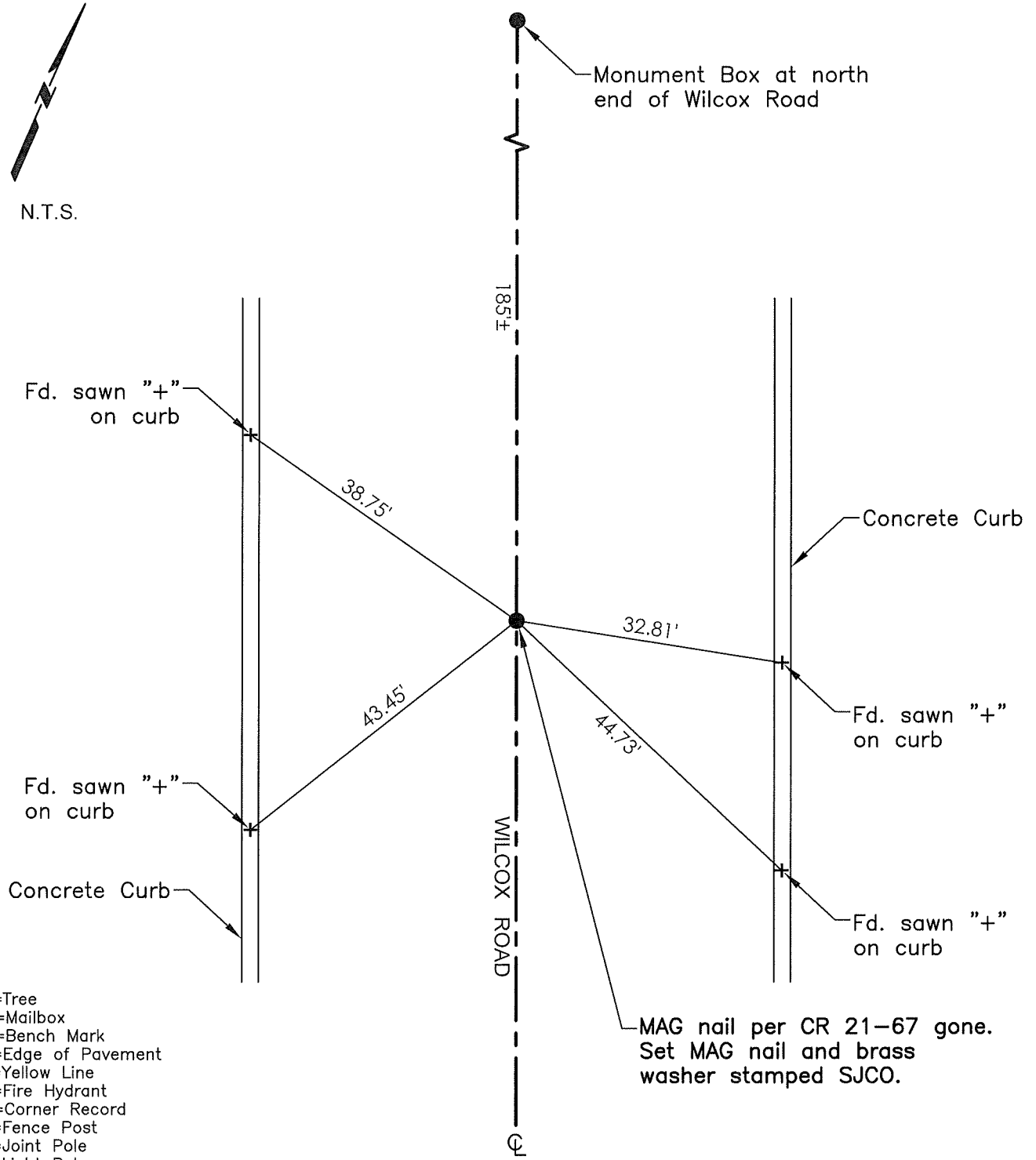
Title County Surveyor



**County Surveyor's Comment**



N.T.S.



- TR=Tree
- MB=Mailbox
- BM=Bench Mark
- EP=Edge of Pavement
- YL=Yellow Line
- FH=Fire Hydrant
- CR=Corner Record
- FP=Fence Post
- JP=Joint Pole
- LP=Light Pole
- PP=Power Pole
- GP=Guy Pole
- SP=Service Pole
- TP=Telephone Pole
- S.F.N.=Searched Found Nothing
- N.T.S.=Not To Scale
- M&P=Maps & Plats
- PM=Parcel Map
- RS=Record of Survey
- FB=Field Book
- N=North
- SDI=Storm Drain Inlet
- TOC=Top of Curb
- PCC=Portland Cement Concrete

MAG nail per CR 21-67 gone.  
 Set MAG nail and brass washer stamped SJCO.

Set=Conc. Nail with Brass Washer stamped "S.J. Co.", unless otherwise noted  
 Fd.=Found Conc. Nail with Brass Washer stamped "S.J. Co.", unless otherwise noted  
 Note: Found Monuments are not tagged unless otherwise noted.

"No attempt was made to verify the Monument(s)"