

# CORNER RECORD

Agency Index

CR-21-152

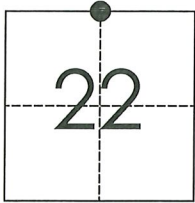
Document Number

City of \_\_\_\_\_ County of San Joaquin, California

Brief Legal Description Peltier Road 2630± east of Bruella Road

### CORNER TYPE

### COORDINATES (Optional)



T4N R7E  
MDB&M

Government Corner  Control   
Meander  Property   
Rancho  Other

Date of Survey February 8, 2021

N. \_\_\_\_\_ E. \_\_\_\_\_

Elevation. \_\_\_\_\_

Units Metric  U.S. Survey Foot

Horizontal Datum \_\_\_\_\_

Zone \_\_\_\_\_ Epoch Date \_\_\_\_\_

Vertical Datum \_\_\_\_\_

Complies with Public Resources Code §§8801-8819

Complies with Public Resources Code §§8890-8902

PLS Act Ref.:  8765(d)  8771  8773  Other:

Corner/Monument:  Left as found  Established  Rebuilt  Pre-Construction

Found and tagged  Reestablished  Referenced  Post-Construction

Narrative of corner identified and monument as found, set, reset, replaced, or removed:

See sheet #2 for description(s):

### SURVEYOR'S STATEMENT

This Corner Record was prepared by me or under my direction in conformance with

the Professional Land Surveyor's Act on June 4, 2021

Signed James E. Hart P.L.S. or R.C.E. No. 8657



### COUNTY SURVEYOR'S STATEMENT

This Corner Record was received September 13, 2021

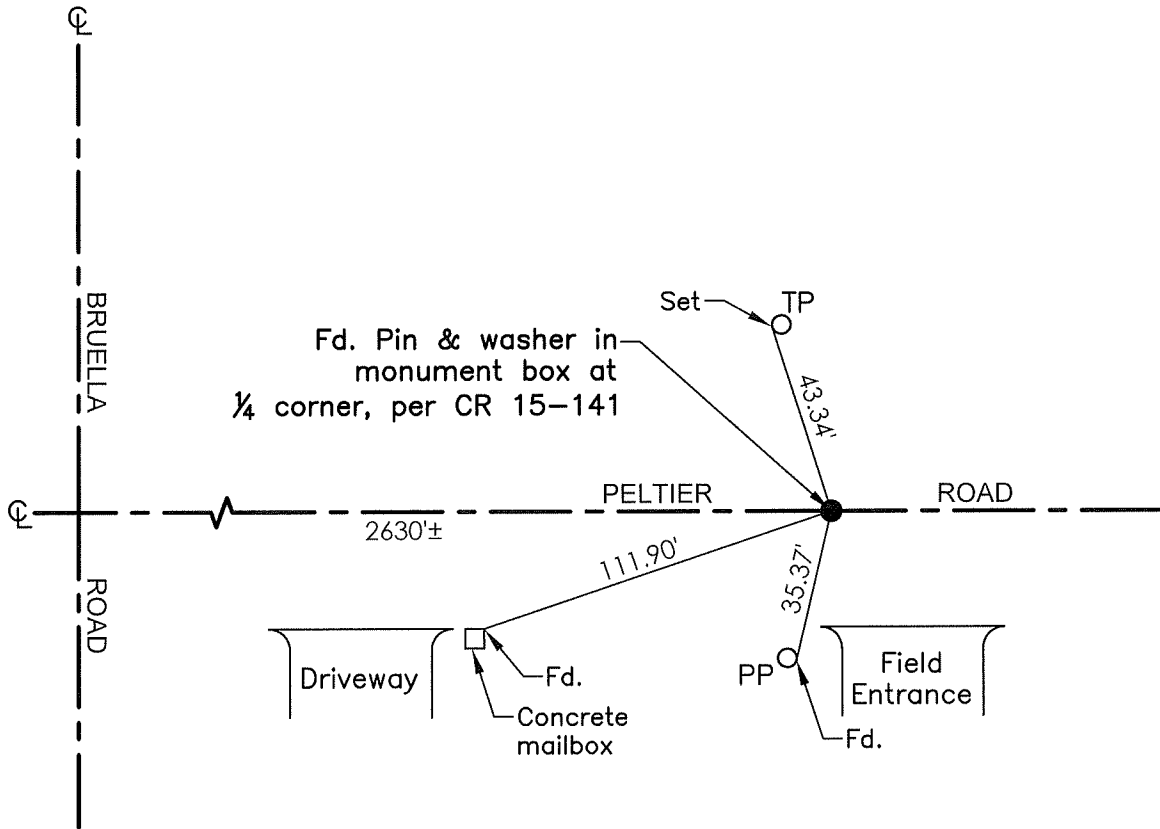
and examined and filed September 29, 2021

Signed James E. Hart P.L.S. or R.C.E. No. 8657

Title \_\_\_\_\_ County Surveyor



County Surveyor's Comment



- TR=Tree
- MB=Mailbox
- BM=Bench Mark
- EP=Edge of Pavement
- YL=Yellow Line
- FH=Fire Hydrant
- CR=Corner Record
- FP=Fence Post
- JP=Joint Pole
- LP=Light Pole
- PP=Power Pole
- GP=Guy Pole
- SP=Service Pole
- TP=Telephone Pole
- S.F.N.=Searched Found Nothing
- N.T.S.=Not To Scale
- M&P=Maps & Plats
- PM=Parcel Map
- RS=Record of Survey
- FB=Field Book
- N=North
- SDI=Storm Drain Inlet
- TOC=Top of Curb
- PCC=Portland Cement Concrete

Set=Conc. Nail with Brass Washer stamped  
 "S.J. Co.", unless otherwise noted  
 Fd.=Found Conc. Nail with Brass Washer stamped  
 "S.J. Co.", unless otherwise noted  
 Note: Found Monuments are not tagged unless  
 otherwise noted.

"No attempt was made to verify the Monument(s)"