

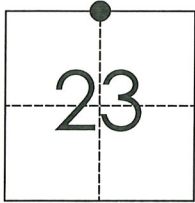
CORNER RECORD

Agency Index CR-21-151
 Document Number _____

City of _____ County of San Joaquin, California
 Brief Legal Description Peltier Road @ Tretheway Road

CORNER TYPE

COORDINATES (Optional)



T4N R7E
 MDB&M

Government Corner Control
 Meander Property
 Rancho Other

Date of Survey February 8, 2021

N. _____ E. _____

Elevation. _____

Units Metric U.S. Survey Foot

Horizontal Datum _____

Zone _____ Epoch Date _____

Vertical Datum _____

Complies with Public Resources Code §§8801-8819

Complies with Public Resources Code §§8890-8902

PLS Act Ref.: 8765(d) 8771 8773 Other:
 Corner/Monument: Left as found Established Rebuilt Pre-Construction
 Found and tagged Reestablished Referenced Post-Construction

Narrative of corner identified and monument as found, set, reset, replaced, or removed:
 See sheet #2 for description(s):

SURVEYOR'S STATEMENT

This Corner Record was prepared by me or under my direction in conformance with
 the Professional Land Surveyor's Act on June 4, 2021
 Signed James E. Hart P.L.S. or R.C.E. No. 8657

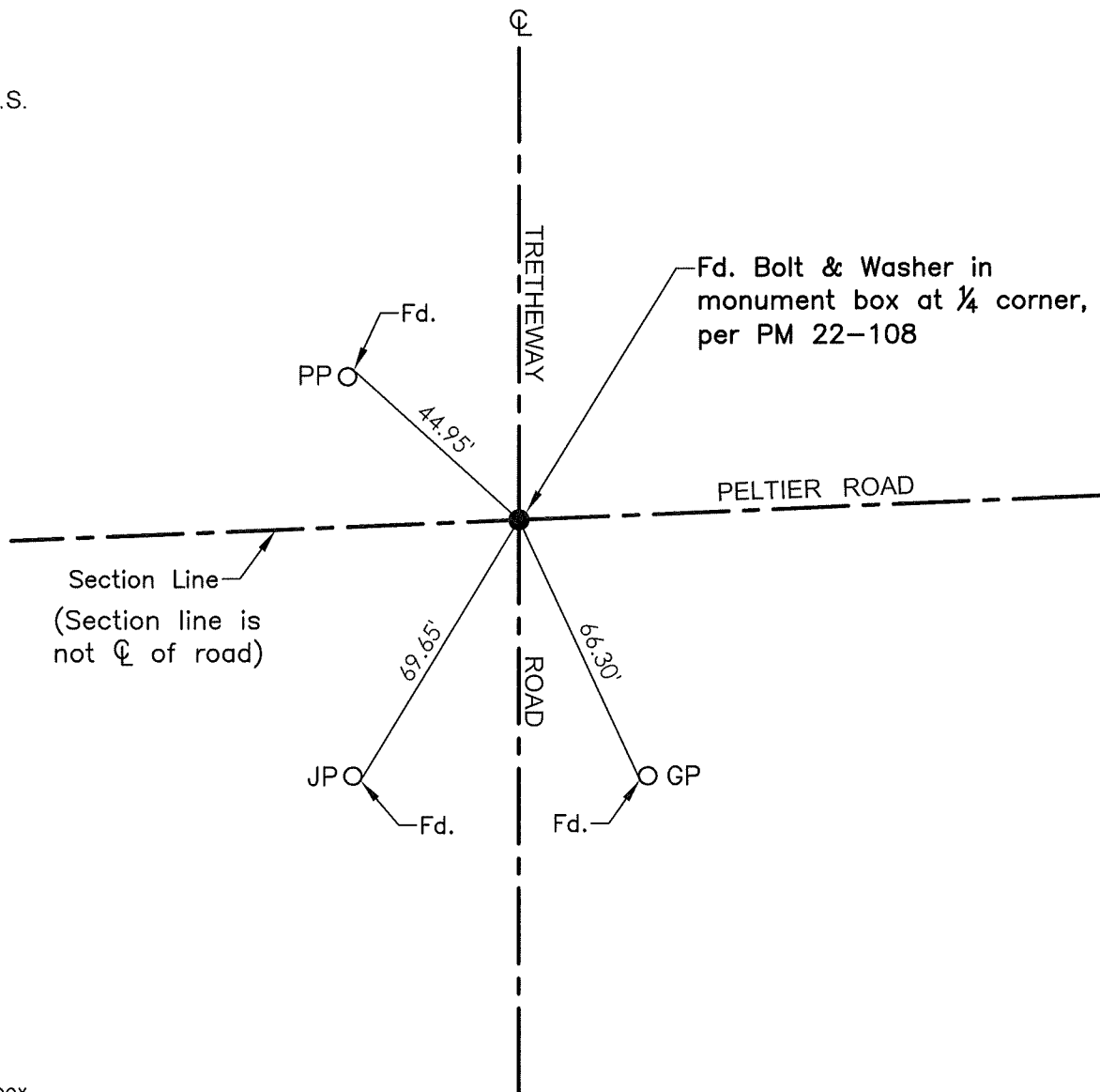
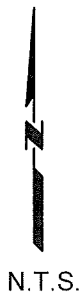


COUNTY SURVEYOR'S STATEMENT

This Corner Record was received September 13, 2021
 and examined and filed September 29, 2021
 Signed James E. Hart P.L.S. or R.C.E. No. 8657
 Title _____ County Surveyor



County Surveyor's Comment



Section Line
(Section line is not C of road)

- TR=Tree
- MB=Mailbox
- BM=Bench Mark
- EP=Edge of Pavement
- YL=Yellow Line
- FH=Fire Hydrant
- CR=Corner Record
- FP=Fence Post
- JP=Joint Pole
- LP=Light Pole
- PP=Power Pole
- GP=Guy Pole
- SP=Service Pole
- TP=Telephone Pole
- S.F.N.=Searched Found Nothing
- N.T.S.=Not To Scale
- M&P=Maps & Plats
- PM=Parcel Map
- RS=Record of Survey
- FB=Field Book
- N=North
- SDI=Storm Drain Inlet
- TOC=Top of Curb
- PCC=Portland Cement Concrete

Set=Conc. Nail with Brass Washer stamped
"S.J. Co.", unless otherwise noted
Fd.=Found Conc. Nail with Brass Washer stamped
"S.J. Co.", unless otherwise noted
Note: Found Monuments are not tagged unless
otherwise noted.

"No attempt was made to verify the Monument(s)"