

# CORNER RECORD

Agency Index CR-21-146  
 Document Number \_\_\_\_\_

City of \_\_\_\_\_ County of San Joaquin, California  
 Brief Legal Description Durham Ferry Road 2633'± east of Koster Road

### CORNER TYPE

### COORDINATES (Optional)



T3S R6E  
 MDB&M

Government Corner  Control   
 Meander  Property   
 Rancho  Other

N. \_\_\_\_\_ E. \_\_\_\_\_  
 Elevation. \_\_\_\_\_  
 Units Metric  U.S. Survey Foot   
 Horizontal Datum \_\_\_\_\_  
 Zone \_\_\_\_\_ Epoch Date \_\_\_\_\_  
 Vertical Datum \_\_\_\_\_

Date of Survey November 13, 2020

Complies with Public Resources Code §§8801-8819  
 Complies with Public Resources Code §§8890-8902

PLS Act Ref.:  8765(d)  8771  8773  Other:  
 Corner/Monument:  Left as found  Established  Rebuilt  Pre-Construction  
 Found and tagged  Reestablished  Referenced  Post-Construction

### Narrative of corner identified and monument as found, set, reset, replaced, or removed:

See sheet #2 for description(s):

### SURVEYOR'S STATEMENT

This Corner Record was prepared by me or under my direction in conformance with  
 the Professional Land Surveyor's Act on August 2, 2021  
 Signed James E Hart P.L.S. or R.C.E. No. 8657



### COUNTY SURVEYOR'S STATEMENT

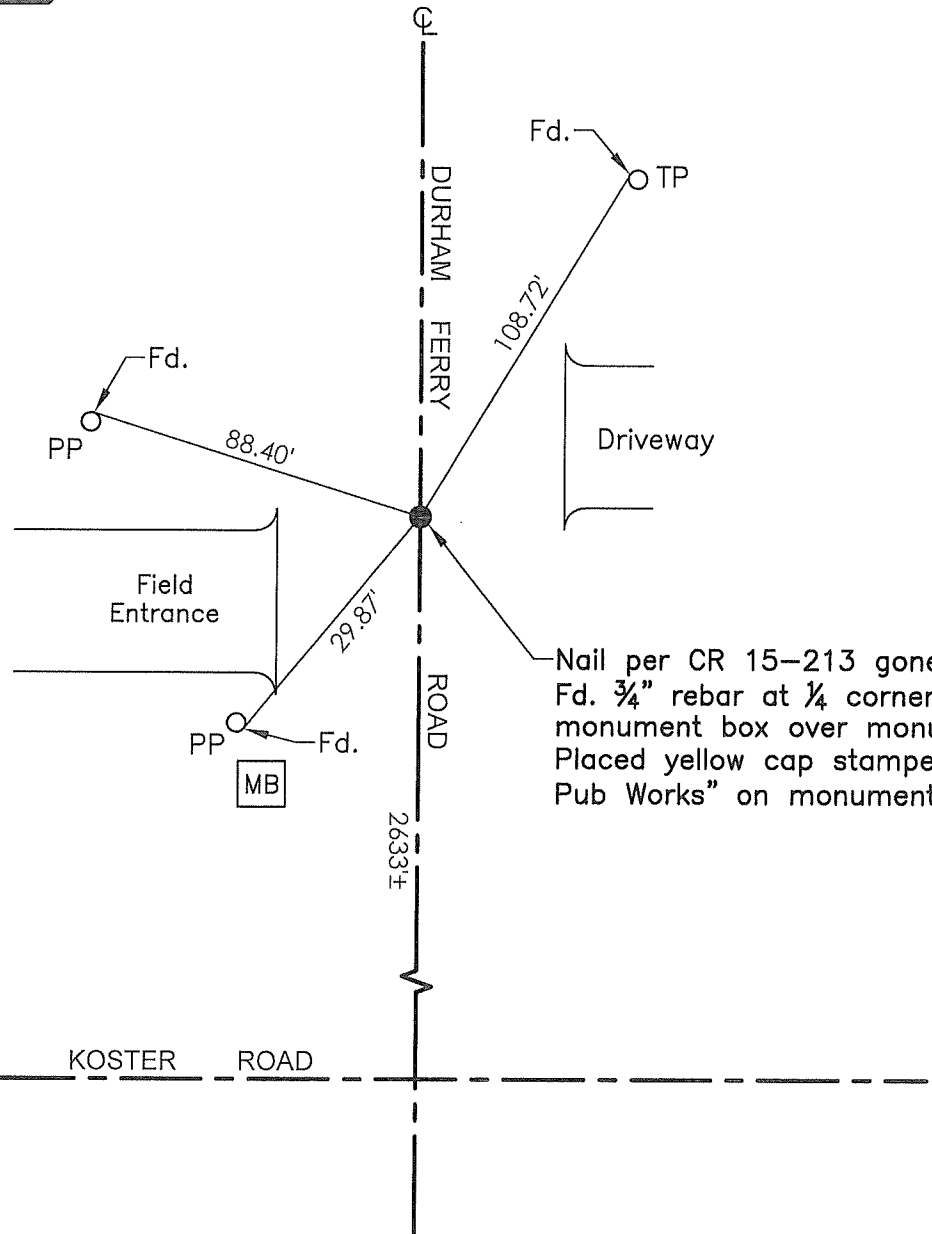
This Corner Record was received September 13, 2021  
 and examined and filed September 29, 2021  
 Signed James E. Hart P.L.S. or R.C.E. No. 8657  
 Title County Surveyor



### County Surveyor's Comment



N.T.S.



Nail per CR 15-213 gone.  
 Fd. 3/4" rebar at 1/4 corner. Placed  
 monument box over monument.  
 Placed yellow cap stamped "SJCO  
 Pub Works" on monument.

- TR=Tree
- MB=Mailbox
- BM=Bench Mark
- EP=Edge of Pavement
- YL=Yellow Line
- FH=Fire Hydrant
- CR=Corner Record
- FP=Fence Post
- JP=Joint Pole
- LP=Light Pole
- PP=Power Pole
- GP=Guy Pole
- SP=Service Pole
- TP=Telephone Pole
- S.F.N.=Searched Found Nothing
- N.T.S.=Not To Scale
- M&P=Maps & Plats
- PM=Parcel Map
- RS=Record of Survey
- FB=Field Book
- N=North
- SDI=Storm Drain Inlet
- TOC=Top of Curb
- PCC=Portland Cement Concrete

Set=Conc. Nail with Brass Washer stamped  
 "S.J. Co.", unless otherwise noted  
 Fd.=Found Conc. Nail with Brass Washer stamped  
 "S.J. Co.", unless otherwise noted  
 Note: Found Monuments are not tagged unless  
 otherwise noted.

"No attempt was made to verify the Monument(s)"