

CORNER RECORD

Agency Index CR-21-138

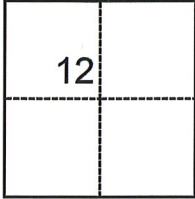
Document Number _____

City of LODI County of SAN JOAQUIN, California

Brief Legal Description LOT 37, M.&P. 11-32

CORNER TYPE

COORDINATES (Optional)



- Government Corner
- Meander
- Rancho
- Control
- Property
- Other

Date of Survey August 13, 2021

N. _____ E. _____

Elevation _____

Units Metric U.S. Survey Foot

Horizontal Datum _____

Zone _____ Epoch Date _____

Vertical Datum _____

Complies with Public Resources Code §§8801-8819

Complies with Public Resources Code §§8890-8902

T.3N., R.6E., M.D.B.&M.

PLS Act Ref.: 8765(d) 8771 8773 Other:

Corner/Monument: Left as found Established Rebuilt Pre-Construction

Found and tagged Reestablished Referenced Post-Construction

Narrative of corner identified and monument as found, set, reset, replaced, or removed:

See sheet #2 for description(s):

SURVEYOR'S STATEMENT

This Corner Record was prepared by me or under my direction in conformance with

the Professional Land Surveyors' Act on September 9, 2021

Signed Joe Murphy P.L.S. or R.C.E. No. 7269



COUNTY SURVEYOR'S STATEMENT

This Corner Record was received September 13, 2021

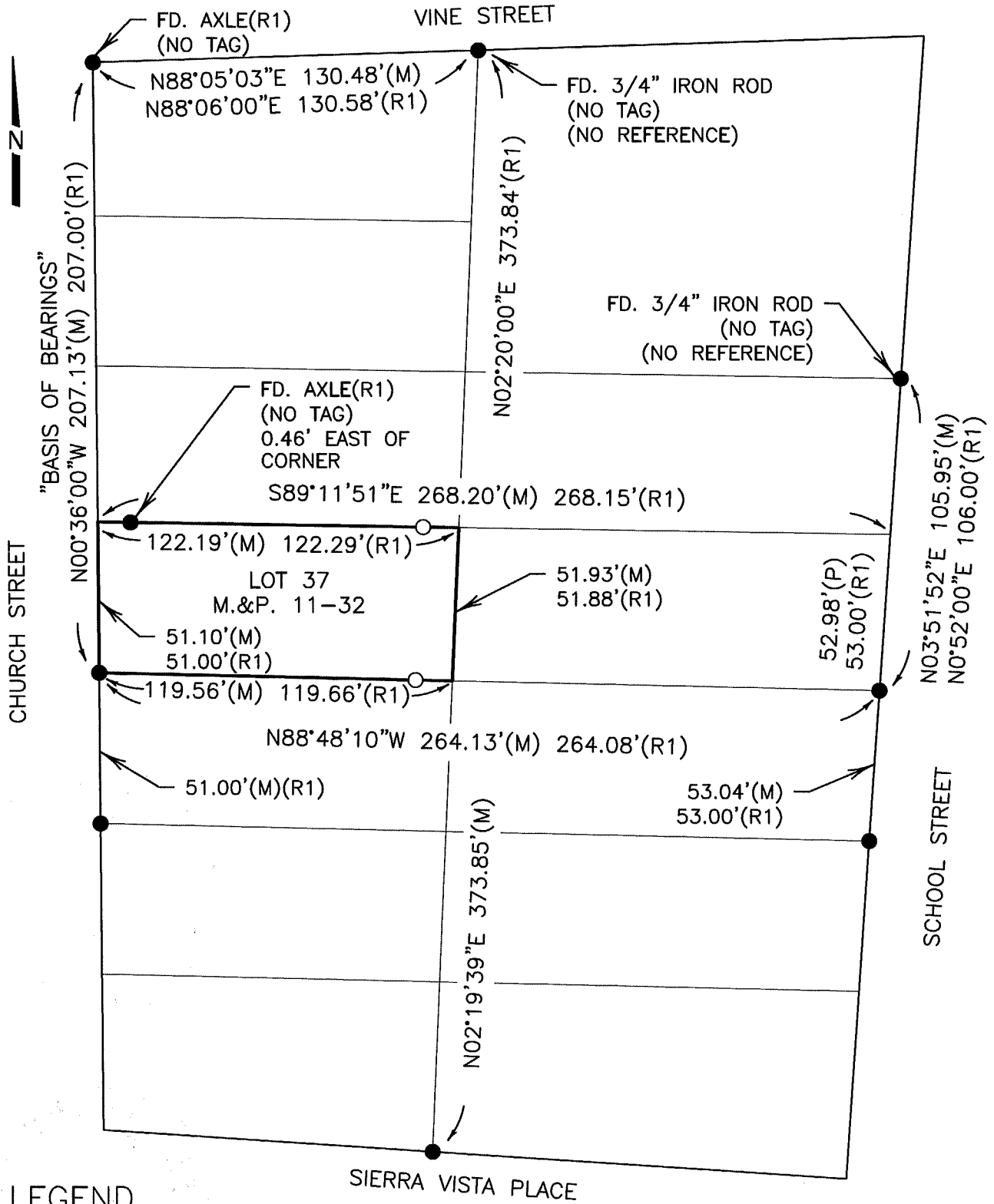
and examined and filed September 27, 2021

Signed James E. Hart P.L.S. or R.C.E. No. 8657

Title County Surveyor

County Surveyor's Comment





LEGEND

- S.J.C.R. SAN JOAQUIN COUNTY RECORDS
- FOUND 1-1/2" IRON PIPE,
NO TAG, NO REFERENCE,
UNLESS OTHERWISE NOTED.
- SET 3/4" X 30" IRON ROD,
CAPPED L.S. 7269 AS 1.00'
WITNESS CORNER
- FD. FOUND
- M.&P. MAPS AND PLATS

REFERENCE

(R1) M.&P. 11-32, S.J.C.R.