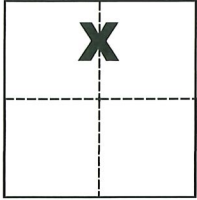


CORNER RECORD

Agency Index CR-21-121
Document Number _____

City of Stockton County of San Joaquin, California
Brief Legal Description NE corner of Lot 1350 and NW corner of Lot 1351 per M. & P. 20-43, S.J.C.R.



CORNER TYPE

Government Corner Control
 Meander Property
 Rancho Other

Date of Survey June 28, 2021

COORDINATES (Optional)

N. _____ E. _____
 Elevation _____
 Units Metric U.S. Survey Foot
 Horizontal Datum _____
 Zone _____ Epoch Date _____
 Vertical Datum _____
 Complies with Public Resources Code §§8801-8819
 Complies with Public Resources Code §§8890-8902

Sec. 19, T.2N., R.6E.,
M.D.B. & M.

PLS Act Ref.: 8765(d) 8771 8773 Other:

Corner/Monument: Left as found Established Rebuilt Pre-Construction
 Found and tagged Reestablished Referenced Post-Construction

Narrative of corner identified and monument as found, set, reset, replaced, or removed:
 See sheet #2 for description(s):

SURVEYOR'S STATEMENT

This Corner Record was prepared by me or under my direction in conformance with
the Professional Land Surveyors' Act on Aug. 3, 2021
Signed Michael L. Quarantoli P.L.S. or R.C.E. No. L.S. 4450

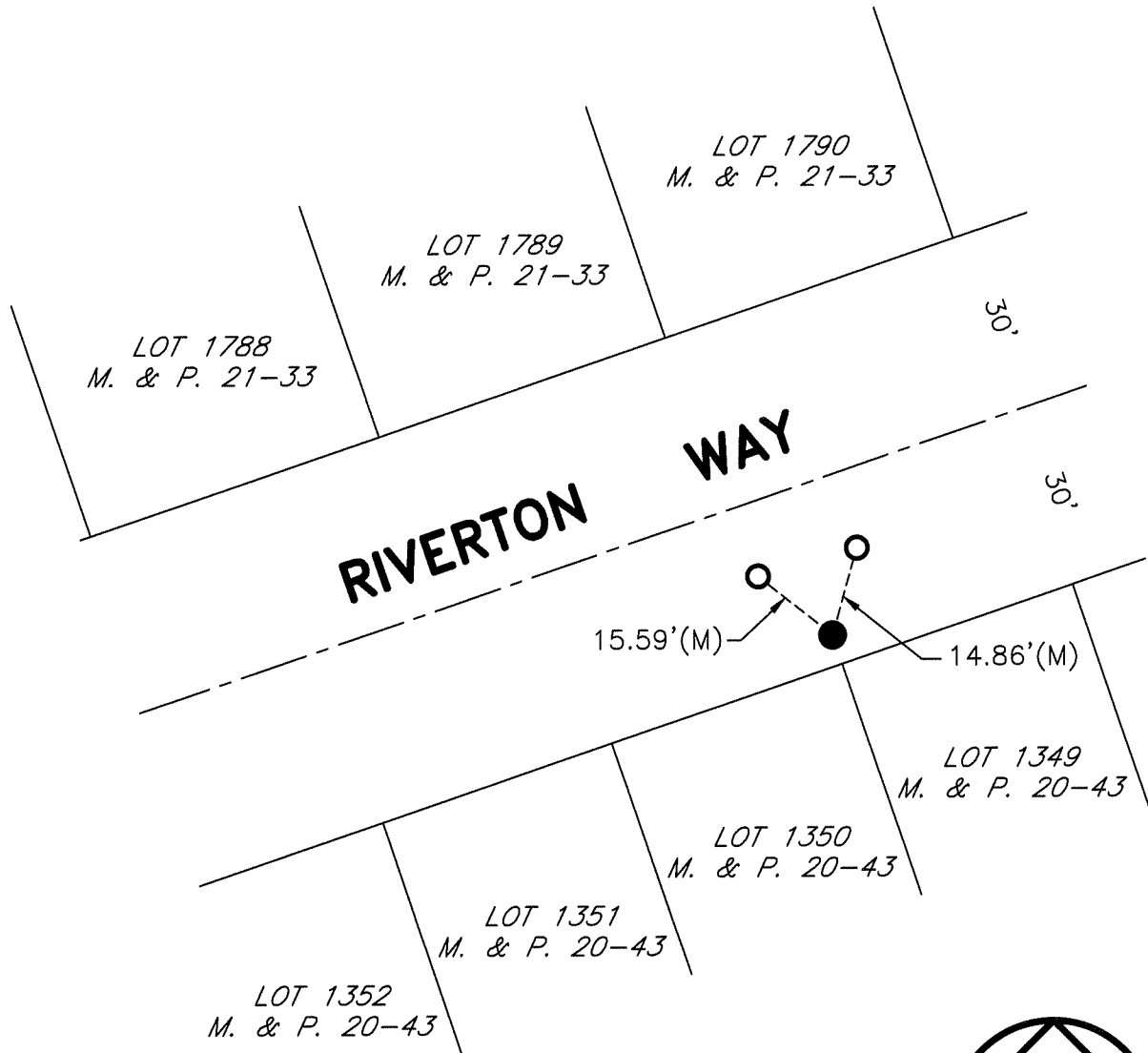


COUNTY SURVEYOR'S STATEMENT

This Corner Record was received August 26, 2021
and examined and filed September 13, 2021
Signed James E. Hart P.L.S. or R.C.E. No. 8657
Title County Surveyor

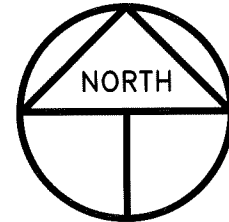


County Surveyor's Comment _____



REFERENCE

(A) CR-16-240, S.J.C.S.R.



SCALE: 1" = 30'
2021-107

LEGEND

- INDICATES FOUND SCRIBED CROSS W/TAG STAMPED LS 7051 PER (A)
- INDICATES SET CONCRETE NAIL AND TAG STAMPED LS 4450
- M. & P. INDICATES MAPS AND PLATS, VOLUME AND PAGE, S.J.C.R.
- C.R. INDICATES CORNER RECORD, S.J.C.S.R.
- S.J.C.R. INDICATES SAN JOAQUIN COUNTY RECORDS
- S.J.C.S.R. INDICATES SAN JOAQUIN COUNTY SURVEYOR'S RECORDS
- (M) INDICATES MEASURED ON THIS SURVEY