

# CORNER RECORD

Agency Index CR-21-118

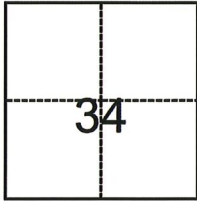
Document Number \_\_\_\_\_

City of MANTECA County of San Joaquin, California

Brief Legal Description \_\_\_\_\_ Lot 1, M&P 16-93

### CORNER TYPE

### COORDINATES (Optional)



- Government Corner
- Meander
- Rancho
- Control
- Property
- Other

Date of Survey May 3, 2021

N. \_\_\_\_\_ E. \_\_\_\_\_

Elevation \_\_\_\_\_

Units  Metric  U.S. Survey Foot

Horizontal Datum \_\_\_\_\_

Zone \_\_\_\_\_ Epoch Date \_\_\_\_\_

Vertical Datum \_\_\_\_\_

Complies with Public Resources Code §§8801-8819

Complies with Public Resources Code §§8890-8902

T.1S., R.7E., M.D.B.&M.

PLS Act Ref.:  8765(d)  8771  8773  Other:

Corner/Monument:  Left as found  Established  Rebuilt  Pre-Construction

Found and tagged  Reestablished  Referenced  Post-Construction

Narrative of corner identified and monument as found, set, reset, replaced, or removed:

See sheet #2 for description(s):

### SURVEYOR'S STATEMENT

This Corner Record was prepared by me or under my direction in conformance with

the Professional Land Surveyors' Act on August 19, 2021

Signed Joe Murphy P.L.S. or R.C.E. No. L.S. 7269



### COUNTY SURVEYOR'S STATEMENT

This Corner Record was received August 20, 2021

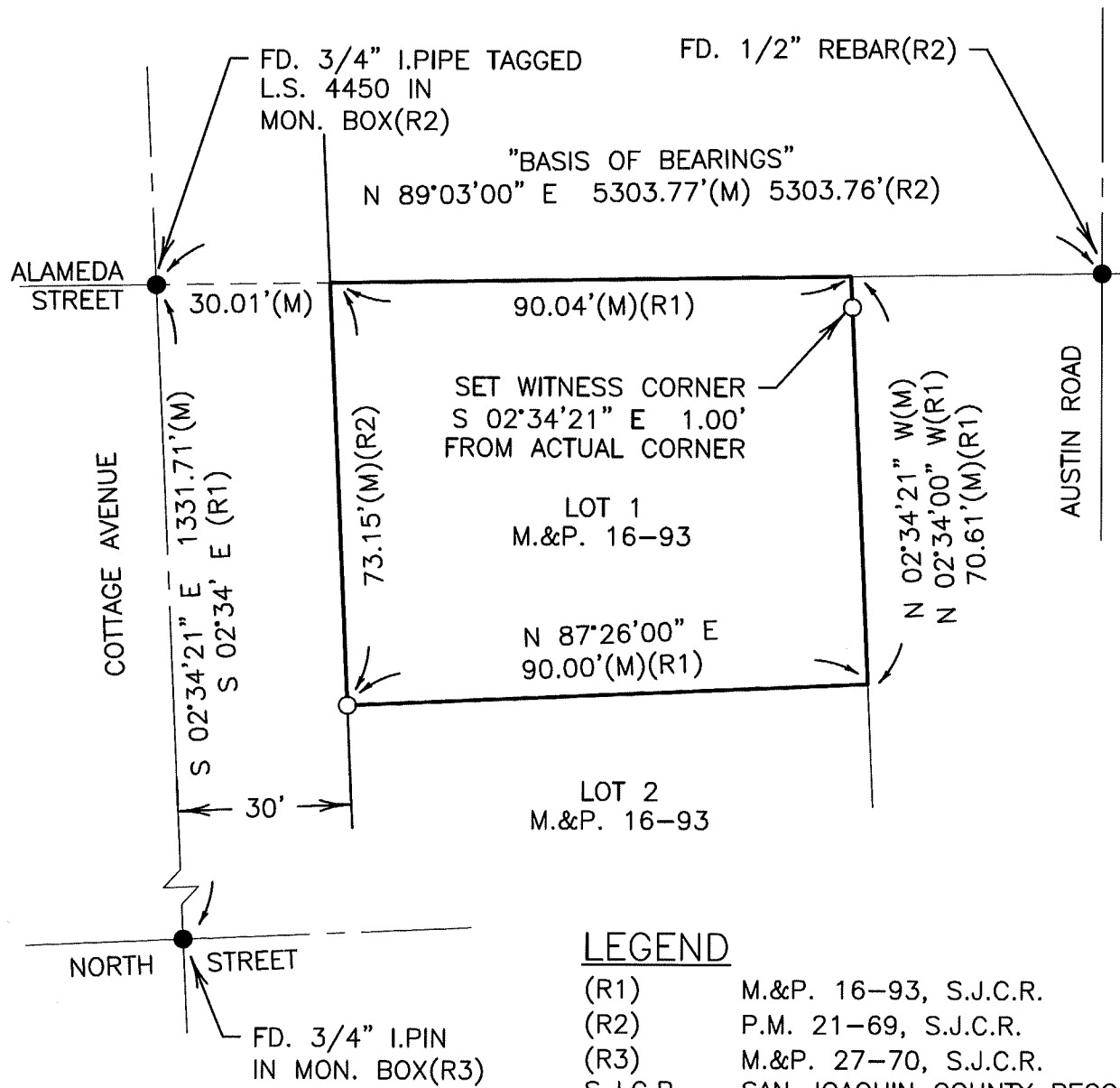
and examined and filed August 26, 2021

Signed James E. Hart P.L.S. or R.C.E. No. 8657

Title County Surveyor

County Surveyor's Comment \_\_\_\_\_





LEGEND

- (R1) M.&P. 16-93, S.J.C.R.
- (R2) P.M. 21-69, S.J.C.R.
- (R3) M.&P. 27-70, S.J.C.R.
- S.J.C.R. SAN JOAQUIN COUNTY RECORDS
- FOUND MONUMENT AS NOTED
- SET 3/4" X 30" IRON ROD,  
CAPPED L.S. 7269
- M.&P. MAPS AND PLATS
- P.M. PARCEL MAP
- FD. FOUND
- I.P.I.PE IRON PIPE
- I.P.IN IRON PIN