

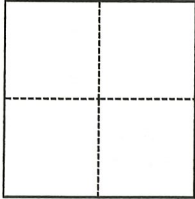
CORNER RECORD

Agency Index CR-21-116
Document Number _____

City of STOCKTON County of SAN JOAQUIN, California
Brief Legal Description LOT 7 PER MAPS & PLATS 39-67, PORTION OF SEC. 28, T. 1 N., R. 7 E., M.D.B. & M.

CORNER TYPE

COORDINATES (Optional)



- Government Corner
- Meander
- Rancho
- Control
- Property
- Other

Date of Survey March 3, 2020

N. _____ E. _____
 Elevation _____
 Units Metric U.S. Survey Foot
 Horizontal Datum _____
 Zone _____ Epoch Date _____
 Vertical Datum _____
 Complies with Public Resources Code §§8801-8819
 Complies with Public Resources Code §§8890-8902

- PLS Act Ref.: 8765(d) 8771 8773 Other: _____
- Corner/Monument: Left as found Established Rebuilt Pre-Construction
 Found and tagged Reestablished Referenced Post-Construction

Narrative of corner identified and monument as found, set, reset, replaced, or removed:

See sheet #2 for description(s):

PRE-CONSTRUCTION CORNER RECORD. THIS DOCUMENT IS FOR THE PURPOSE OF PRESERVING AND ESTABLISHING TIES TO EXISTING MONUMENTS IN THE AREA OF NEW CONSTRUCTION OF IMPROVEMENTS, AS SHOWN ON BOOK 39 OF MAPS AND PLATS, PAGE 67, SAN JOAQUIN COUNTY RECORDS.

SURVEYOR'S STATEMENT

This Corner Record was prepared by me or under my direction in conformance with the Professional Land Surveyors' Act on August 9, 2021

Signed [Signature] P.L.S. or R.C.E. No. L.S. 7600



COUNTY SURVEYOR'S STATEMENT

This Corner Record was received August 10, 2021
and examined and filed August 17, 2021

Signed James E. Hart P.L.S. or R.C.E. No. 8657
Title County Surveyor



County Surveyor's Comment



WONG ENGINEERS, INC.

PLANNING ENGINEERING SURVEYING
 4578 FEATHER RIVER DRIVE, SUITE A
 STOCKTON, CALIFORNIA (209) 476-0011
 AUGUST 9, 2021 2 OF 2

REFERENCES:

(A) M&P 39-67, SJCR
 (B) RS 35-5, SJCR

DESCRIPTION:

THIS DOCUMENT IS FOR THE PURPOSE OF PRESERVING AND ESTABLISHING TIES TO EXISTING MONUMENTS. RETRACEMENT SURVEY WILL DETERMINE VALIDITY OF MONUMENT LOCATIONS. SET MONUMENT TIES TO EXISTING MONUMENTS.

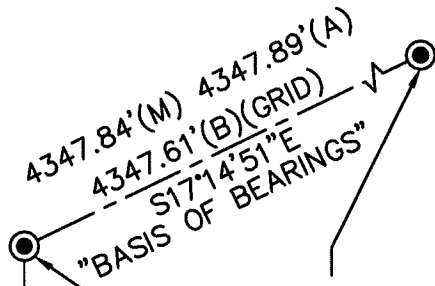
LEGEND:

C.O.S. CITY OF STOCKTON
 FD. FOUND
 I. IRON
 M&P MAPS & PLATS, BOOK-PAGE
 MON. MONUMENT
 RS RECORD OF SURVEY, BOOK-PAGE
 SFN SEARCHED, FOUND NOTHING
 SJCR SAN JOAQUIN COUNTY RECORDS
 ● 3/4" I.PIN (A)
 ⊙ FD. C.O.S. MONUMENT BOX (B)

CARPENTER ROAD

C.O.S. MON.
 5S-16(A)(B)
 N=2159968.65'
 E=6350752.32'
 (GRID)

C.O.S. MON.
 3S-9(A)(B)
 N=2155816.54'
 E=6352041.39'
 (GRID)

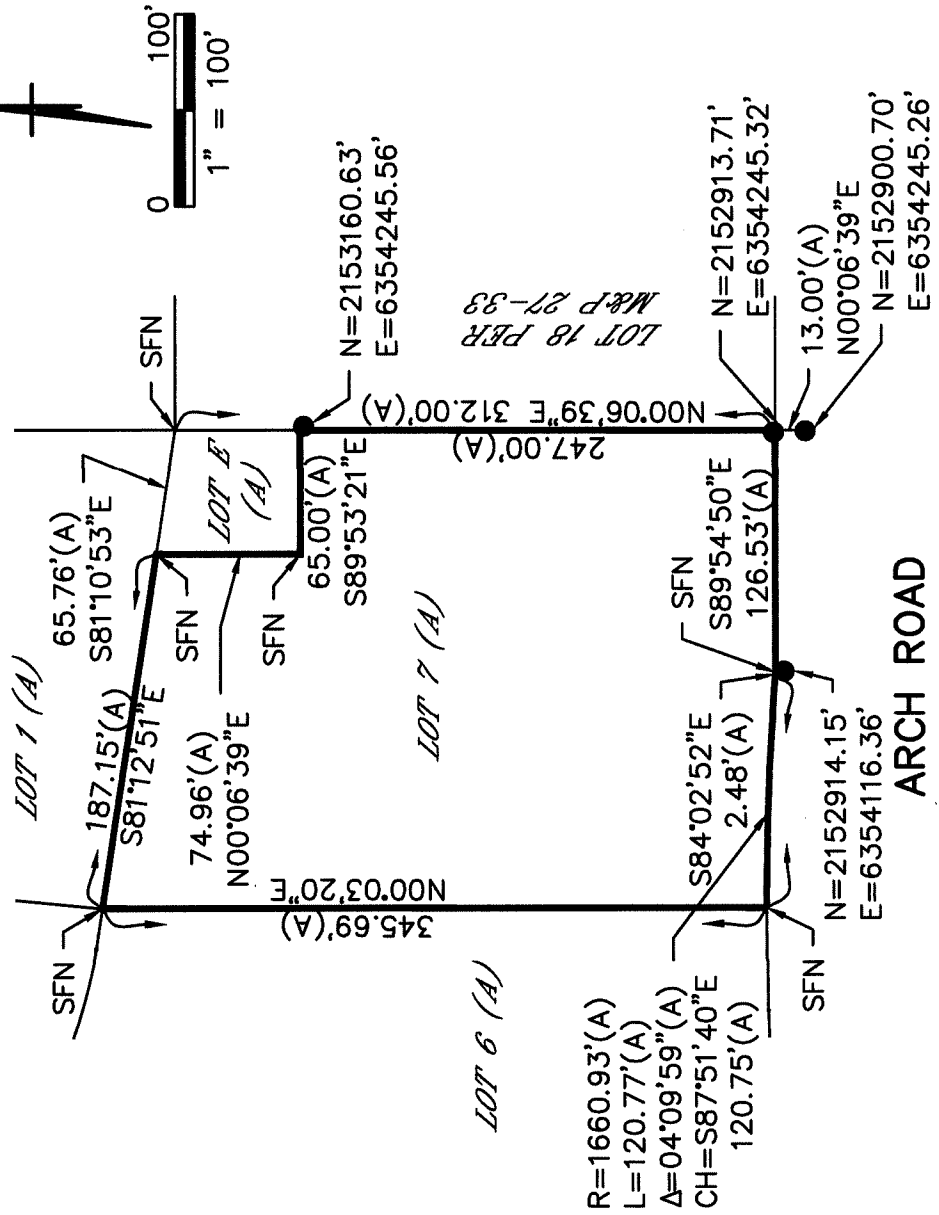


SOUTH 99 FRONTAGE ROAD

NOTES:

ALL BEARINGS AND DISTANCES SHOWN ARE FOR REFERENCE ONLY.

FOUND MONUMENTS HAVE GROUND COORDINATES. C.O.S. MONUMENTS HAVE GRID COORDINATES.



R=1660.93'(A)
 L=120.77'(A)
 Δ=04°09'59"(A)
 CH=S87°51'40"E
 120.75'(A)

LOT 18 PER
 M&P 27-33

N=2153160.63'
 E=6354245.56'

N=2152913.71'
 E=6354245.32'
 13.00'(A)
 N00°06'39"E
 N=2152900.70'
 E=6354245.26'

ARCH ROAD