

CORNER RECORD

Agency Index CR-21-115

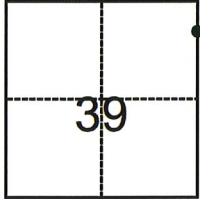
Document Number _____

City of Stockton County of San Joaquin, California

Brief Legal Description A.P.N. 177-100-03

CORNER TYPE

COORDINATES (Optional)



- Government Corner
- Meander
- Rancho
- Control
- Property
- Other

Date of Survey May 6, 2021

N. _____ E. _____

Elevation _____

Units Metric U.S. Survey Foot

Horizontal Datum _____

Zone _____ Epoch Date _____

Vertical Datum _____

Complies with Public Resources Code §§8801-8819

Complies with Public Resources Code §§8890-8902

C.M. WEBER GRANT

PLS Act Ref.: 8765(d) 8771 8773 Other:

Corner/Monument: Left as found Established Rebuilt Pre-Construction

Found and tagged Reestablished Referenced Post-Construction

Narrative of corner identified and monument as found, set, reset, replaced, or removed:

See sheet #2 for description(s):

SURVEYOR'S STATEMENT

This Corner Record was prepared by me or under my direction in conformance with

the Professional Land Surveyors' Act on August 2, 2021

Signed [Signature] P.L.S. or R.C.E. No. L.S. 7269



COUNTY SURVEYOR'S STATEMENT

This Corner Record was received August 4, 2021

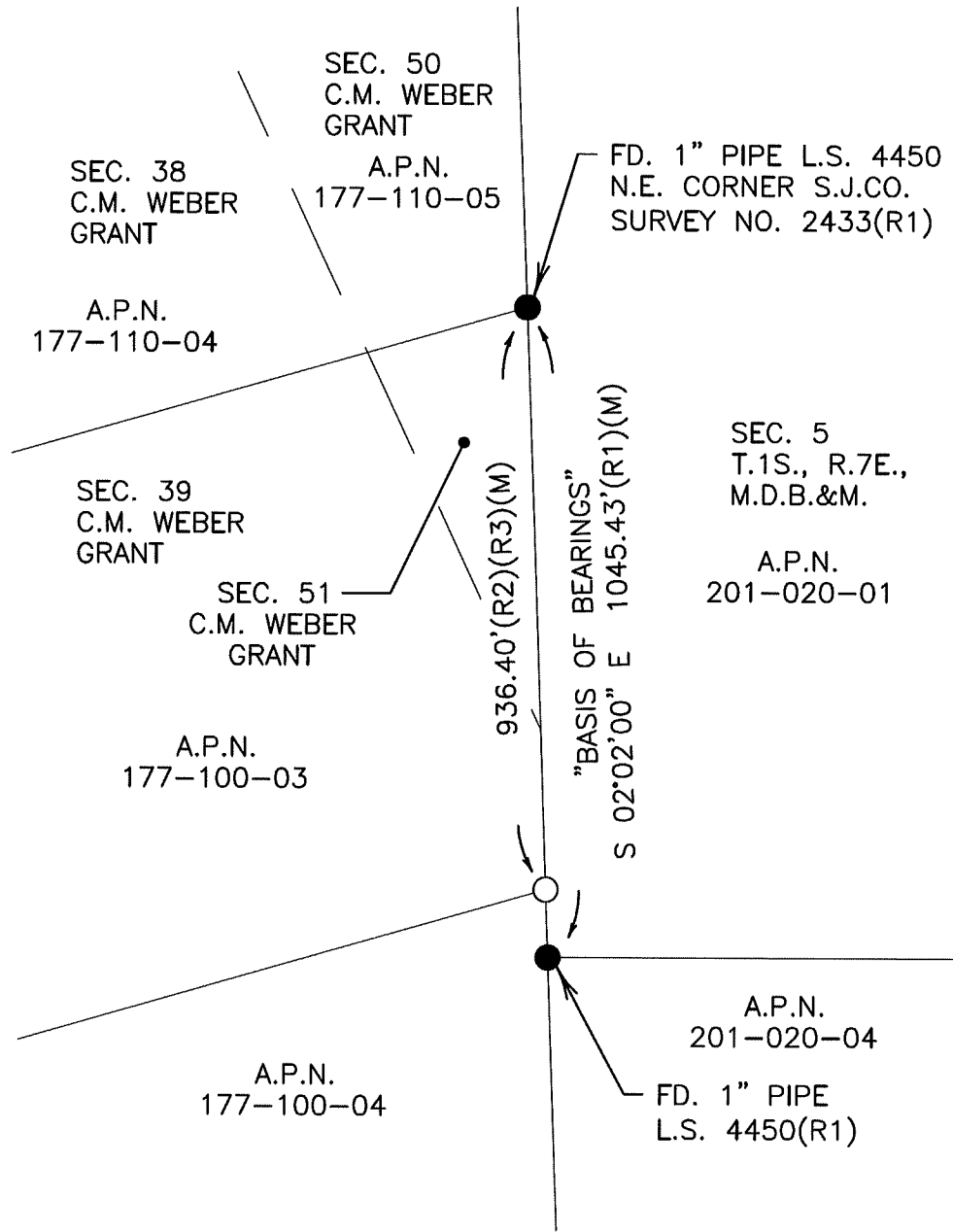
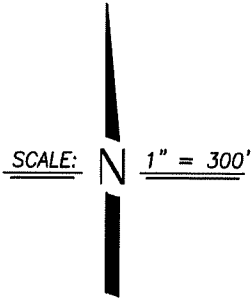
and examined and filed August 17, 2021

Signed James E Hart P.L.S. or R.C.E. No. 8657

Title County Surveyor

County Surveyor's Comment





LEGEND

- (R1) R.S. 39-139, S.J.C.R.
- (R2) UNRECORDED SURVEY BY H.B. BUDD
IN FEB. 1919, ON FILE WITH S.J.CO.
SURVEYOR'S OFFICE (85-FF)
- (R3) D.N. 2011-130482, S.J.C.R.
- S.J.C.R. SAN JOAQUIN COUNTY RECORDS
- FOUND MONUMENT AS NOTED
- SET 3/4" X 30" IRON ROD,
CAPPED L.S. 7269
- D.N. DOCUMENT NUMBER
- A.P.N. ASSESSOR'S PARCEL NUMBER
- SEC. SECTION