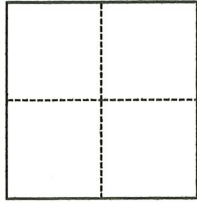


CORNER RECORD

Agency Index CR-21-113

Document Number _____

City of _____ County of San Joaquin, CaliforniaBrief Legal Description Common line between parcels "A" & "C" as shown on P.M. 10-193., S.J.C.R.**CORNER TYPE****COORDINATES (Optional)**

- Government Corner Control
 Meander Property
 Rancho Other

Date of Survey June 11, 2021

N. _____ E. _____

Elevation _____

Units Metric U.S. Survey Foot

Horizontal Datum _____

Zone _____ Epoch Date _____

Vertical Datum _____

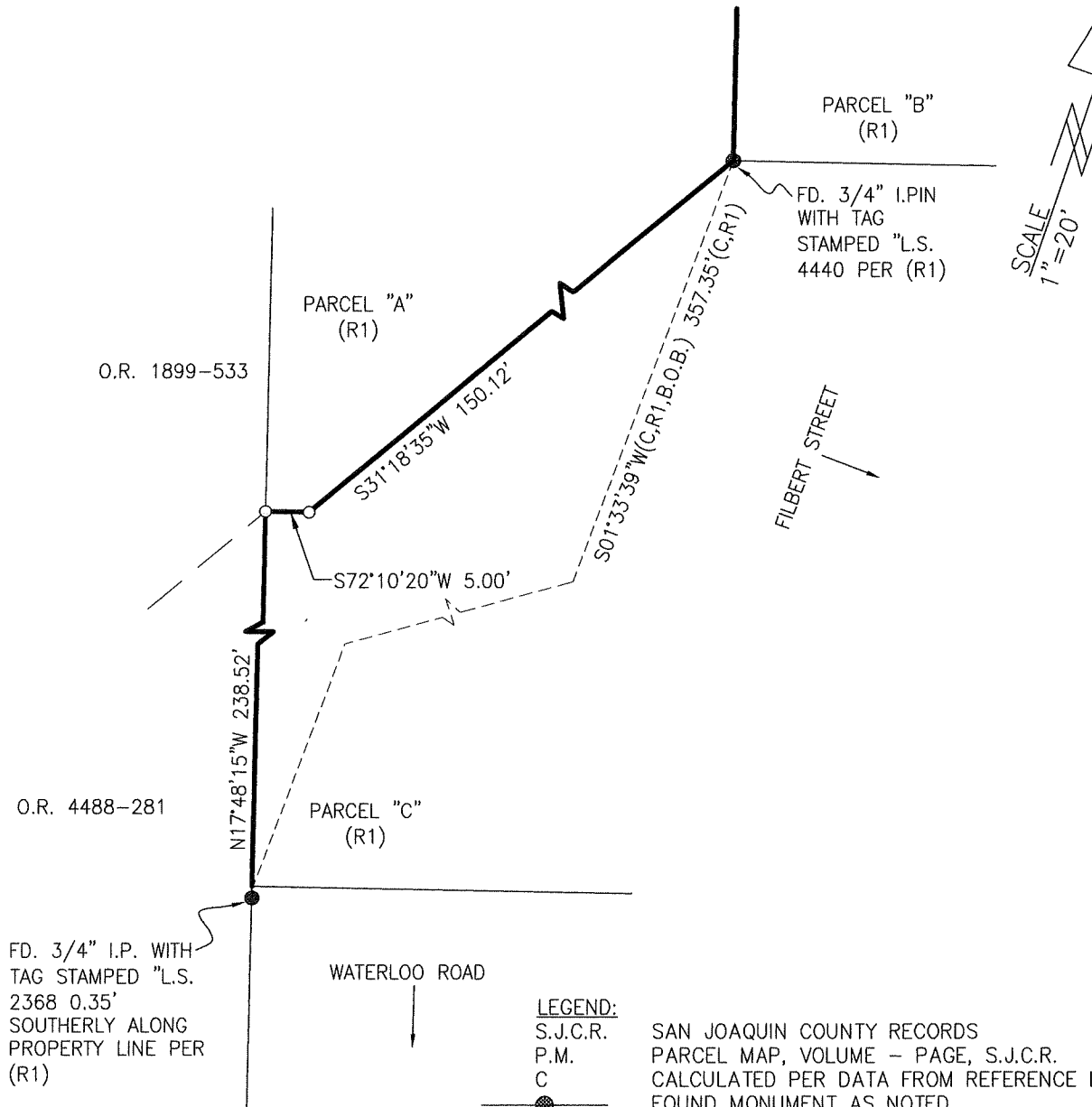
 Complies with Public Resources Code §§8801-8819 Complies with Public Resources Code §§8890-8902PLS Act Ref.: 8765(d) 8771 8773 Other:Corner/Monument: Left as found Established Rebuilt Pre-Construction Found and tagged Reestablished Referenced Post-Construction

Narrative of corner identified and monument as found, set, reset, replaced, or removed:

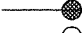
 See sheet #2 for description(s):**SURVEYOR'S STATEMENT**

This Corner Record was prepared by me or under my direction in conformance with

the Professional Land Surveyors' Act on July 26, 2021Signed [Signature] P.L.S. or R.C.E. No. 8080**COUNTY SURVEYOR'S STATEMENT**This Corner Record was received July 30, 2021and examined and filed August 3, 2021Signed James E. Hart P.L.S. or R.C.E. No. 8657Title County Surveyor**County Surveyor's Comment**



LEGEND:

S.J.C.R. SAN JOAQUIN COUNTY RECORDS
 P.M. PARCEL MAP, VOLUME - PAGE, S.J.C.R.
 C CALCULATED PER DATA FROM REFERENCE LISTED
 FOUND MONUMENT AS NOTED
 SET 3/4" BY 30" LONG REBAR WITH PLASTIC CAP STAMPED PLS8080.
 B.O.B. BASIS OF BEARINGS
 I.P. IRON PIPE
 FD. FOUND
 O.R. OFFICIAL RECORDS, S.J.C.R.

BASIS OF BEARINGS:

THE BEARING BETWEEN A CALCULATED LINE BETWEEN THE TWO FOUND MONUMENTS AS SHOWN ON P.M. 10-193 S.J.C.R. (R1). SAID BEARING BEING S01°33'39"W.

REFERENCE:
(R1) P.M. 10-193, S.J.C.R.