

CORNER RECORD

Agency Index

CR-21-111

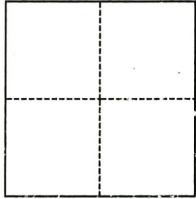
Document Number

City of RIPON County of SAN JOAQUIN, California

Brief Legal Description LOT 4 OF TRACT NO. 3710, BOOK 41, MAPS AND PLATS, PAGE 61

CORNER TYPE

COORDINATES (Optional)



- Government Corner
- Meander
- Rancho
- Control
- Property
- Other

Date of Survey June 10, 2021

N. _____ E. _____

Elevation _____

Units Metric U.S. Survey Foot

Horizontal Datum _____

Zone _____ Epoch Date _____

Vertical Datum _____

Complies with Public Resources Code §§8801-8819

Complies with Public Resources Code §§8890-8902

T.2S., R.8E., SEC 19

PLS Act Ref.: 8765(d) 8771 8773 Other:

Corner/Monument: Left as found Established Rebuilt Pre-Construction

Found and tagged Reestablished Referenced Post-Construction

Narrative of corner identified and monument as found, set, reset, replaced, or removed:

See sheet #2 for description(s):

MONUMENTS TIED OUT PRIOR TO CONSTRUCTION.

SURVEYOR'S STATEMENT

This Corner Record was prepared by me or under my direction in conformance with

the Professional Land Surveyors' Act on July 9, 2021

Signed *Neil E. Thonesen* P.L.S. or R.C.E. No. 8656



COUNTY SURVEYOR'S STATEMENT

This Corner Record was received July 20, 2021

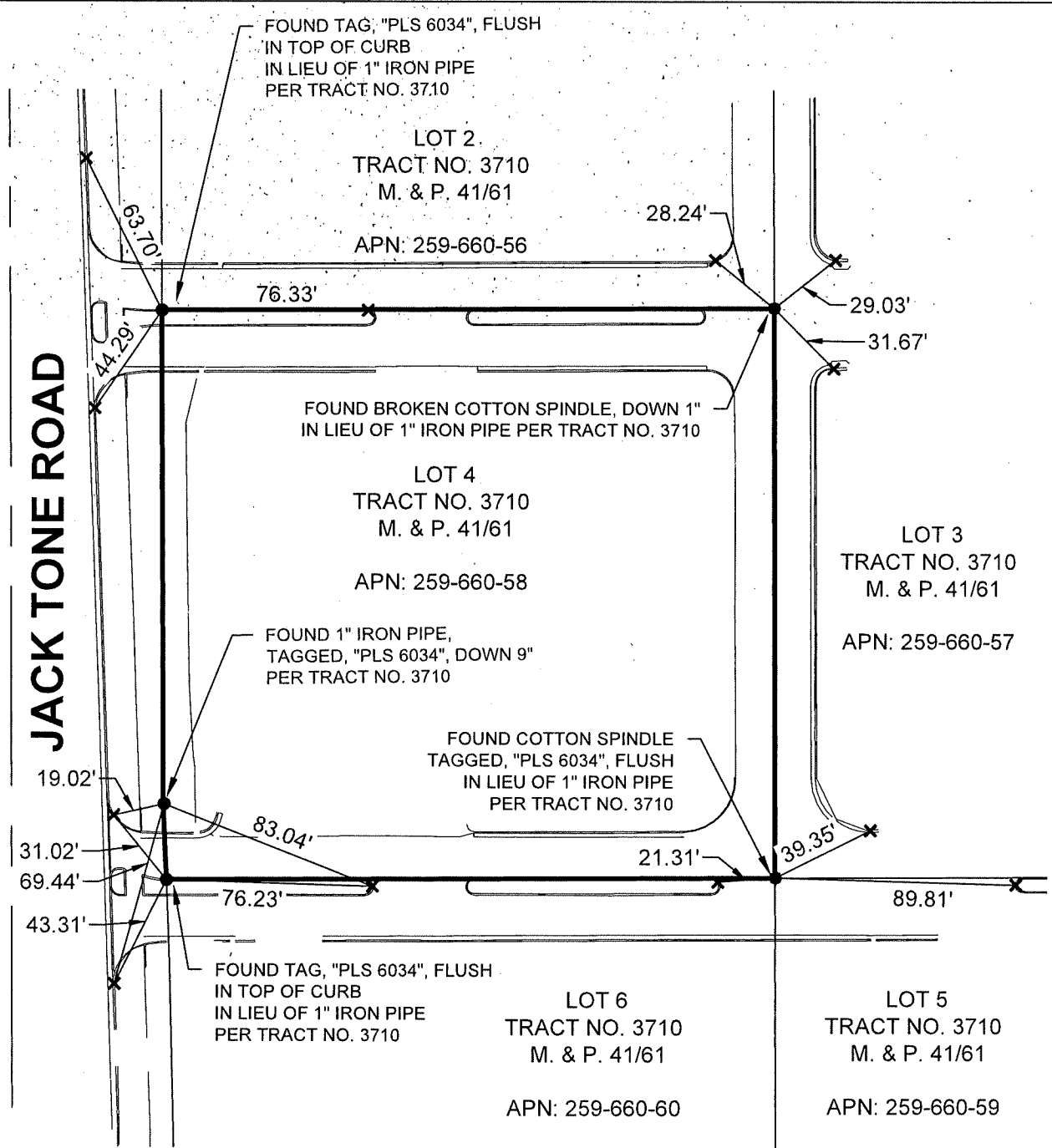
and examined and filed July 27, 2021

Signed *James E. Hart* P.L.S. or R.C.E. No. 8657

Title County Surveyor

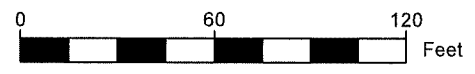
County Surveyor's Comment





LEGEND:

- FOUND AND ACCEPTED MONUMENT AS NOTED
- ✕ SET CUT CROSS IN TOP OF CURB AS REFERENCE TO MONUMENT



SCALE: 1" = 60'