

# CORNER RECORD

Agency Index CR-21-110

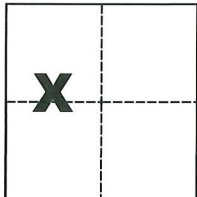
Document Number \_\_\_\_\_

City of Stockton County of San Joaquin, California

Brief Legal Description Southwesterly corner of Lot 231 per M. & P. 30-50, S.J.C.R.

### CORNER TYPE

### COORDINATES (Optional)



Government Corner  Control   
Meander  Property   
Rancho  Other

N. \_\_\_\_\_ E. \_\_\_\_\_

Elevation \_\_\_\_\_

Units Metric  U.S. Survey Foot

Horizontal Datum \_\_\_\_\_

Zone \_\_\_\_\_ Epoch Date \_\_\_\_\_

Date of Survey May 13, 2021

Vertical Datum \_\_\_\_\_

Complies with Public Resources Code §§8801-8819

Complies with Public Resources Code §§8890-8902

Sec. 7, T.2N., R.6E.,  
M.D.B. & M.

PLS Act Ref.:  8765(d)  8771  8773  Other:

Corner/Monument:  Left as found  Established  Rebuilt  Pre-Construction

Found and tagged  Reestablished  Referenced  Post-Construction

Narrative of corner identified and monument as found, set, reset, replaced, or removed:

See sheet #2 for description(s):

### SURVEYOR'S STATEMENT

This Corner Record was prepared by me or under my direction in conformance with

the Professional Land Surveyors' Act on

July 6, 2021

Signed

*Michael L. Quartaroli*

P.L.S. or R.C.E. No.

L.S. 4450



### COUNTY SURVEYOR'S STATEMENT

This Corner Record was received

July 13, 2021

and examined and filed

July 16, 2021

Signed

*James E. Hart*

P.L.S. or R.C.E. No.

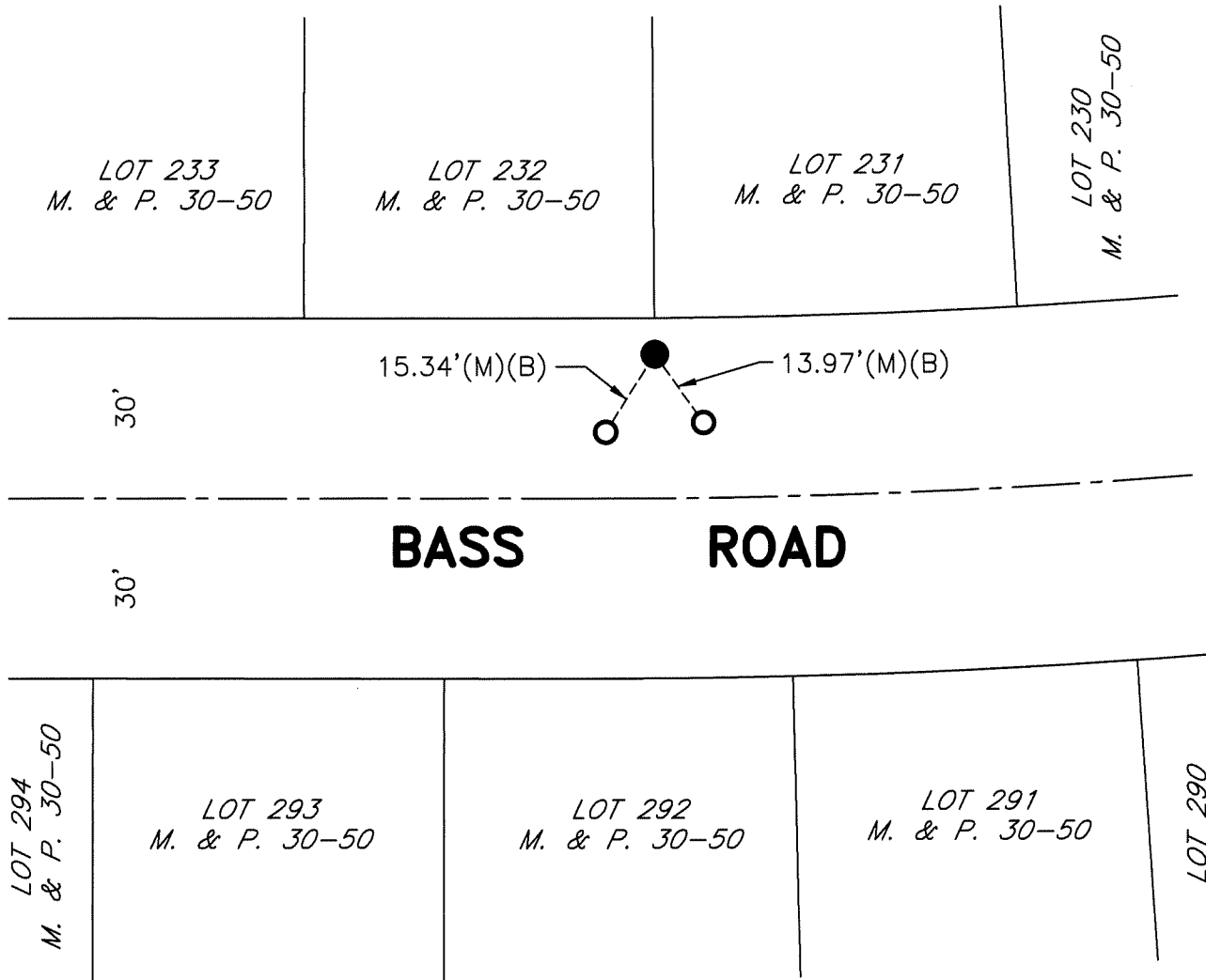
8657

Title

County Surveyor

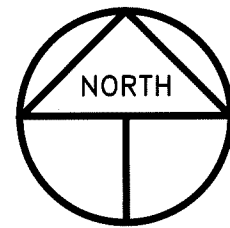
County Surveyor's Comment





**REFERENCES**

- (A) M. & P. 30-50, S.J.C.R.
- (B) CR-21-104, S.J.C.S.R.



SCALE: 1" = 30'  
2021-28 POST

**LEGEND**

- INDICATES S.F.N. SAW CUT CROSS PER (A)(B), SET NEW CHISELED CROSS
- INDICATES FOUND CONCRETE NAIL AND TAG STAMPED LS 4450 PER (B)
- M. & P. INDICATES MAPS AND PLATS, VOLUME AND PAGE, S.J.C.R.
- S.J.C.R. INDICATES SAN JOAQUIN COUNTY RECORDS
- (M) INDICATES MEASURED ON THIS SURVEY
- S.F.N. INDICATES SEARCHED FOUND NOTHING
- CR INDICATES CORNER RECORD, S.J.C.S.R.
- S.J.C.S.R. INDICATES SAN JOAQUIN COUNTY SURVEYOR'S RECORDS