

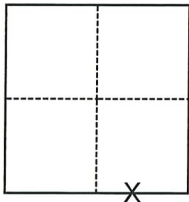
CORNER RECORD

Agency Index CR-21-103
Document Number _____

City of Lodi County of San Joaquin, California
Brief Legal Description Property monuments at Lodi Avenue (Orange Avenue - Fairmont Avenue)

CORNER TYPE

COORDINATES (Optional)



- Government Corner
- Meander
- Rancho
- Control
- Property
- Other

Date of Survey February 15, 2021

N. _____ E. _____
Elevation _____
Units Metric U.S. Survey Foot
Horizontal Datum _____
Zone _____ Epoch Date _____
Vertical Datum _____
 Complies with Public Resources Code §§8801-8819
 Complies with Public Resources Code §§8890-8902

Section 2, T.3N., R.6E.
M.D.B.&M.

- PLS Act Ref.: 8765(d) 8771 8773 Other:
- Corner/Monument: Left as found Established Rebuilt Pre-Construction
 Found and tagged Reestablished Referenced Post-Construction

Narrative of corner identified and monument as found, set, reset, replaced, or removed:

See sheet #2 for description(s):

FOUND REFERENCED MONUMENTS ON LOT LINE PROJECTIONS PER RS 27-82, PM 24-85 AND RS 33-59. NO BOUNDARY ANALYSIS WAS PERFORMED.

SURVEYOR'S STATEMENT

This Corner Record was prepared by me or under my direction in conformance with the Professional Land Surveyors' Act on June 14, 2021

Signed [Signature] P.L.S. or R.C.E. No. 9478



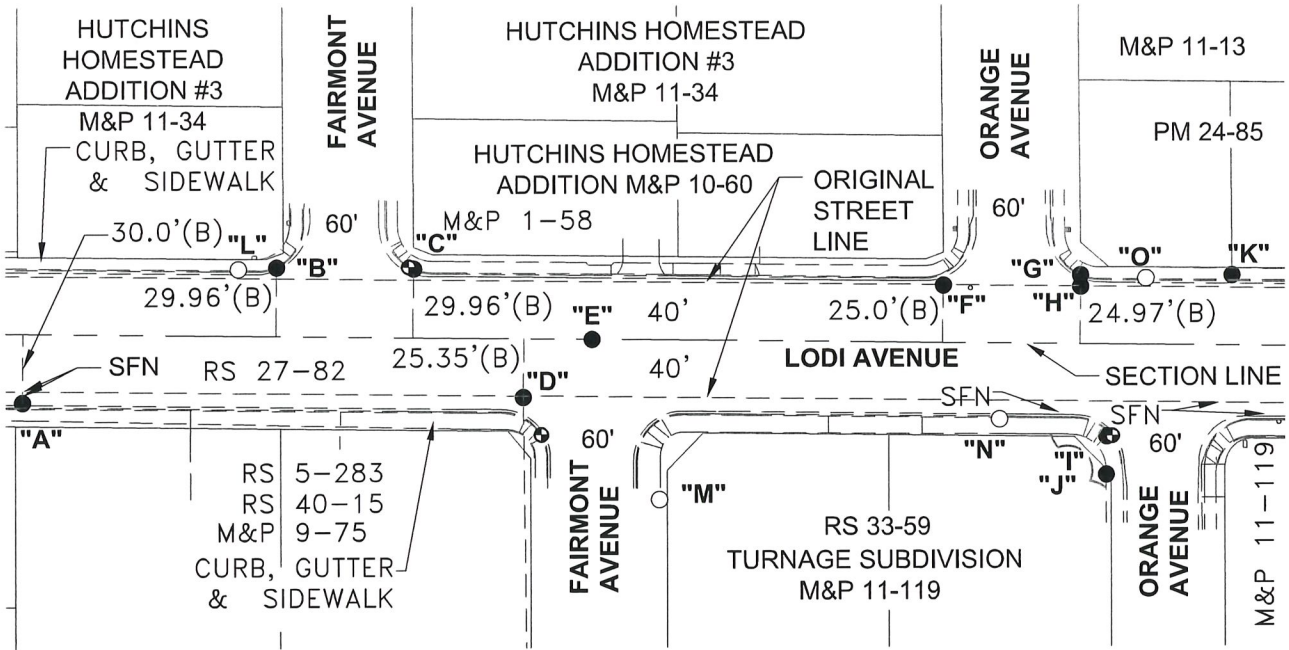
COUNTY SURVEYOR'S STATEMENT

This Corner Record was received June 17, 2021 and examined and filed July 6, 2021

Signed James E. Hart P.L.S. or R.C.E. No. 8657
Title County Surveyor

County Surveyor's Comment





DISTANCE (M) TABLE

	FD. MONUMENT	FROM	DISTANCE	FROM2	DISTANCE2	FROM3	DISTANCE3	FROM4	DISTANCE4
"A"	BOLT & WSHR, (B), NT	"L"	110.57'	"M"	282.02'	"N"	427.52'	"O"	494.48'
"B"	CHISELED "+", (B), NT	"L"	16.77'	"M"	196.00'	"N"	323.41'	"O"	380.68'
"C"	CHISELED "+", (B), NT	"L"	76.85'	"M"	147.39'	"N"	264.72'	"O"	320.58'
"D"	BOLT & WSHR, (B), NT	"L"	136.68'	"M"	74.65'	"N"	208.68'	"O"	277.35'
"E"	BOLT, (B), NT, NW	"L"	157.92'	"M"	75.75'	"N"	181.75'	"O"	243.91'
"F"	BOLT, BENT, (B), NT	"L"	308.83'	"M"	155.13'	"N"	63.22'	"O"	88.70'
"G"	CHISELED "+", (C), NT	"L"	368.74'	"M"	208.30'	"N"	71.97'	"O"	28.71'
"H"	BOLT, (C), NT, NW	"L"	368.85'	"M"	206.03'	"N"	67.67'	"O"	28.85'
"I"	CHISELED "+", (A), NT	"L"	387.03'	"M"	197.37'	"N"	47.40'	"O"	70.76'
"J"	CHISELED "+", (A), NT	"L"	390.40'	"M"	195.75'	"N"	52.44'	"O"	86.64'
"K"	CHISELED "+", (C), NT	"L"	435.22'	"M"	268.81'	"N"	119.57'	"O"	37.83'

LEGEND

- FOUND MONUMENT AS NOTED
- SET NAIL & WASHER STAMPED "C.O.L. LS 9478"
- ⊕ FOUND CITY OF LODI BENCHMARK (TO BE RESET BY CITY IF DESTROYED)
- FD. FOUND ON THIS SURVEY
- M&P MAPS & PLATS, VOLUME AND PAGE, S.J.C.R.
- RS RECORD OF SURVEY, BOOK AND PAGE, S.J.C.R.
- PM PARCEL MAP, BOOK AND PAGE, S.J.C.R.
- S.J.C.R. SAN JOAQUIN COUNTY RECORDS
- (M) MEASURED ON THIS SURVEY
- WSHR WASHER
- NT, NR, NW NO TAG, NO RECORD, NO WASHER (AS NOTED)
- SFN SEARCHED, FOUND NOTHING

REFERENCES

- (A) RS 33-59
- (B) RS 27-82
- (C) PM 24-85



SCALE: 1"=80'

021A004.DWG