

CORNER RECORD

Agency Index CR-21-102

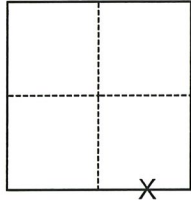
Document Number _____

City of Lodi County of San Joaquin, California

Brief Legal Description Property monuments at Lodi Avenue near Crescent Avenue & Avena Avenue

CORNER TYPE

COORDINATES (Optional)



- Government Corner
- Meander
- Rancho
- Control
- Property
- Other

Date of Survey February 10, 2021

N. _____ E. _____

Elevation _____

Units Metric U.S. Survey Foot

Horizontal Datum _____

Zone _____ Epoch Date _____

Vertical Datum _____

Complies with Public Resources Code §§8801-8819

Complies with Public Resources Code §§8890-8902

Section 2, T.3N., R.6E.
M.D.B.&M.

PLS Act Ref.: 8765(d) 8771 8773 Other:

Corner/Monument: Left as found Established Rebuilt Pre-Construction

Found and tagged Reestablished Referenced Post-Construction

Narrative of corner identified and monument as found, set, reset, replaced, or removed:

See sheet #2 for description(s):

FOUND REFERENCED MONUMENTS ON LOT LINE PROJECTIONS PER RS 27-44, RS 27-82, PM 24-85 AND RS 38-134. NO BOUNDARY ANALYSIS WAS PERFORMED.

SURVEYOR'S STATEMENT

This Corner Record was prepared by me or under my direction in conformance with

the Professional Land Surveyors' Act on June 14, 2021

Signed [Signature] P.L.S. or R.C.E. No. 9478



COUNTY SURVEYOR'S STATEMENT

This Corner Record was received June 17, 2021

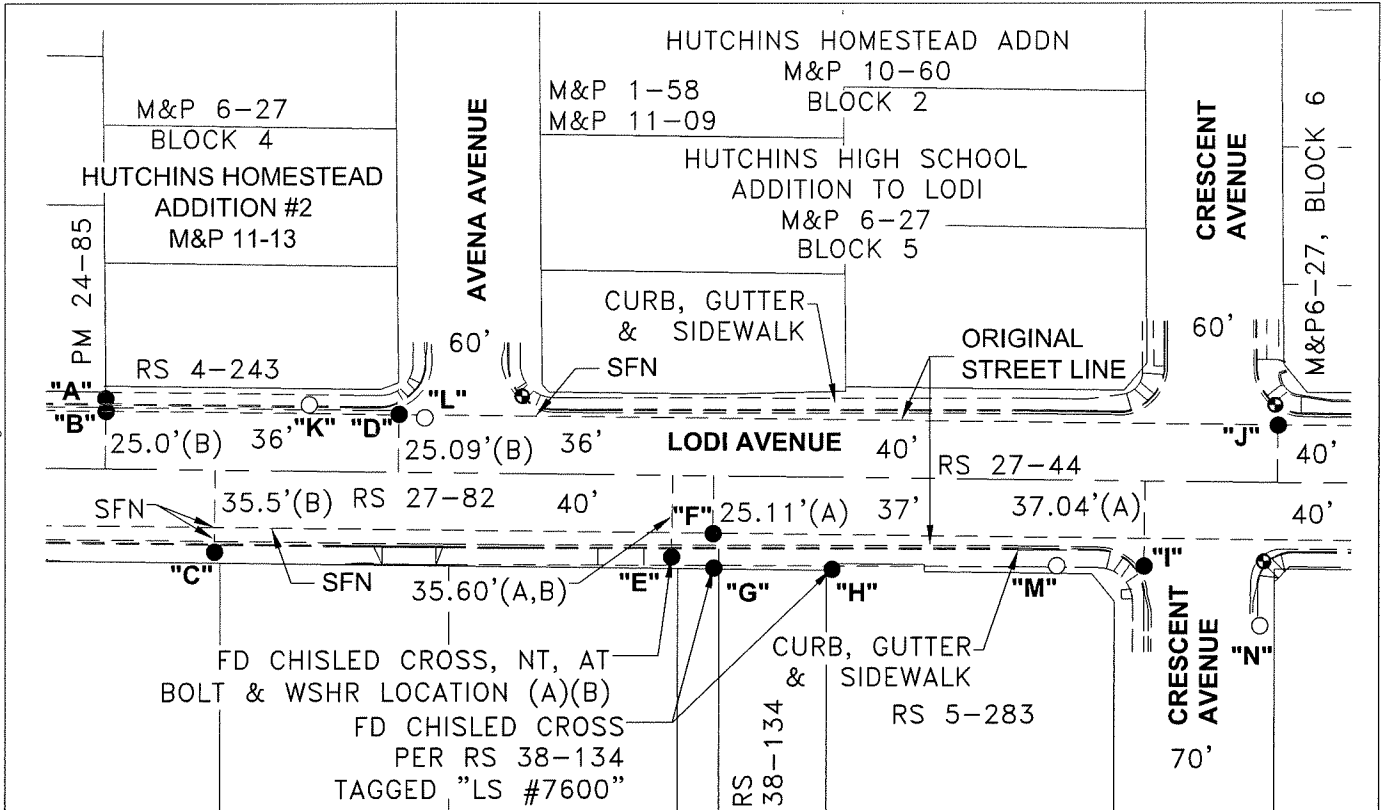
and examined and filed July 6, 2021

Signed James E. Hart P.L.S. or R.C.E. No. 8657

Title County Surveyor

County Surveyor's Comment





DISTANCE (M) TABLE

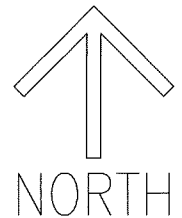
FD	MONUMENT	FROM1	DIST1	FROM2	DIST2	FROM3	DIST3	FROM4	DIST4
"A"	CHISELED "+", (C), NT	"K"	88.97'	"L"	139.68'	"M"	422.51'	"N"	514.86'
"B"	BOLT & WSHR, (B), NT	"K"	88.52'	"L"	138.89'	"M"	420.48'	"N"	512.61'
"C"	CHISELED "+", (B), NT	"K"	76.28'	"L"	108.79'	"M"	368.07'	"N"	458.12'
"D"	BOLT & WSHR, (B), NT, BENT	"K"	39.35'	"L"	11.36'	"M"	294.94'	"N"	387.54'
"E"	CHISELED "+", SEE ABOVE	"K"	171.72'	"L"	123.86'	"M"	168.24'	"N"	258.90'
"F"	BOLT & WSHR, (A), NT	"K"	185.14'	"L"	135.76'	"M"	150.82'	"N"	242.48'
"G"	CHISELED "+", SEE ABOVE	"K"	190.48'	"L"	142.23'	"M"	149.83'	"N"	240.14'
"H"	CHISELED "+", SEE ABOVE	"K"	239.25'	"L"	189.71'	"M"	98.28'	"N"	188.87'
"I"	BOLT, (A), NT, NW	"K"	371.47'	"L"	320.94'	"M"	38.17'	"N"	57.07'
"J"	BOLT, (A), NT, NW	"K"	423.57'	"L"	373.10'	"M"	114.57'	"N"	87.68'

LEGEND

- FOUND MONUMENT AS NOTED
- SET NAIL & WASHER STAMPED "C.O.L. LS 9478"
- ◐ FOUND CITY OF LODI BENCHMARK (TO BE RESET BY CITY IF DESTROYED)
- FD FOUND ON THIS SURVEY
- DIST1 DISTANCE 1
- WASHR WASHER
- M&P MAPS & PLATS, VOLUME AND PAGE, S.J.C.R.
- RS RECORD OF SURVEY, BOOK AND PAGE, S.J.C.R.
- PM PARCEL MAP, BOOK AND PAGE, S.J.C.R.
- S.J.C.R. SAN JOAQUIN COUNTY RECORDS
- (M) MEASURED ON THIS SURVEY
- NT, NR, NW NO TAG, NO RECORD, NO WASHER (AS NOTED)
- SFN SEARCHED, FOUND NOTHING

REFERENCES

- (A) RS 27-44
- (B) RS 27-82
- (C) PM 24-85



SCALE: 1"=80'

021A004.DWG