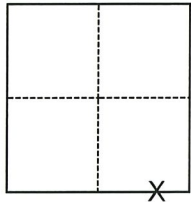


CORNER RECORD

Agency Index CR-21-101
Document Number _____

City of Lodi County of San Joaquin, California
Brief Legal Description Property monuments at Lodi Avenue near Rose Street



Section 2, T.3N., R.6E.
M.D.B.&M.

CORNER TYPE

- Government Corner
- Meander
- Rancho
- Control
- Property
- Other

Date of Survey February 10, 2021

COORDINATES (Optional)

- N. _____ E. _____
Elevation _____
Units Metric U.S. Survey Foot
Horizontal Datum _____
Zone _____ Epoch Date _____
Vertical Datum _____
 Complies with Public Resources Code §§8801-8819
 Complies with Public Resources Code §§8890-8902

- PLS Act Ref.: 8765(d) 8771 8773 Other:
Corner/Monument: Left as found Established Rebuilt Pre-Construction
 Found and tagged Reestablished Referenced Post-Construction

Narrative of corner identified and monument as found, set, reset, replaced, or removed:

See sheet #2 for description(s):

FOUND BOLT (MISSING WASHER) AND 2 BOLT AND WASHERS PER RS 27-44, NO TAGS; AND BENT BOLT NEAR LOT LINE PROJECTIONS PER M&P 1-58. NO BOUNDARY ANALYSIS WAS PERFORMED.

SURVEYOR'S STATEMENT

This Corner Record was prepared by me or under my direction in conformance with the Professional Land Surveyors' Act on June 14, 2021.

Signed [Signature] P.L.S. or R.C.E. No. 9478



COUNTY SURVEYOR'S STATEMENT

This Corner Record was received June 17, 2021

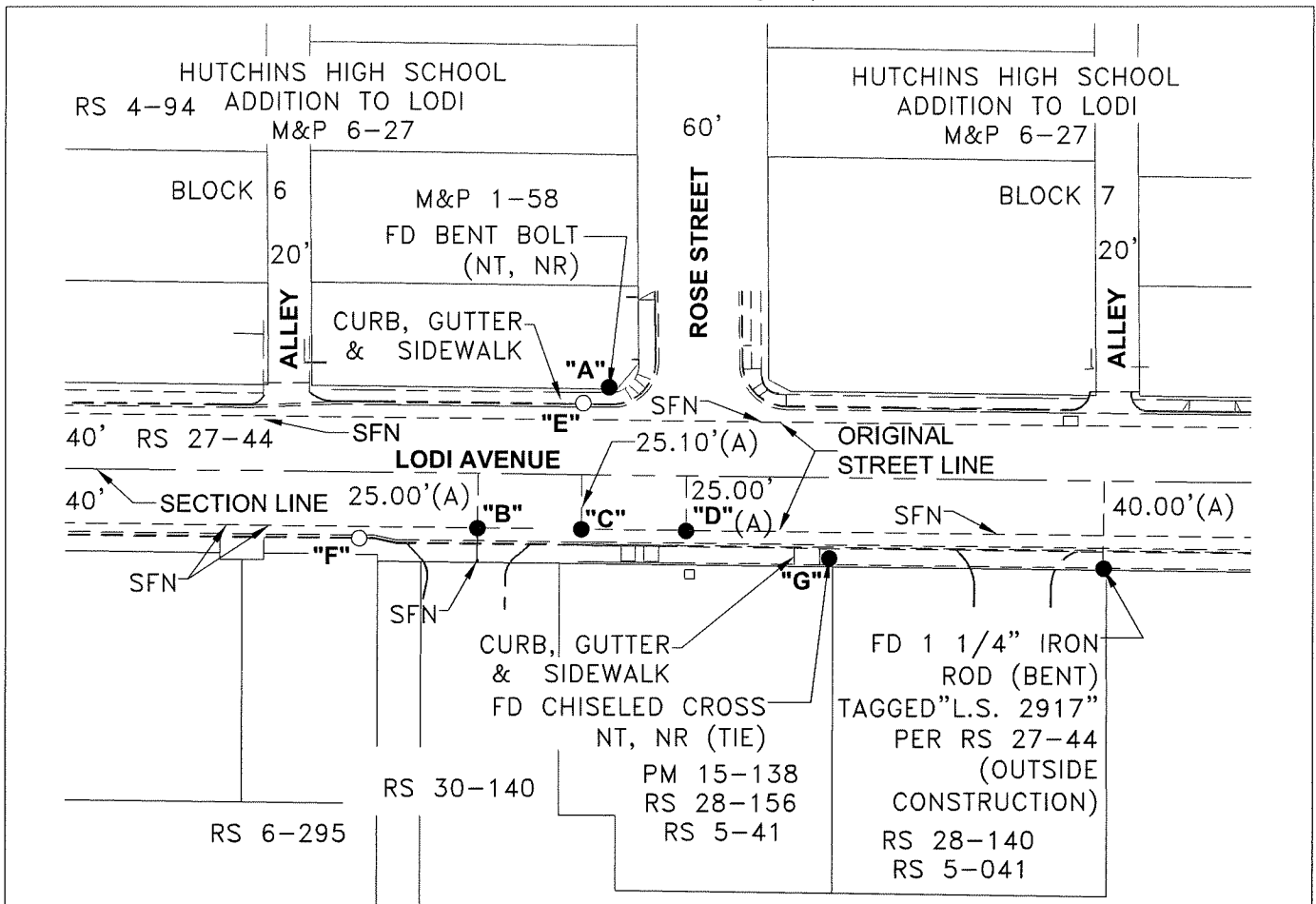
and examined and filed July 6, 2021.

Signed James E. Hart P.L.S. or R.C.E. No. 8657

Title County Surveyor

County Surveyor's Comment





DISTANCE (M) TABLE							
FD. MONUMENT	FROM	DISTANCE	FROM	DISTANCE	FROM	DISTANCE	
"A"	SEE MAP ABOVE	"E"	13.80'	"F"	133.72'	"G"	128.11'
"B"	BOLT & WASHER, (A), NT	"E"	74.83'	"F"	54.63'	"G"	162.19'
"C"	BOLT, NO WASHER, (A), NT	"E"	57.72'	"F"	102.12'	"G"	114.76'
"D"	BOLT & WASHER, (A), NT	"E"	75.00'	"F"	150.07'	"G"	67.21'

LEGEND

- FOUND MONUMENT AS NOTED
- SET NAIL & WASHER STAMPED "C.O.L. LS 9478"
- ◐ FOUND CITY OF LODI BENCHMARK (TO BE RESET BY CITY IF DESTROYED)
- FD FOUND ON THIS SURVEY
- M&P MAPS & PLATS, VOLUME AND PAGE, S.J.C.R.
- RS RECORD OF SURVEY, BOOK AND PAGE, S.J.C.R.
- PM PARCEL MAP, BOOK AND PAGE, S.J.C.R.
- S.J.C.R. SAN JOAQUIN COUNTY RECORDS
- (M) MEASURED ON THIS SURVEY
- (NT, NR) NO TAG, NO RECORD (AS NOTED)
- SFN SEARCHED, FOUND NOTHING

REFERENCE

(A) RS 27-44



SCALE: 1"=80'

021A004.DWG