

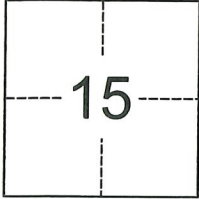
CORNER RECORD

Agency Index CR-21-095

Document Number _____

City of Lodi County of San Joaquin, California

Brief Legal Description _____ M.P. 43-141

CORNER TYPE**COORDINATES (Optional)**

Government Corner Control
 Meander Property
 Rancho Other

N. _____ E. _____

Elevation _____

Units Metric U.S. Survey Foot

Horizontal Datum _____

Zone _____ Epoch Date _____

Date of Survey April 13, 2021

Vertical Datum _____

T.3N., R.6E., M.D.B. & M.

 Complies with Public Resources Code §§8801-8819 Complies with Public Resources Code §§8890-8902PLS Act Ref.: 8765(d) 8771 8773 Other:Corner/Monument: Left as found Established Rebuilt Pre-Construction Found and tagged Reestablished Referenced Post-Construction

Narrative of corner identified and monument as found, set, reset, replaced, or removed:

 See sheet #2 for description(s):

It is the purpose of this corner record to establish monuments per M.P. 43-141 that were found missing after construction.

SURVEYOR'S STATEMENT

This Corner Record was prepared by me or under my direction in conformance with

the Professional Land Surveyors' Act on April 27, 2021Signed [Signature] P.L.S. or R.C.E. No. 7889**COUNTY SURVEYOR'S STATEMENT**This Corner Record was received June 21, 2021and examined and filed July 6, 2021Signed James E. Hart P.L.S. or R.C.E. No. 8657Title County Surveyor

County Surveyor's Comment



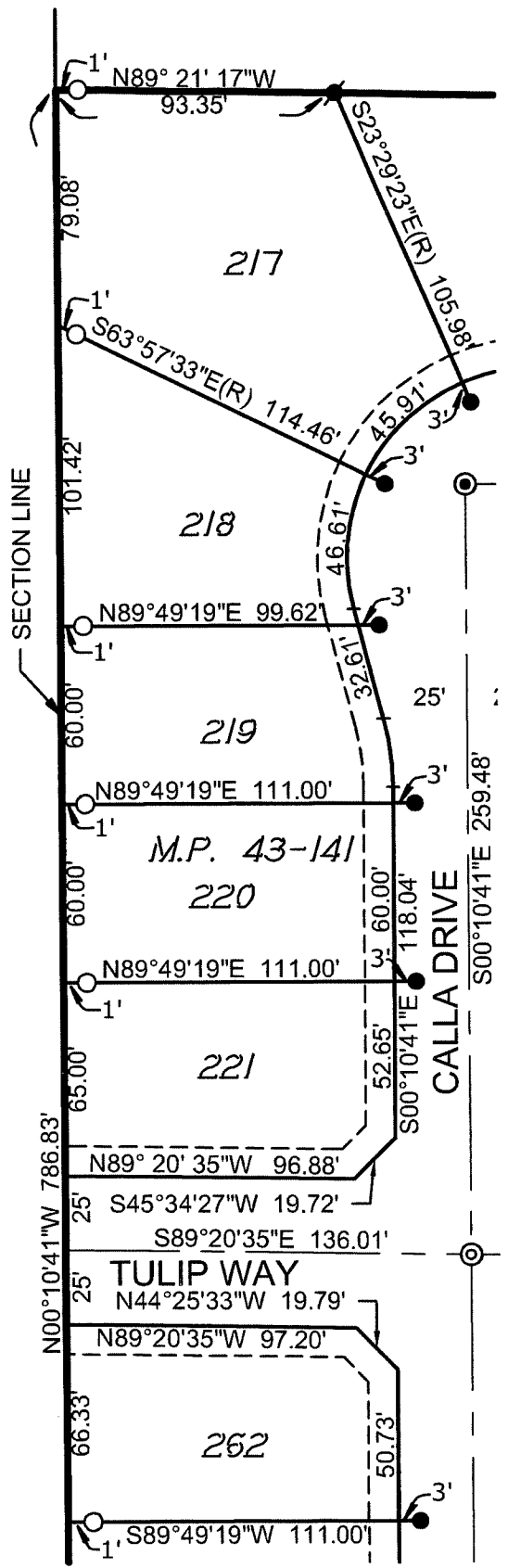
S:\Projects\2015\15045-05\3_Drawing\15045-05_CR.dwg 06/16/21 4:05pm - ELSON - XREFS: 16x20_T4-ES-PLUMB 06d1.dwg

LEGEND:

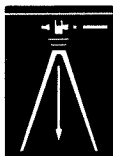
- FOUND 3/4" IRON ROD, CAPPED AND STAMPED "BAUMBACH & PIAZZA ELSON PLS 7889" PER M.P. 43-141
- FOUND 1.25" DIAMETER BRASS DISK STAMPED "SURVEY LS 7889 PER M.P. 43-141
- SET 3/4"x30" IRON ROD, CAPPED AND STAMPED "BAUMBACH & PIAZZA ELSON PLS 7889"
- ⊙ FOUND 3/4" IRON ROD CAPPED & STAMPED "BAUMBACH & PIAZZA ELSON PLS 7889" IN MONUMENT BOX PER M.P. 43-141
- ⊙ SET MAG NAIL

M.P. MAPS AND PLATS, SAN JOAQUIN COUNTY RECORDS

DISTANCES ALONG LOT LINES THAT CONTAIN A WITNESS CORNER ARE FROM LOT CORNER TO LOT CORNER



PREPARED IN THE OFFICE OF:



BAUMBACH & PIAZZA, INC.
 CIVIL ENGINEERS • SURVEYORS
 www.bpengineers.net
 209.368.6618
 323 W. Elm St.
 Lodi, CA 95240