

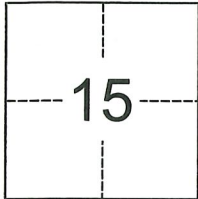
CORNER RECORD

Agency Index CR-21-093
Document Number _____

City of Lodi County of San Joaquin, California
Brief Legal Description _____ M.P. 43-141

CORNER TYPE

COORDINATES (Optional)



Government Corner Control
Meander Property
Rancho Other

N. _____ E. _____
Elevation _____
Units Metric U.S. Survey Foot
Horizontal Datum _____
Zone _____ Epoch Date _____
Vertical Datum _____

Date of Survey April 13, 2021

T.3N., R.6E., M.D.B. & M.

Complies with Public Resources Code §§8801-8819
 Complies with Public Resources Code §§8890-8902

PLS Act Ref.: 8765(d) 8771 8773 Other:
Corner/Monument: Left as found Established Rebuilt Pre-Construction
 Found and tagged Reestablished Referenced Post-Construction

Narrative of corner identified and monument as found, set, reset, replaced, or removed:
 See sheet #2 for description(s):

It is the purpose of this corner record to establish monuments per M.P. 43-141 that were found missing after construction.

SURVEYOR'S STATEMENT

This Corner Record was prepared by me or under my direction in conformance with
the Professional Land Surveyors' Act on April 27, 2021
Signed [Signature] P.L.S. or R.C.E. No. 7889



COUNTY SURVEYOR'S STATEMENT

This Corner Record was received June 21, 2021
and examined and filed July 6, 2021
Signed James E. Hart P.L.S. or R.C.E. No. 8657
Title County Surveyor



County Surveyor's Comment

LEGEND:

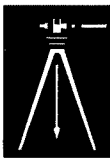
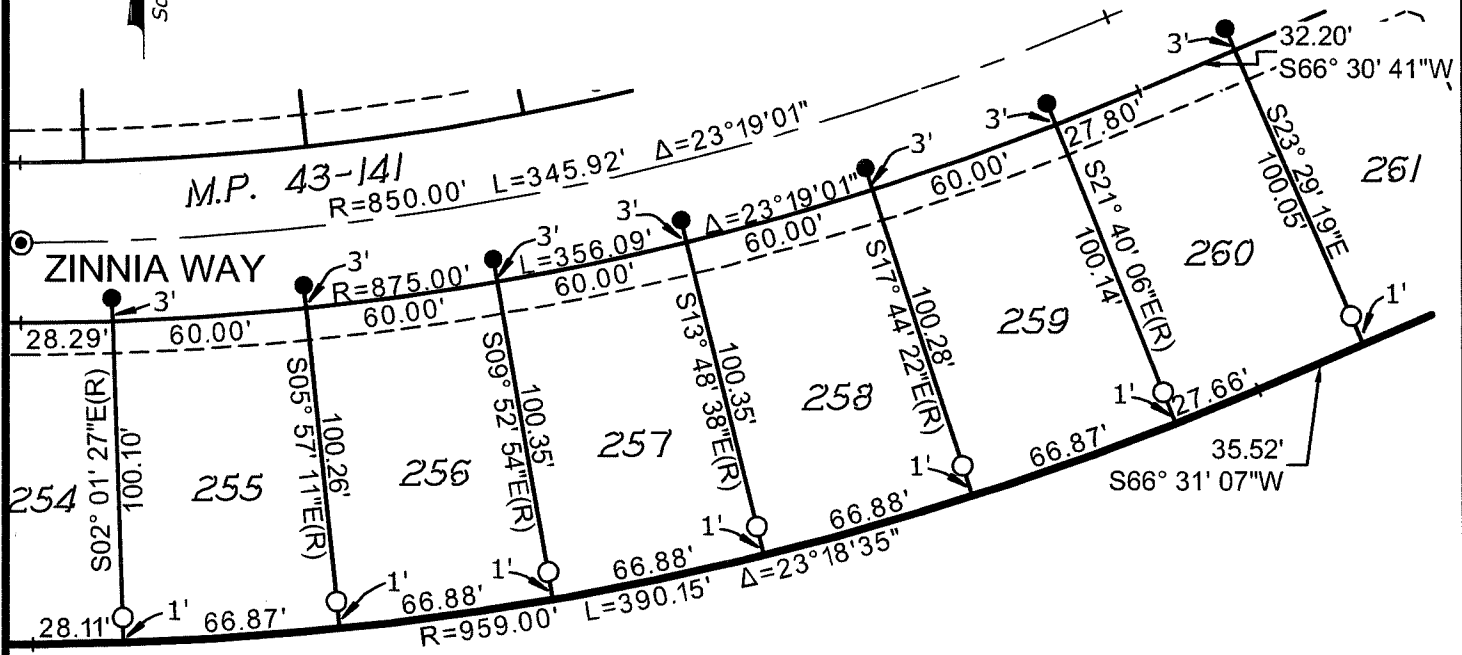
- FOUND 1.25" DIAMETER BRASS DISK STAMPED "SURVEY LS 7889 PER M.P. 43-141"
 - SET 3/4"x30" IRON ROD, CAPPED AND STAMPED "BAUMBACH & PIAZZA ELSON PLS 7889"
 - ⊙ FOUND 3/4" IRON ROD CAPPED & STAMPED "BAUMBACH & PIAZZA ELSON PLS 7889" IN MONUMENT BOX PER M.P. 43-141
- M.P. MAPS AND PLATS, SAN JOAQUIN COUNTY RECORDS

DISTANCES ALONG LOT LINES THAT CONTAIN A WITNESS CORNER ARE FROM LOT CORNER TO LOT CORNER



Scale: 1" = 60'

S:\Projects\2016\16048-06\3_Drawing\16048-06_Cor.dwg 05/24/21 05:51am-ELSON-XXXX-1628_P1-25-PL.DWG 06x11 bp.dwg



PREPARED IN THE OFFICE OF:
BAUMBACH & PIAZZA, INC.
 CIVIL ENGINEERS • SURVEYORS
 www.bpengineers.net
 209.368.6618
 323 W. Elm St.
 Lodi, CA 95240