

# CORNER RECORD

Agency Index CR-21-091

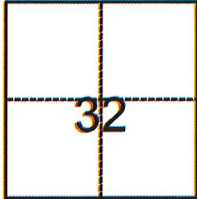
Document Number \_\_\_\_\_

City of Stockton County of San Joaquin, California

Brief Legal Description Lots 19, 20, 21, 22, 23, & 24 of Block 10 of M&P 1-39

### CORNER TYPE

### COORDINATES (Optional)



- Government Corner     Control  
 Meander                     Property  
 Rancho                         Other

N. \_\_\_\_\_ E. \_\_\_\_\_

Elevation \_\_\_\_\_

Units  Metric  U.S. Survey Foot

Horizontal Datum \_\_\_\_\_

Zone \_\_\_\_\_ Epoch Date \_\_\_\_\_

Vertical Datum \_\_\_\_\_

Complies with Public Resources Code §§8801-8819

Complies with Public Resources Code §§8890-8902

Date of Survey February 3, 2021

**C.M. WEBER GRANT**

PLS Act Ref.:  8765(d)     8771     8773     Other:

Corner/ Monument:  Left as found     Established     Rebuilt     Pre-Construction

Found and tagged     Reestablished     Referenced     Post-Construction

Narrative of corner identified and monument as found, set, reset, replaced, or removed:

See sheet #2 for description(s):

The record distances from R.S. 33-145, San Joaquin County Records, matched measured distances and were used to determine the dimensions of Block 10 as shown on said map. Field locations of the Improvement splits(face of curb to face of curb) also matched the centerline locations shown on said map being 40', 30' and 20' for the right of ways along the surrounding roads where applicable.

### SURVEYOR'S STATEMENT

This Corner Record was prepared by me or under my direction in conformance with

the Professional Land Surveyors' Act on June 14, 2021

Signed [Signature] P.L.S. or R.C.E. No. L.S. 7269



### COUNTY SURVEYOR'S STATEMENT

This Corner Record was received June 15, 2021

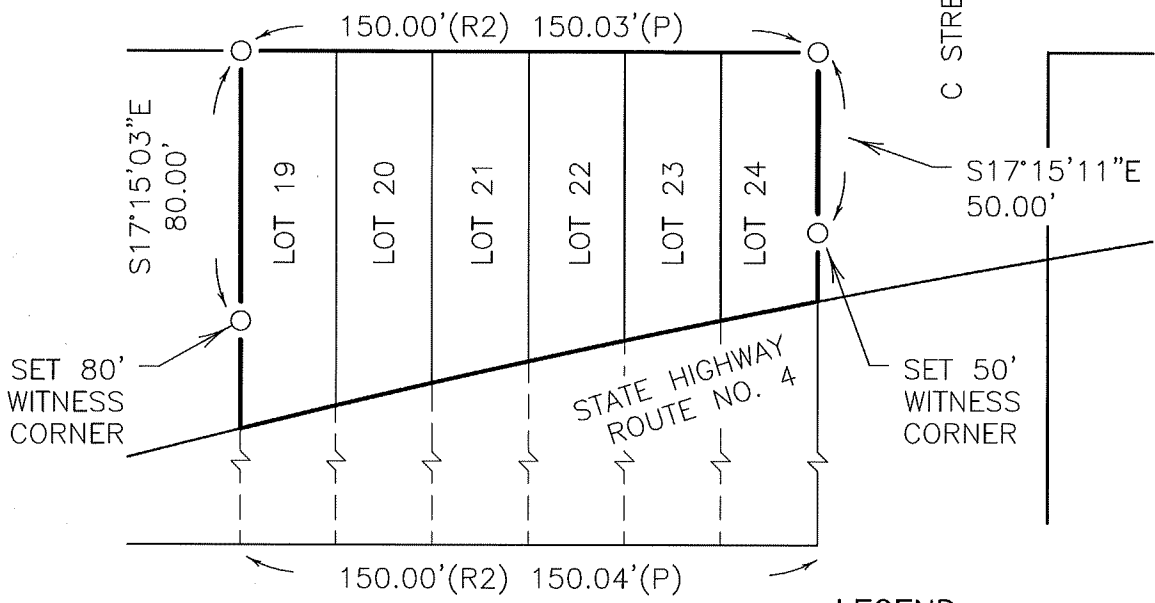
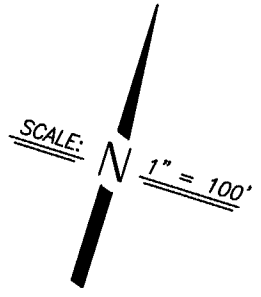
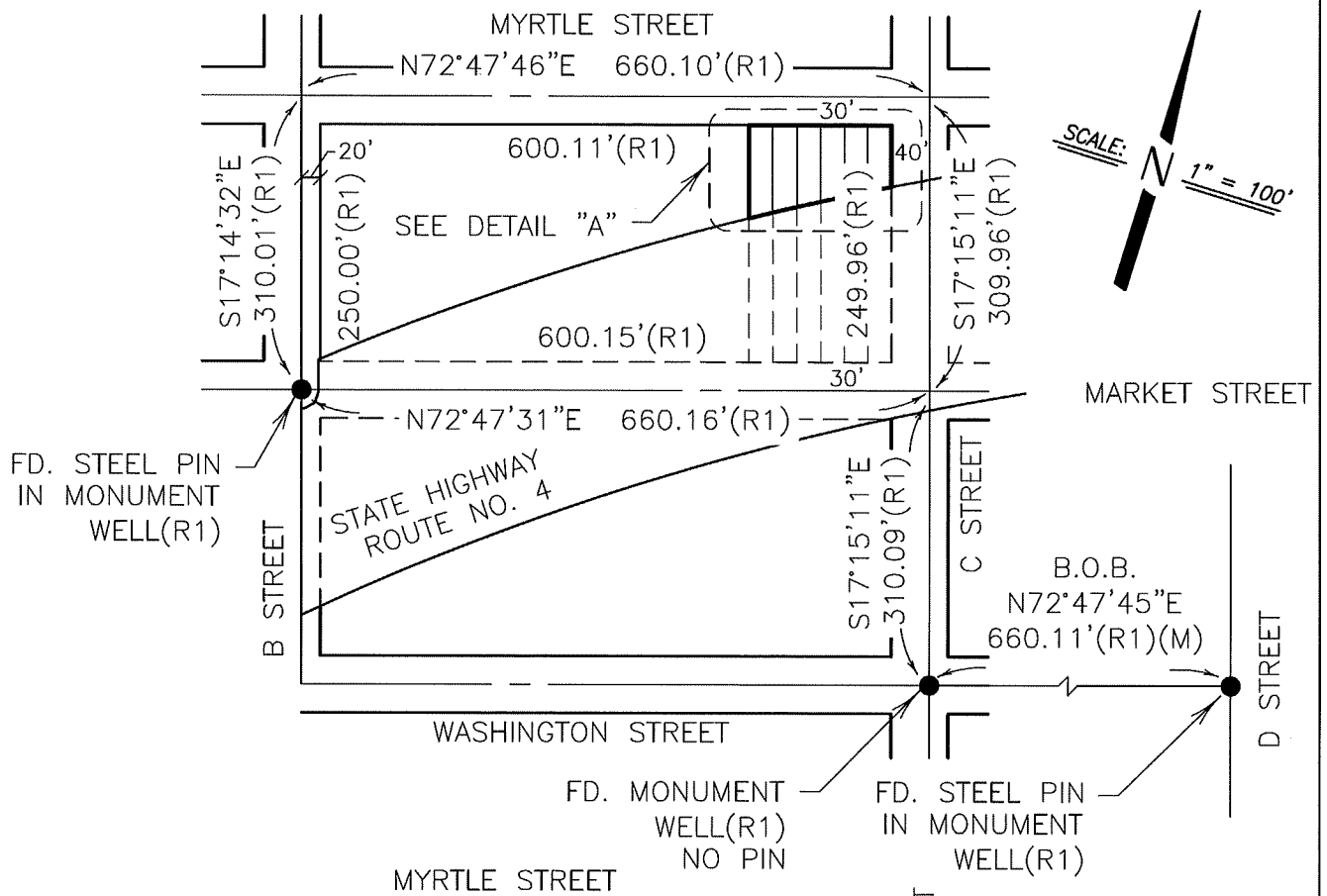
and examined and filed June 24, 2021

Signed James E. Hart P.L.S. or R.C.E. No. 8657

Title County Surveyor

County Surveyor's Comment \_\_\_\_\_





**DETAIL "A"**  
NOT TO SCALE

**LEGEND**

- (R1) R.S. 33-145, S.J.C.R.
- (R2) M&P 1-39, S.J.C.R.
- S.J.C.R. SAN JOAQUIN COUNTY RECORDS
- FOUND MONUMENT AS NOTED
- SET 3/4" X 30" IRON ROD, CAPPED L.S. 7269
- B.O.B. BASIS OF BEARINGS
- M.&P. MAPS AND PLATS
- R.S. RECORD OF SURVEY